

AMP SERVICE SINGLE PHASE 3/PHASE

SIZE	DESCRIPTION	BREAKER NUMBERS	DESCRIPTION	SIZE
14	LIGHTING	1 2	LIGHTING	14 14
14	LIGHTING	3 4	LIGHTING	14 14
14	LIGHTING	5 6	LIGHTING	14 14
		7 8		
		9 10		
		11 12		

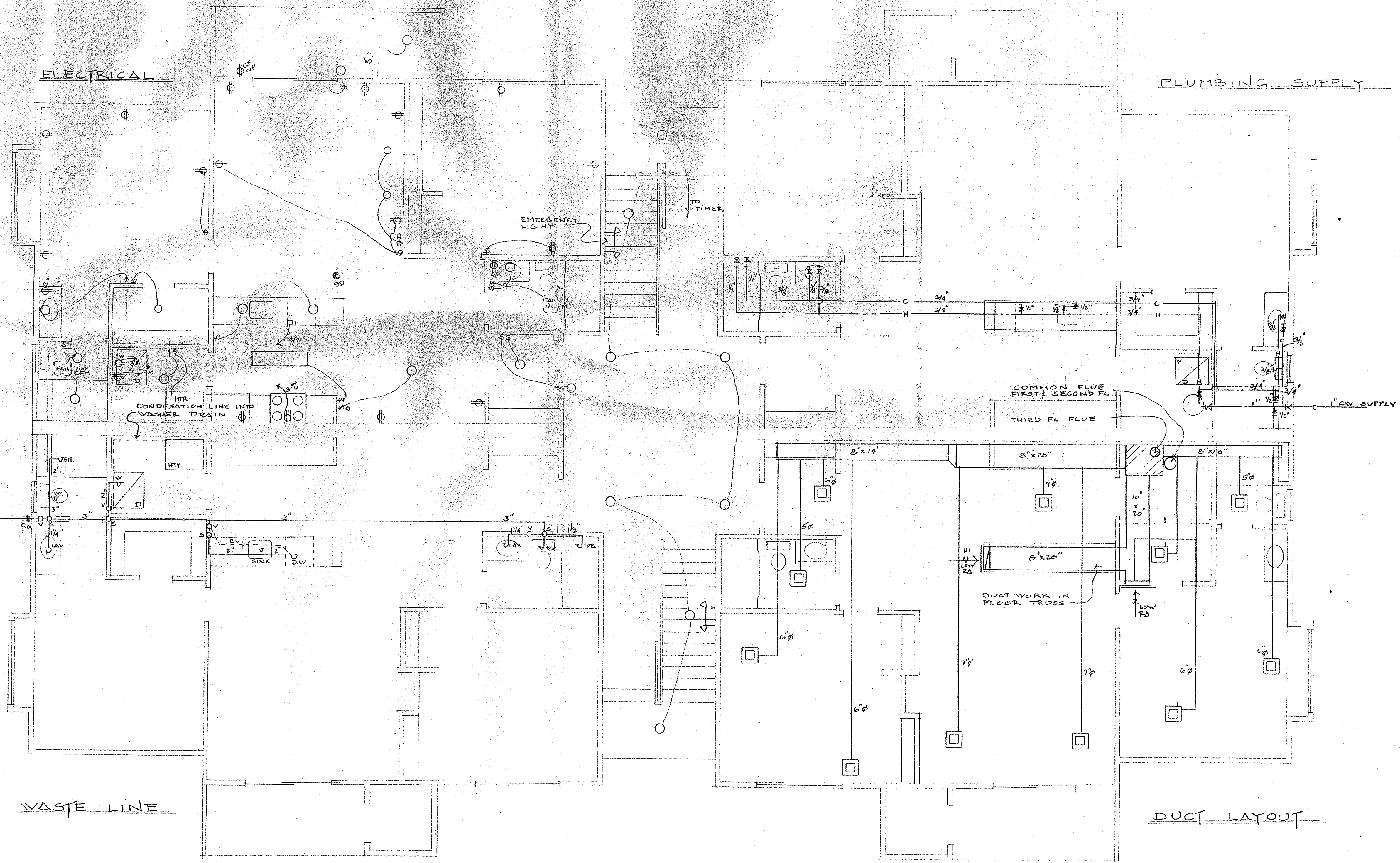
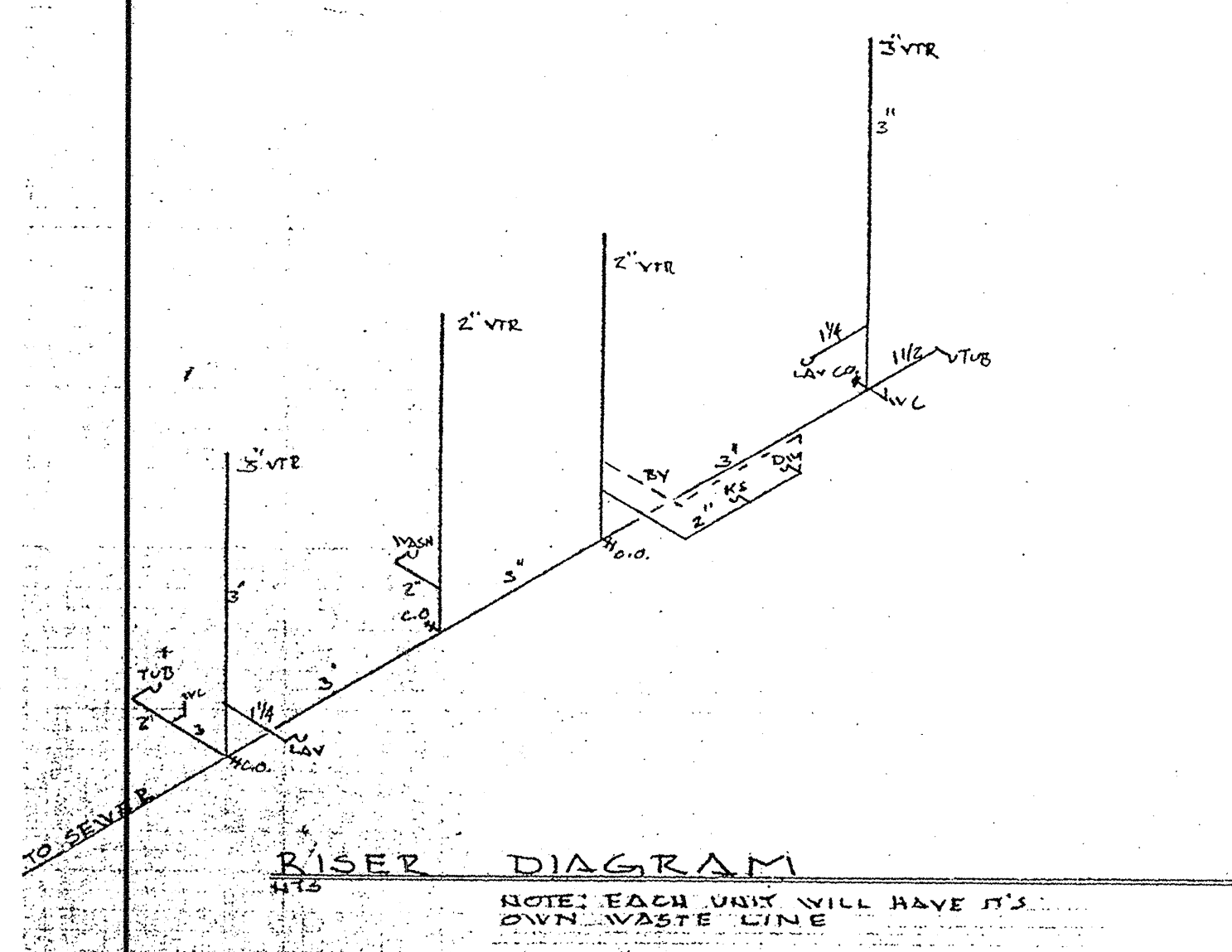
**ELECTRICAL PANEL (HOUSE PER BUILD'G)**  
 NOTE: ELECTRICAL CONTRACTOR SHALL DATE METER GROUND POLE & PANEL. CONNECTIONS SHOWN ON DRAWING ARE SUGGESTED AREA'S.

AMP SERVICE SINGLE PHASE 3/PHASE

SIZE	DESCRIPTION	BREAKER NUMBERS	DESCRIPTION	SIZE
4	RANGE	1 2	AIR COND	4 8
10	DRYER	3 4	HEATER	20 12
		5 6	RECP.	20 12
12	WASHER	7 8		
12	KIT RECP	9 10		
12	KIT RECP	11 12		
12	LIGHTS	13 14		
12	LIGHTS	15 16	RECP	20 12
12	LIGHTS	17 18	GFI	20 12
12	LIGHTS	19 20	SMOKE DET	15 14
		21 22		
		23 24		

**ELECTRICAL PANEL (TYPICAL UNIT)**  
 NOTE: ELECTRICAL CONTRACTOR SHALL DATE METER GROUND POLE & PANEL. CONNECTIONS SHOWN ON DRAWING ARE SUGGESTED AREA'S.

- HEATING & AIR COND. NOTES**
- FIRST & SECOND FLOOR UNIT  
 0 60,000 BTU GAS HOT AIR UNIT  
 W/ COMMON PREFAB FLUE  
 0 2 TON ELECTRIC AIR COND.
  - THIRD FLOOR UNIT  
 0 60,000 BTU GAS HOT AIR UNIT  
 W/ IT'S OWN PREFAB FLUE  
 0 2 1/2 TON ELECTRIC AIR COND.
  - INSULATE ALL DUCT WORK (R-7 MIN)



**MECHANICAL PLAN**  
 SCALE: 1/4" = 1'-0"

**SASEEN & HARPER**  
 ARCHITECTS  
 A PROFESSIONAL ASSOCIATION  
 100 MAIN STREET  
 PLEASANTVILLE, N.J.  
 PHONE: (609) 426-7448  
 FAX: (609) 426-7448

---

**THE ORCHARDS**  
 PLEASANTVILLE, NEW JERSEY

---

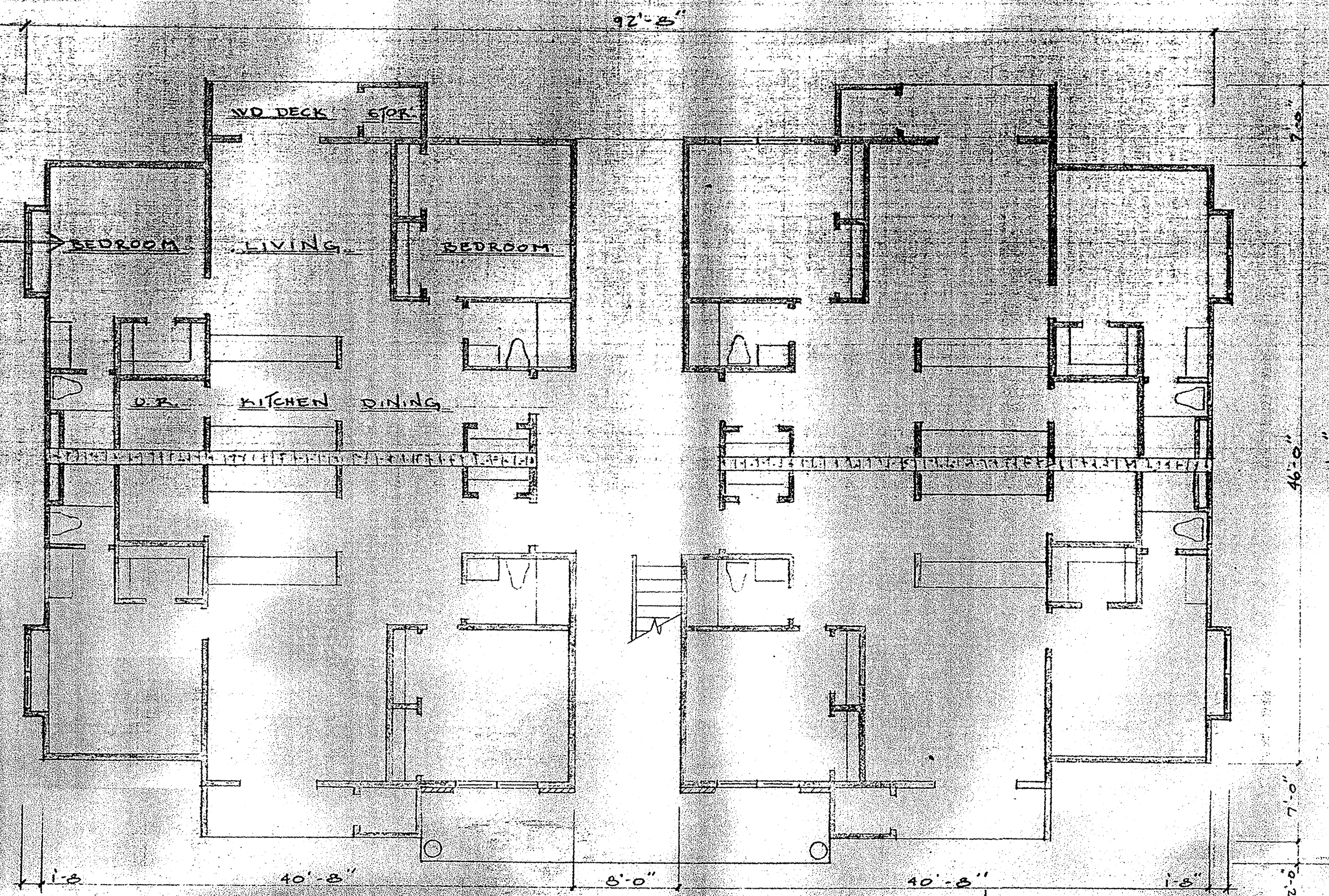
REVISIONS

---

COMM. NO. 3434  
 DRAWN BY [Signature]

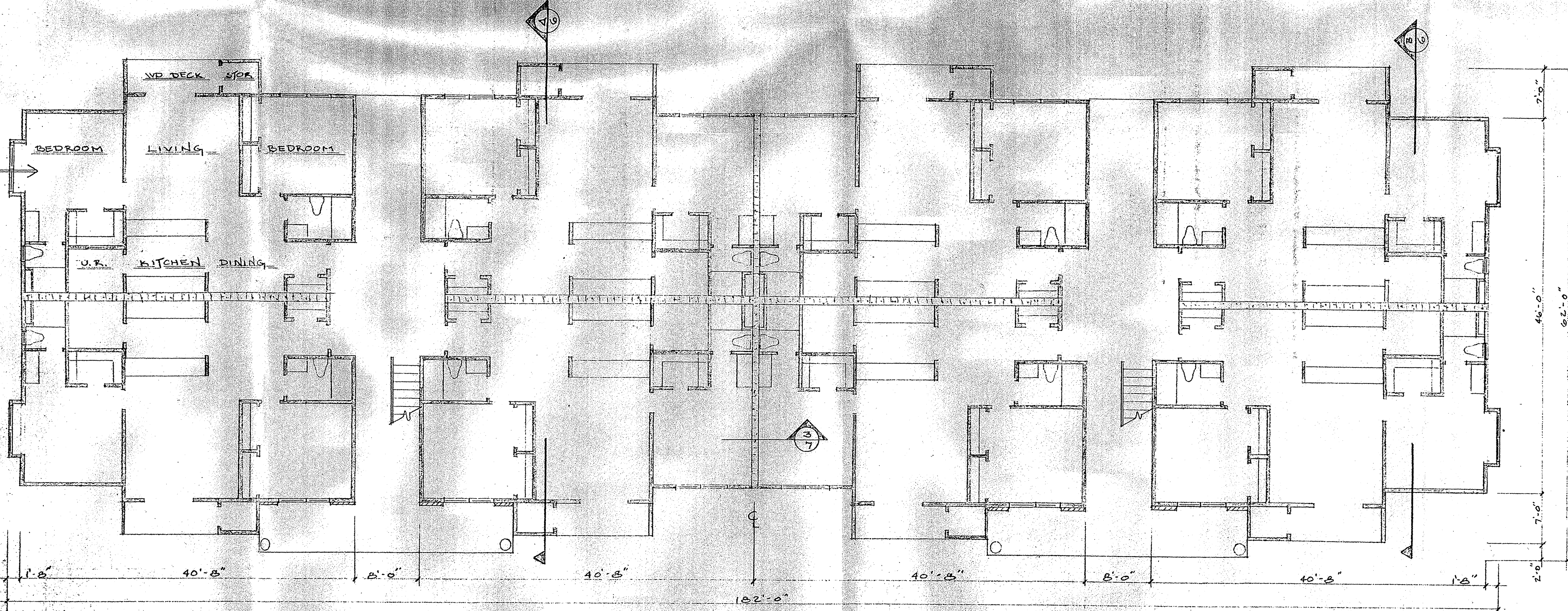


TYPICAL UNIT



TYPICAL FLOOR PLAN 1ST, 2ND & 3RD FLOORS  
SCALE: 1/8" = 1'-0"  
BUILDING "A"

TYPICAL UNIT



TYPICAL FLOOR PLAN 1ST, 2ND & 3RD FLOORS  
SCALE: 1/8" = 1'-0"  
BUILDING "B"

EXTERIOR UNIT =  
INTERIOR UNIT =

THE ORCHARDS  
 PLEASANTVILLE, NEW JERSEY  
 HARRY S. HARPER, JR.  
 ARCHITECT  
 925 N. MAIN STREET  
 PLEASANTVILLE, N. J.  
 PHONE: (800) 847-7588  
 N.J.P.P. LT 03272

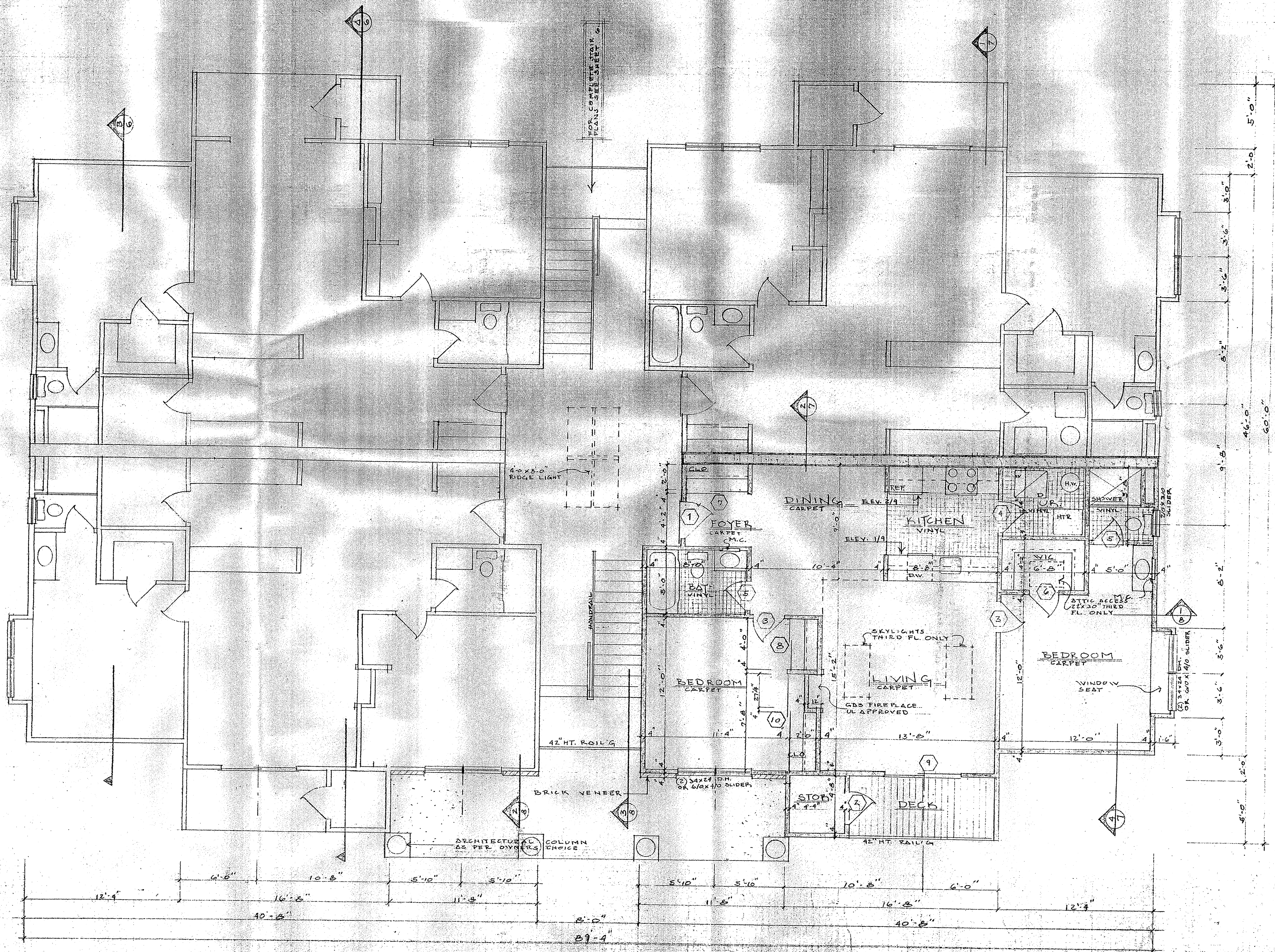
SASEEN & HARPER  
 ARCHITECTS  
 A PROFESSIONAL ASSOCIATION  
 HARRY S. HARPER, JR.  
 ARCHITECT  
 925 N. MAIN STREET  
 PLEASANTVILLE, N. J.  
 PHONE: (800) 847-7588  
 N.J.P.P. LT 03272

COM. NO. 2484  
 DRAWN BY: AEA  
 CHKD. BY: ASS  
 DATE: 12-14-85

SHEET NO. 1 of 1

REVISIONS





TYPICAL FLOOR PLAN

**SASEEN & HARPER**  
 ARCHITECTS  
 928 N. MAIN STREET  
 PLEASANTVILLE, N.J. 07058  
 PHONE: (609) 645-7558  
 FAX: (609) 645-7559  
 HARRY S. HARPER, JR.  
 A PROFESSIONAL ASSOCIATION  
 N.J. REG. NO. 120016  
 FL. REG. NO. 110222

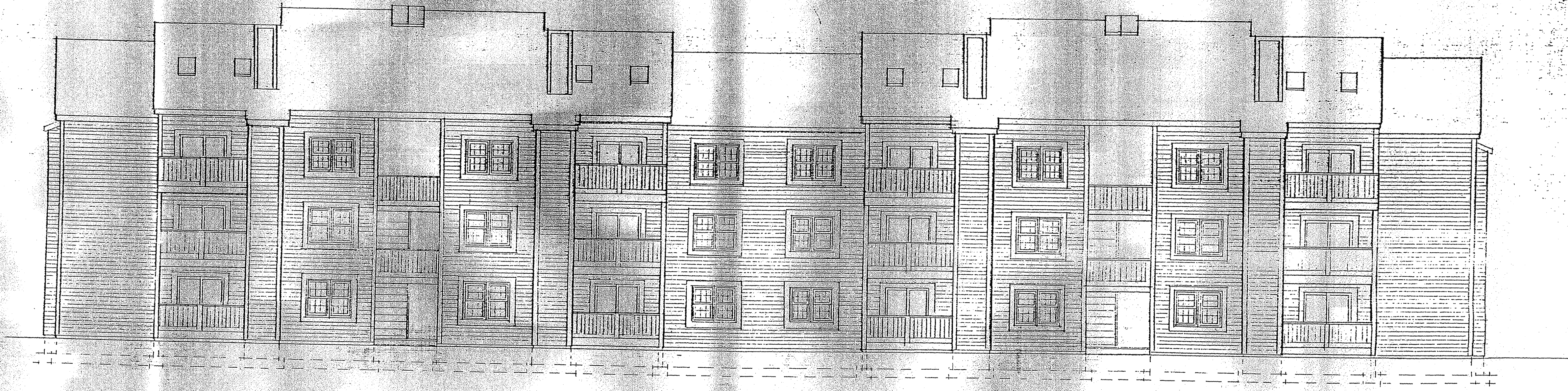
THE ORCHARDS  
 PLEASANTVILLE, NEW JERSEY

NO.	REVISIONS

DRAWING NO. 2422  
 DRAWN BY: ASH  
 CHECKED BY: ASH

SHEET NO. 17 of 20





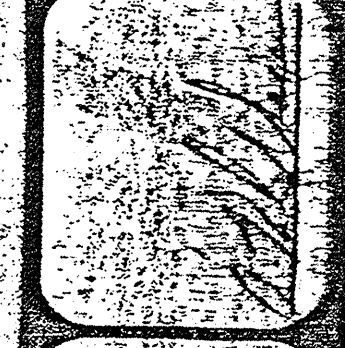
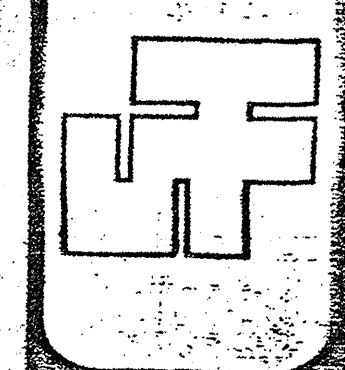
REAR ELEVATION  
SCALE: 1/8" = 1'-0"  
BUILDING "B"



LEFT SIDE ELEVATION  
SCALE: 1/8" = 1'-0"

FRONT ELEVATION  
SCALE: 1/8" = 1'-0"  
BUILDING "B"

SASEEN & HARPER  
ARCHITECTS  
A PROFESSIONAL ASSOCIATION  
228 N. MAIN STREET  
PLEASANTVILLE, N.J. 08859  
PHONE: (609) 616-7500  
F.L.A. #1018  
N.J.A. #0800  
NJ P.L.L.C. #0072



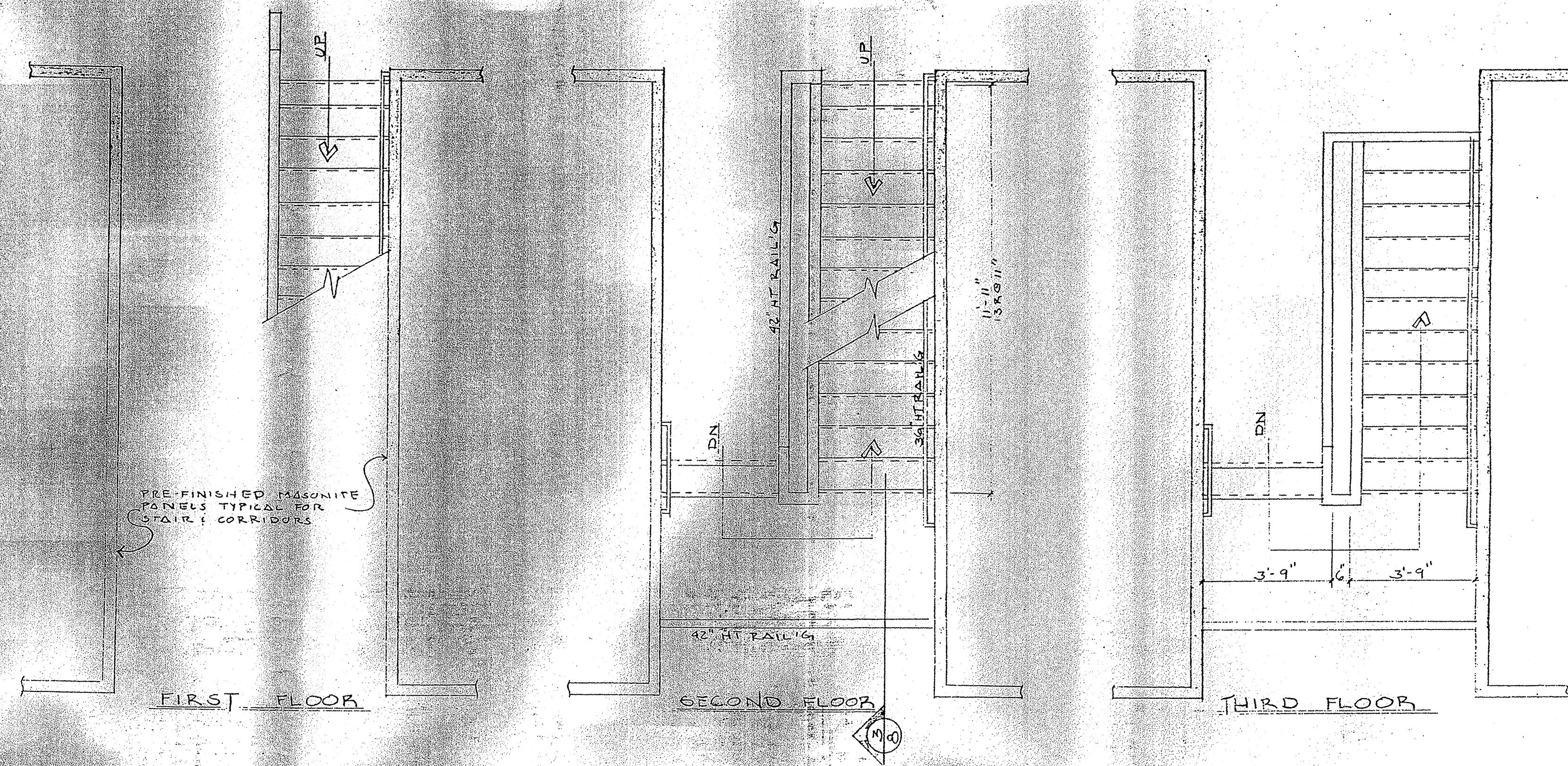
THE ORCHARDS

PLEASANTVILLE, NEW JERSEY

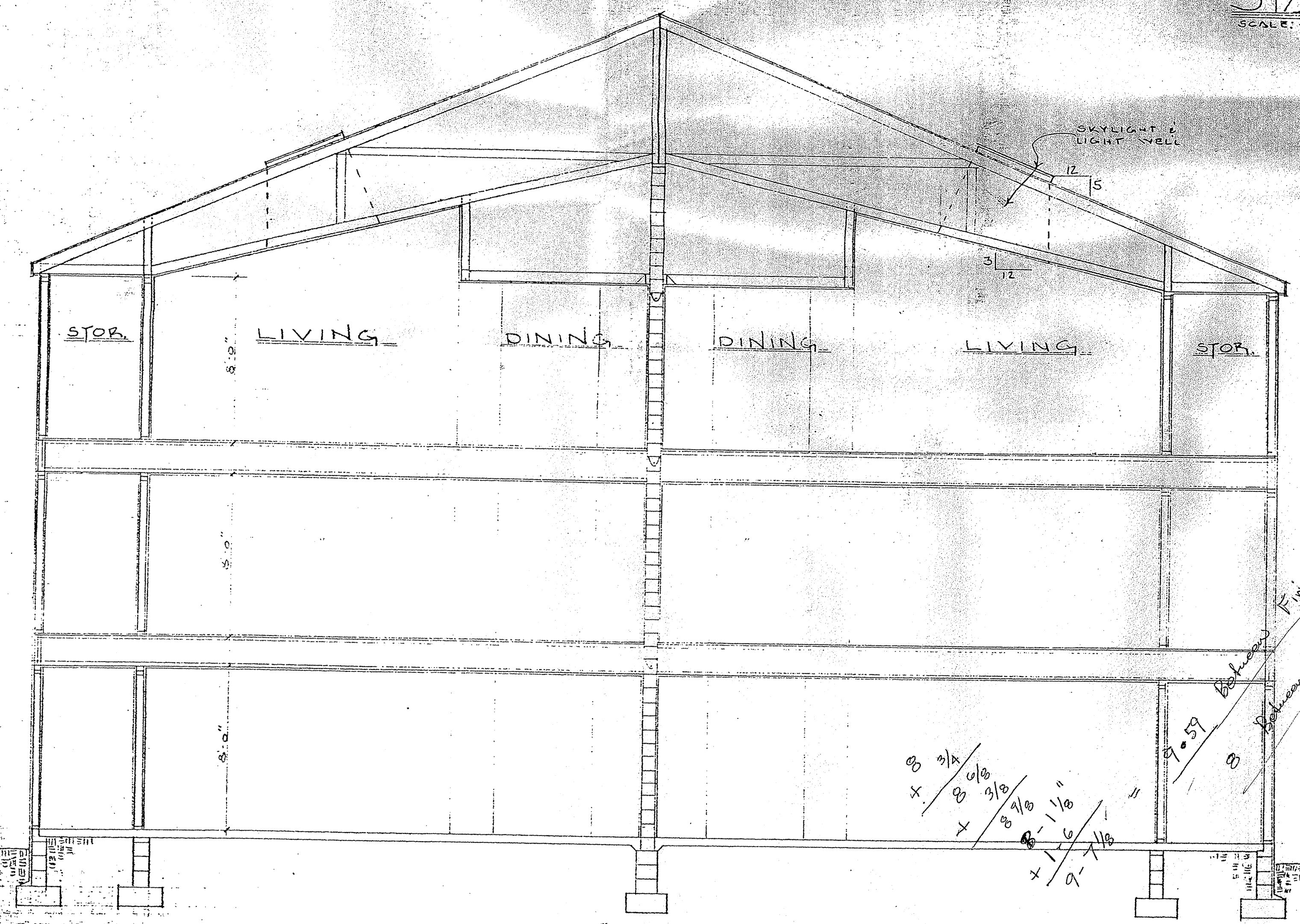
REVISIONS



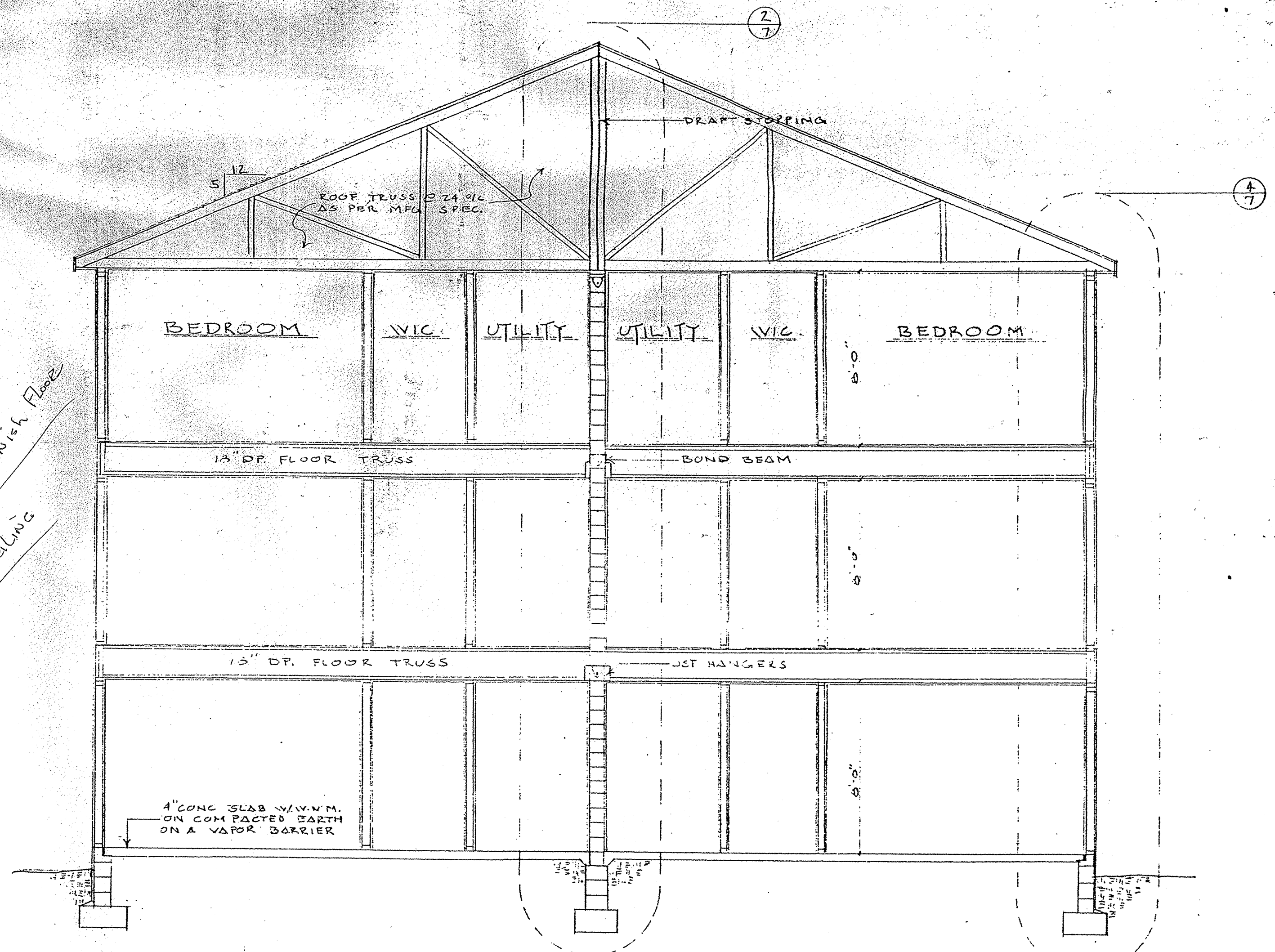




STAIR PLAN  
SCALE: 3/8" = 1'-0"



CROSS-SECTION A  
SCALE: 1/8" = 1'-0"



CROSS-SECTION B  
SCALE: 1/4" = 1'-0"

**SASEN & HARPER**  
 ARCHITECTS  
 A PROFESSIONAL ASSOCIATION  
 925 N. MAIN STREET  
 PLEASANTVILLE, N.J.  
 PHONE: (609) 645-7565  
 N.J. REG. NO. 12A100816  
 FLA. REG. NO. 46183

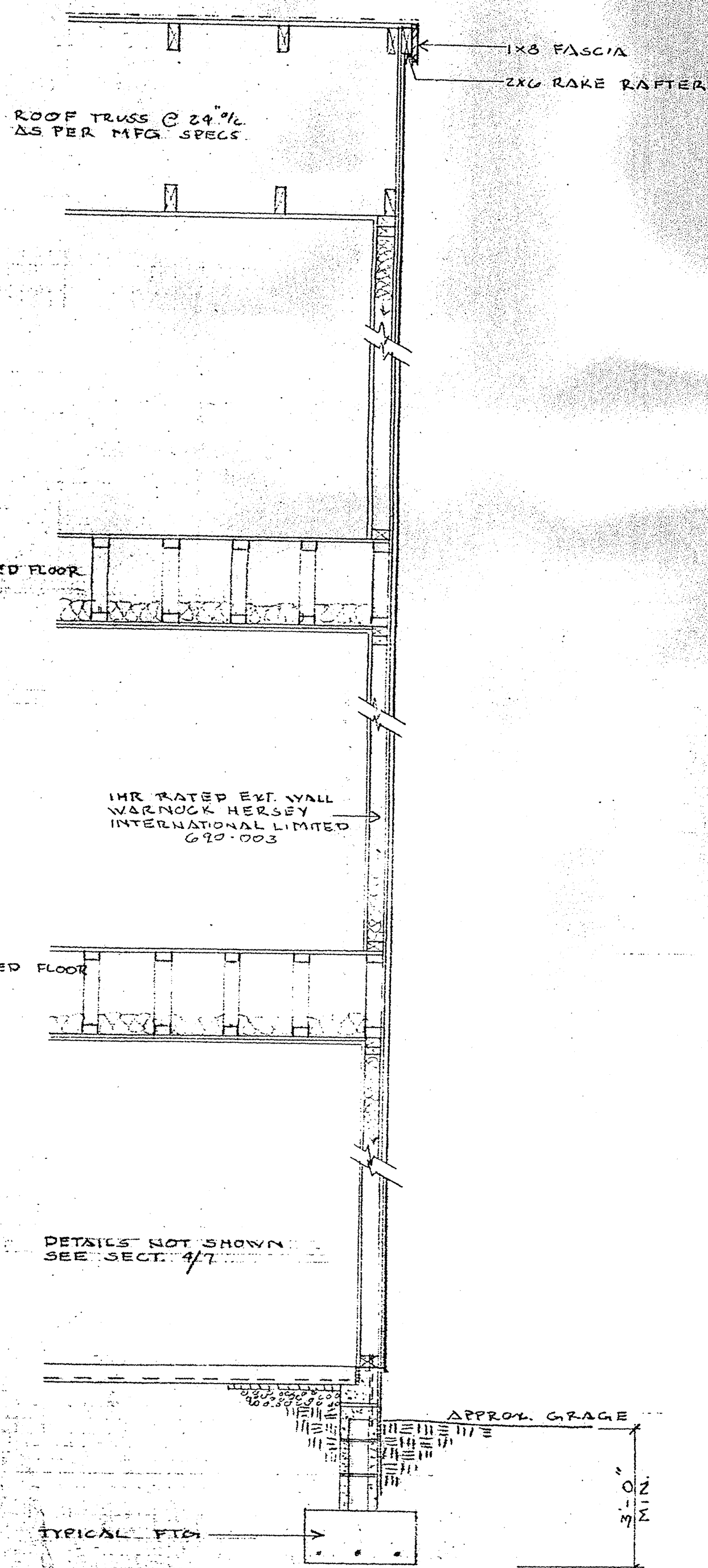
**THE ORCHARDS**  
 PLEASANTVILLE, NEW JERSEY

REVISIONS  
 \_\_\_\_\_  
 \_\_\_\_\_  
 \_\_\_\_\_  
 \_\_\_\_\_

COMM. NO. 2454  
 DRAWN BY JEH  
 CHKD. BY JCS  
 DATE 12-11-09

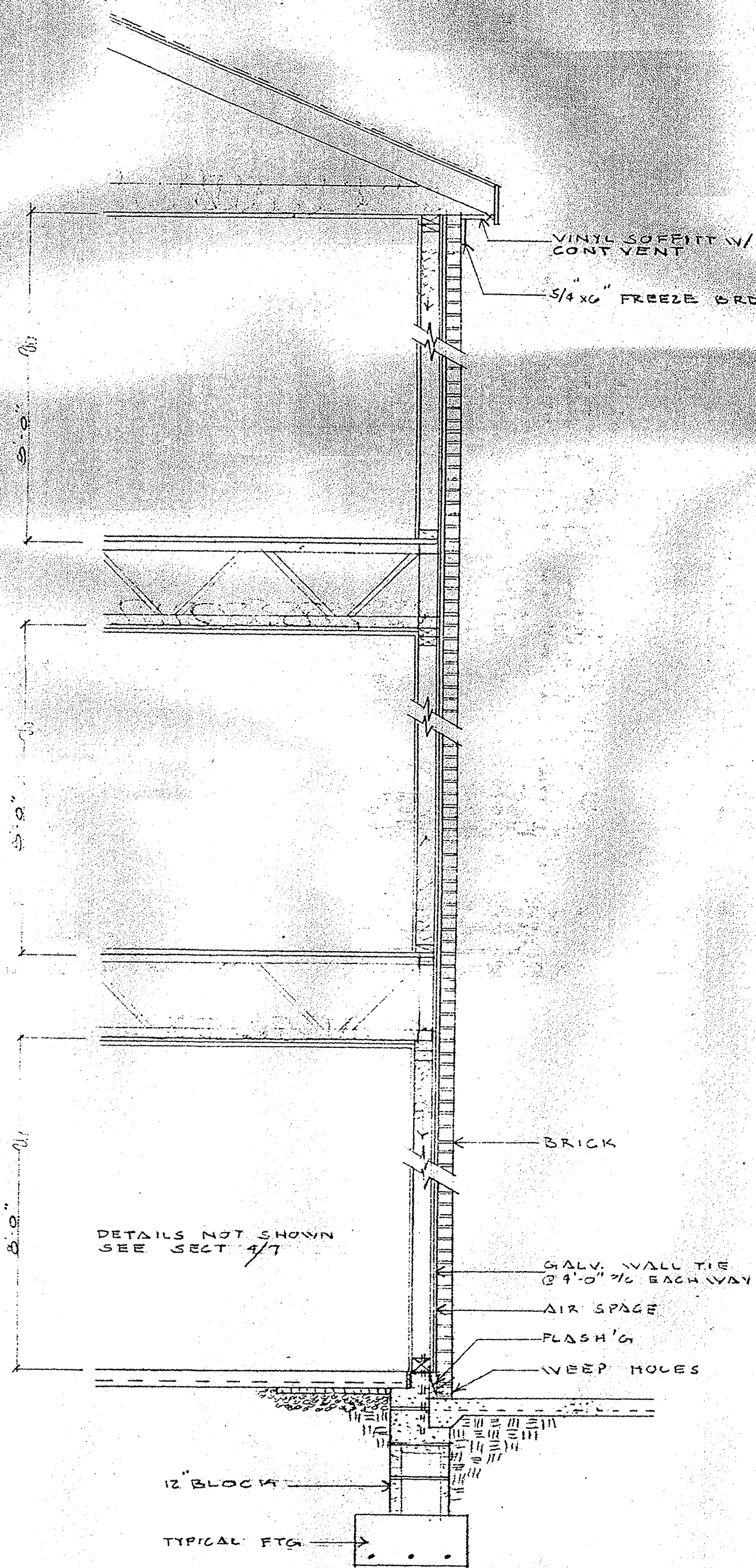
SHEET NO.  
 10 OF 10





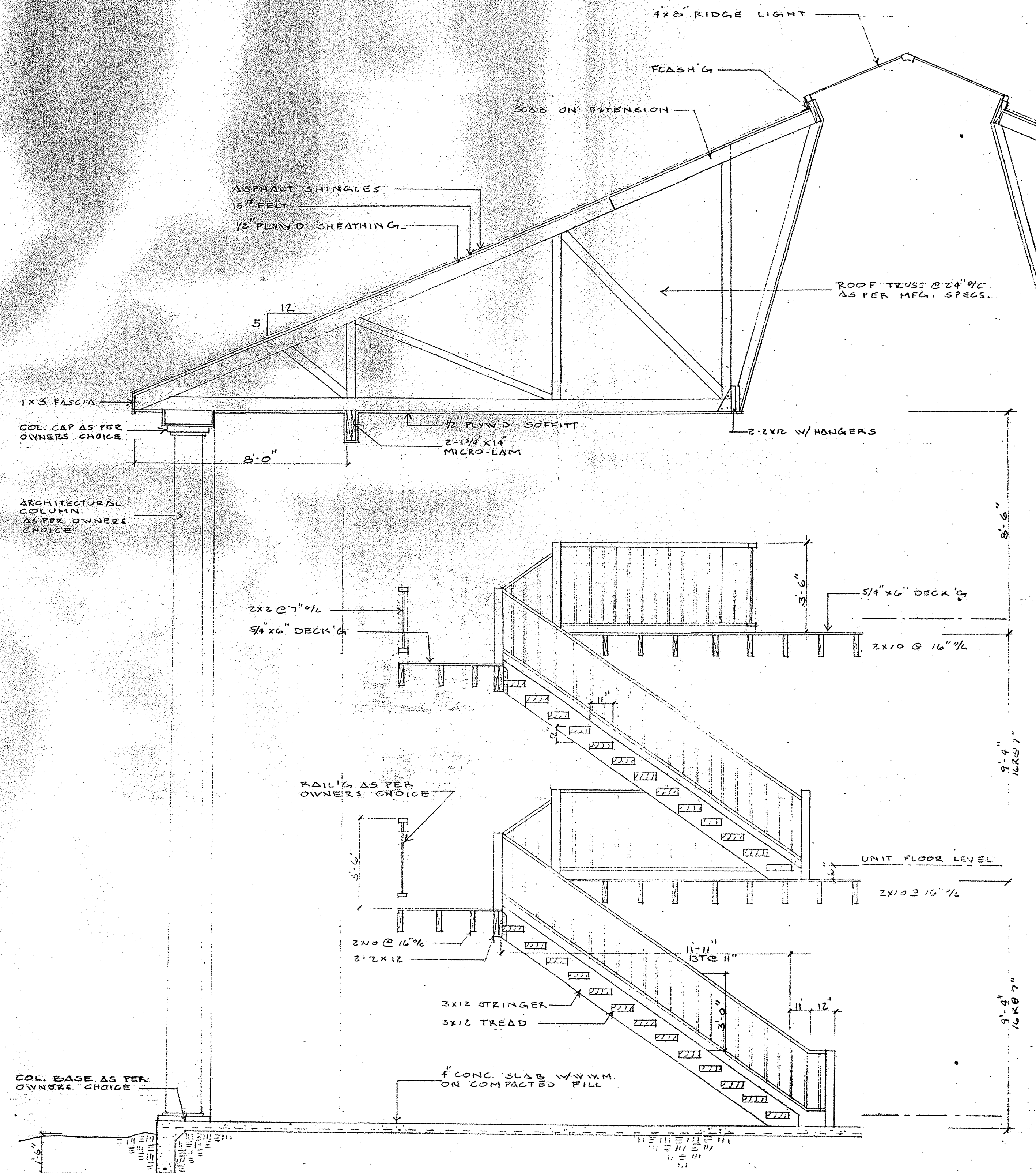
SECTION 1

1/8



SECTION 2

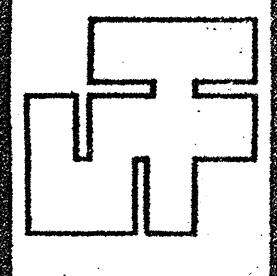
2/8



SECTION 3

3/8

**SASEN & HARPER**  
 ARCHITECTS  
 A PROFESSIONAL ASSOCIATION  
 HARRY S. HARPER, JR.  
 A. RICHARD SASEN  
 PLEASANTVILLE, N.J.  
 N.J.A.I. 03916  
 N.J.A.I. 08900  
 FLA. #183  
 PHONE: (909) 645-7860



THE ORCHARDS  
 PLEASANTVILLE, NEW JERSEY

NO.	REVISIONS

COMM. NO. 3434  
 DRAWN BY JSH  
 CHKD. BY ACS  
 DATE 12-14-85

SHEET NO. 10  
 of 10