

PLANTING SCHEDULE

SYMBOL	QUANTITY	BOTANICAL NAME	COMMON NAME	SIZE	REMARKS
⊙	27	ACER RUBRUM V. THORNTON	RED MAPLE	12" CAL. 10' H	B & B
⊙	04	QUERCUS ALBA	WHITE OAK	12" CAL. 10' H	B & B
⊙	20	QUERCUS COCAINIA	SCARLET OAK	12" CAL. 10' H	B & B
⊙	11	QUERCUS PRINUS	CHESAPEAKE OAK	12" CAL. 10' H	B & B
TOTAL =					68

SYMBOL	QUANTITY	BOTANICAL NAME	COMMON NAME	SIZE	REMARKS
⊙	13	PRUNUS SPINOSA	GREEN ASH	2" CAL.	B & B
⊙	12	NYCTAGYNIA SPINOSA	SOURWOOD	2" CAL.	B & B
TOTAL =					25

SYMBOL	QUANTITY	BOTANICAL NAME	COMMON NAME	SIZE	REMARKS
⊙	5	QUERCUS FLORIDA	WHITE FLORIDIAN OAK	8" HT	B & B
⊙	7	BETULA POPULIFOLIA	GRAY BIRCH	8" HT	B & B
TOTAL =					12

SYMBOL	QUANTITY	BOTANICAL NAME	COMMON NAME	SIZE	REMARKS
⊙	38	JUNIPERUS WENMANII	RED CEDAR	6" HT	B & B
⊙	30	PINUS RESINOSA	PITCH PINE	6" HT	B & B
TOTAL =					68

SYMBOL	QUANTITY	BOTANICAL NAME	COMMON NAME	SIZE	REMARKS
⊙	34	NYCTAGYNIA SPINOSA	RED SPANISH OAK	2-1/2" - 3"	B & B
⊙	10	KELC QUINCY	INHERENT	2-1/2" - 3"	B & B
⊙	42	PAUNIA LATIFOLIA	HORNBURN LAUREL	2-1/2" - 3"	B & B
⊙	62	MYRTICA PANDOLFINA	HURRICANE BARRIER	2-1/2" - 3"	B & B
⊙	31	PERSEA GUYANENSIS	ASHWOOD	2-5/8" - 3"	B & B
TOTAL =					229

LOT DISTURBANCE SUMMARY

LOT #	TOTAL LOT AREA (SQ FT)	PROPOSED LOT AREA (SQ FT)	MAX. LOT AREA (SQ FT)	ADDITIONAL TREE PLANTING REQUIRED
1	18,850	7,282	30K	0
2	17,500	8,795	30K	0
3	17,500	8,795	30K	0
4	17,500	8,795	30K	0
5	17,500	8,795	30K	0
6	17,500	8,795	30K	0
7	17,500	8,795	30K	0
8	17,500	8,795	30K	0
9	17,500	8,795	30K	0
10	17,500	8,795	30K	0
11	17,500	8,795	30K	0
12	17,500	8,795	30K	0
13	17,500	8,795	30K	0
14	17,500	8,795	30K	0
15	17,500	8,795	30K	0
16	17,500	8,795	30K	0
17	17,500	8,795	30K	0
18	17,500	8,795	30K	0
19	17,500	8,795	30K	0
20	17,500	8,795	30K	0
21	17,500	8,795	30K	0
22	17,500	8,795	30K	0
23	17,500	8,795	30K	0
24	17,500	8,795	30K	0
25	17,500	8,795	30K	0
26	17,500	8,795	30K	0
27	17,500	8,795	30K	0
28	17,500	8,795	30K	0
29	17,500	8,795	30K	0
30	17,500	8,795	30K	0
31	17,500	8,795	30K	0
32	17,500	8,795	30K	0
33	17,500	8,795	30K	0
34	17,500	8,795	30K	0
35	17,500	8,795	30K	0
36	17,500	8,795	30K	0
37	17,500	8,795	30K	0
38	17,500	8,795	30K	0
39	17,500	8,795	30K	0
40	17,500	8,795	30K	0
41	17,500	8,795	30K	0
42	17,500	8,795	30K	0
43	17,500	8,795	30K	0
44	17,500	8,795	30K	0
45	17,500	8,795	30K	0
46	17,500	8,795	30K	0
47	17,500	8,795	30K	0
48	17,500	8,795	30K	0
49	17,500	8,795	30K	0
50	17,500	8,795	30K	0
51	17,500	8,795	30K	0
52	17,500	8,795	30K	0
53	17,500	8,795	30K	0
54	17,500	8,795	30K	0
55	17,500	8,795	30K	0
56	17,500	8,795	30K	0
57	17,500	8,795	30K	0
58	17,500	8,795	30K	0
59	17,500	8,795	30K	0
60	17,500	8,795	30K	0
61	17,500	8,795	30K	0
62	17,500	8,795	30K	0
63	17,500	8,795	30K	0
64	17,500	8,795	30K	0
65	17,500	8,795	30K	0
66	17,500	8,795	30K	0
67	17,500	8,795	30K	0
68	17,500	8,795	30K	0
69	17,500	8,795	30K	0
70	17,500	8,795	30K	0
71	17,500	8,795	30K	0
72	17,500	8,795	30K	0
73	17,500	8,795	30K	0
74	17,500	8,795	30K	0
75	17,500	8,795	30K	0
76	17,500	8,795	30K	0
77	17,500	8,795	30K	0
78	17,500	8,795	30K	0
79	17,500	8,795	30K	0
80	17,500	8,795	30K	0
81	17,500	8,795	30K	0
82	17,500	8,795	30K	0
83	17,500	8,795	30K	0
84	17,500	8,795	30K	0
85	17,500	8,795	30K	0
86	17,500	8,795	30K	0
87	17,500	8,795	30K	0
88	17,500	8,795	30K	0
89	17,500	8,795	30K	0
90	17,500	8,795	30K	0
91	17,500	8,795	30K	0
92	17,500	8,795	30K	0
93	17,500	8,795	30K	0
94	17,500	8,795	30K	0
95	17,500	8,795	30K	0
96	17,500	8,795	30K	0
97	17,500	8,795	30K	0
98	17,500	8,795	30K	0
99	17,500	8,795	30K	0
100	17,500	8,795	30K	0

EXISTING TREE LEGEND

- ⊙ EXISTING OAK TREE
- ⊙ EXISTING PINE TREE
- ⊙ EXISTING PINE TREE

NOTE: ALL EXISTING TREES SHALL BE MAINTAINED AND PROTECTED FOR THE DURATION OF THE PROJECT UNLESS OTHERWISE NOTED.

MAJOR SUBDIVISION

FOR LANDSCAPE ARCHITECTURE, PLANNING, AND DESIGN

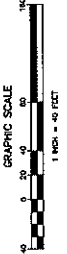
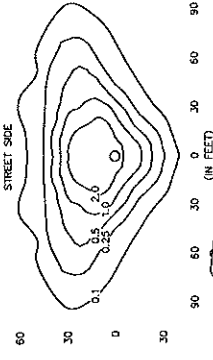
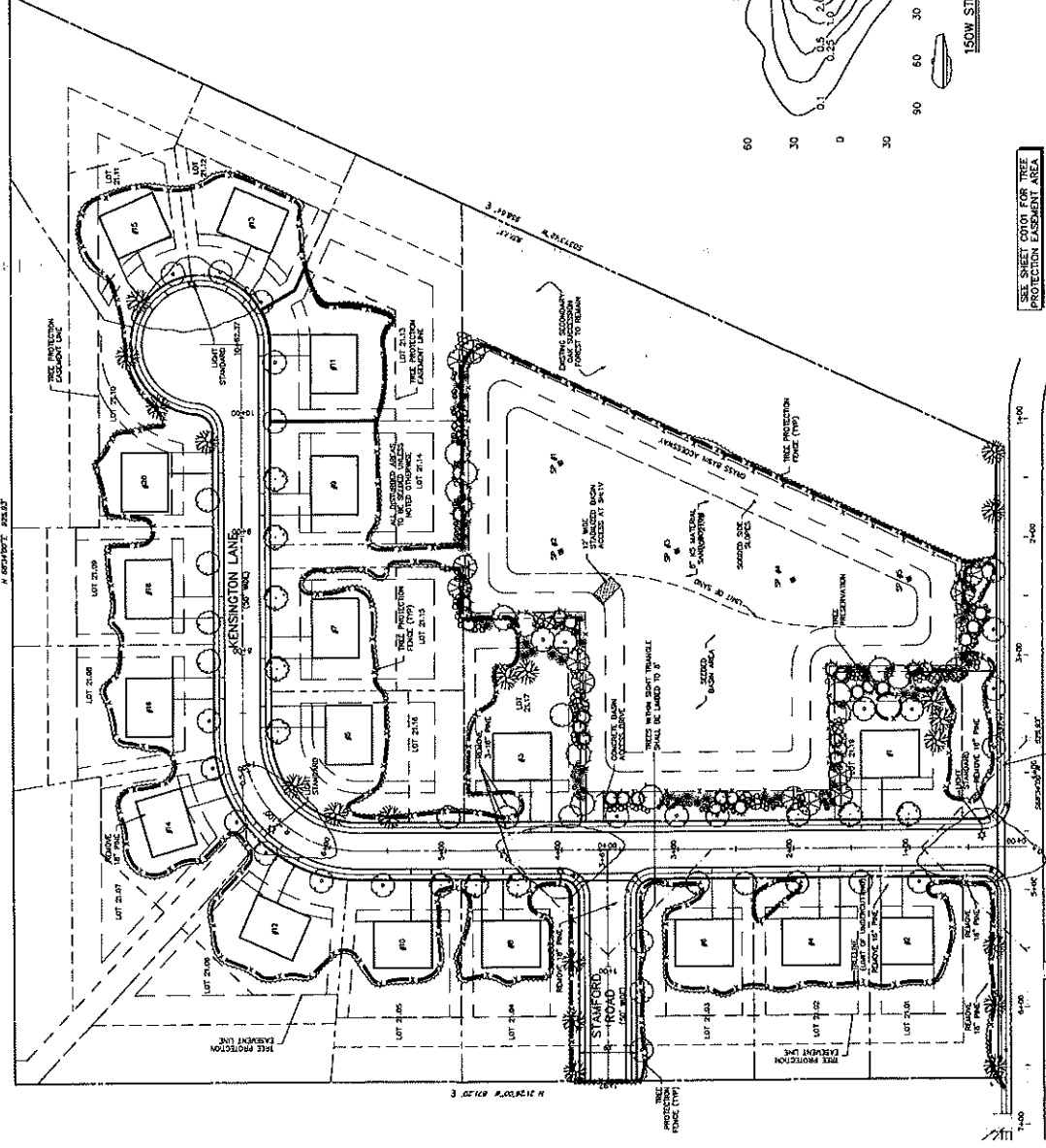
LANDSCAPING & LIGHTING PLAN

DROZDOV, SPORRAN & LISTER, LLC

1000 AVENUE 200, SUITE 200, FORT WORTH, TEXAS 76102

JASON I. SCULLO, P.E.

1000 AVENUE 200, SUITE 200, FORT WORTH, TEXAS 76102



THIS PLAN IS TO BE USED FOR LANDSCAPING AND LIGHTING PURPOSES ONLY.

ALL EXISTING TREES SHOWN ON THIS PLAN ARE TO BE MAINTAINED AND PROTECTED FOR THE DURATION OF THE PROJECT UNLESS OTHERWISE NOTED.

SEE SHEET 001 FOR TREE PROTECTION EASEMENT AREA.

THIS PLAN IS NOT FOR CONSTRUCTION PURPOSES. THIS PLAN IS ISSUED FOR REGULATORY REVIEW PURPOSES ONLY. THIS PLAN IS NOT VALID UNLESS A PROFESSIONAL SEAL IS AFFIXED HERETO.

CHELSEA AVENUE (10' WIDE) (UNIMPROVED) 2" MIN. DIA. IMPERMEABLE ASPHALT 6" DEPTH

M&E CONSULTANTS

Engineering & Architecture Services, Inc.

1000 AVENUE 200, SUITE 200, FORT WORTH, TEXAS 76102

JASON I. SCULLO, P.E.

1000 AVENUE 200, SUITE 200, FORT WORTH, TEXAS 76102

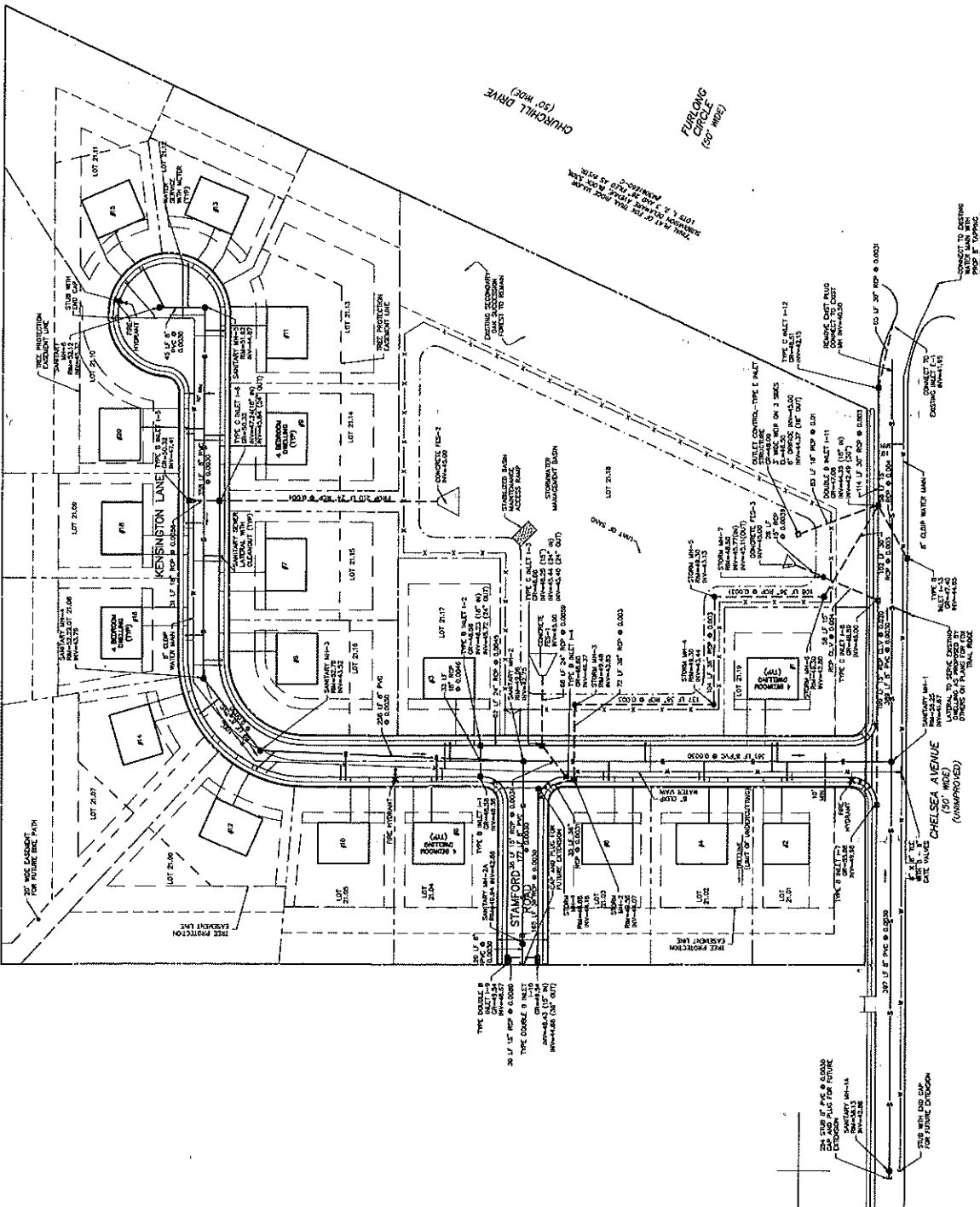
GALLANT FOX LANE
(60' WIDE)



SEE SHEET CIVIL FOR TREE PROTECTION EASEMENT AREA

UTILITY NOTES

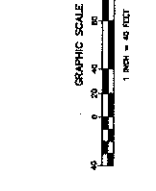
1. PROPOSED UTILITIES SHALL BE INSTALLED UNDERGROUND UNLESS OTHERWISE NOTED ON THE SHEET.
2. ALL UTILITIES SHALL BE INSTALLED IN ACCORDANCE WITH THE CITY OF ATLANTA'S UTILITIES DEPARTMENT REGULATIONS AND THE ATLANTA WATER AND SEWER DEPARTMENT REGULATIONS.
3. ALL UTILITIES SHALL BE INSTALLED IN ACCORDANCE WITH THE CITY OF ATLANTA'S UTILITIES DEPARTMENT REGULATIONS AND THE ATLANTA WATER AND SEWER DEPARTMENT REGULATIONS.
4. ALL UTILITIES SHALL BE INSTALLED IN ACCORDANCE WITH THE CITY OF ATLANTA'S UTILITIES DEPARTMENT REGULATIONS AND THE ATLANTA WATER AND SEWER DEPARTMENT REGULATIONS.
5. ALL UTILITIES SHALL BE INSTALLED IN ACCORDANCE WITH THE CITY OF ATLANTA'S UTILITIES DEPARTMENT REGULATIONS AND THE ATLANTA WATER AND SEWER DEPARTMENT REGULATIONS.
6. ALL UTILITIES SHALL BE INSTALLED IN ACCORDANCE WITH THE CITY OF ATLANTA'S UTILITIES DEPARTMENT REGULATIONS AND THE ATLANTA WATER AND SEWER DEPARTMENT REGULATIONS.
7. ALL UTILITIES SHALL BE INSTALLED IN ACCORDANCE WITH THE CITY OF ATLANTA'S UTILITIES DEPARTMENT REGULATIONS AND THE ATLANTA WATER AND SEWER DEPARTMENT REGULATIONS.
8. ALL UTILITIES SHALL BE INSTALLED IN ACCORDANCE WITH THE CITY OF ATLANTA'S UTILITIES DEPARTMENT REGULATIONS AND THE ATLANTA WATER AND SEWER DEPARTMENT REGULATIONS.
9. ALL UTILITIES SHALL BE INSTALLED IN ACCORDANCE WITH THE CITY OF ATLANTA'S UTILITIES DEPARTMENT REGULATIONS AND THE ATLANTA WATER AND SEWER DEPARTMENT REGULATIONS.
10. ALL UTILITIES SHALL BE INSTALLED IN ACCORDANCE WITH THE CITY OF ATLANTA'S UTILITIES DEPARTMENT REGULATIONS AND THE ATLANTA WATER AND SEWER DEPARTMENT REGULATIONS.
11. ALL UTILITIES SHALL BE INSTALLED IN ACCORDANCE WITH THE CITY OF ATLANTA'S UTILITIES DEPARTMENT REGULATIONS AND THE ATLANTA WATER AND SEWER DEPARTMENT REGULATIONS.
12. ALL UTILITIES SHALL BE INSTALLED IN ACCORDANCE WITH THE CITY OF ATLANTA'S UTILITIES DEPARTMENT REGULATIONS AND THE ATLANTA WATER AND SEWER DEPARTMENT REGULATIONS.
13. ALL UTILITIES SHALL BE INSTALLED IN ACCORDANCE WITH THE CITY OF ATLANTA'S UTILITIES DEPARTMENT REGULATIONS AND THE ATLANTA WATER AND SEWER DEPARTMENT REGULATIONS.
14. ALL UTILITIES SHALL BE INSTALLED IN ACCORDANCE WITH THE CITY OF ATLANTA'S UTILITIES DEPARTMENT REGULATIONS AND THE ATLANTA WATER AND SEWER DEPARTMENT REGULATIONS.
15. ALL UTILITIES SHALL BE INSTALLED IN ACCORDANCE WITH THE CITY OF ATLANTA'S UTILITIES DEPARTMENT REGULATIONS AND THE ATLANTA WATER AND SEWER DEPARTMENT REGULATIONS.
16. ALL UTILITIES SHALL BE INSTALLED IN ACCORDANCE WITH THE CITY OF ATLANTA'S UTILITIES DEPARTMENT REGULATIONS AND THE ATLANTA WATER AND SEWER DEPARTMENT REGULATIONS.
17. ALL UTILITIES SHALL BE INSTALLED IN ACCORDANCE WITH THE CITY OF ATLANTA'S UTILITIES DEPARTMENT REGULATIONS AND THE ATLANTA WATER AND SEWER DEPARTMENT REGULATIONS.
18. ALL UTILITIES SHALL BE INSTALLED IN ACCORDANCE WITH THE CITY OF ATLANTA'S UTILITIES DEPARTMENT REGULATIONS AND THE ATLANTA WATER AND SEWER DEPARTMENT REGULATIONS.



- NATURAL GAS SERVICE LOCATIONS TO BE DETERMINED BY CONSULT
- ELECTRIC SERVICE LOCATIONS TO BE DETERMINED BY ATLANTA CITY ELECTRIC
- TELEPHONE SERVICE LOCATIONS TO BE DETERMINED BY VERIZON
- WATER SERVICE LOCATIONS TO BE DETERMINED BY ATLANTA CITY WATER
- SEWER SERVICE LOCATIONS TO BE DETERMINED BY ATLANTA CITY SEWER

THIS PLAN IS NOT FOR CONSTRUCTION PURPOSES ONLY. IT IS A PRELIMINARY PLAN AND IS SUBJECT TO CHANGE. IT IS THE FIELD LOCATION OF UTILITIES THAT SHALL BE USED FOR CONSTRUCTION.

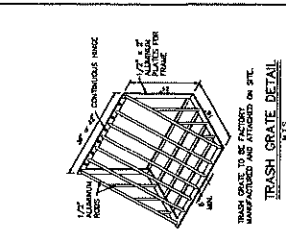
THIS PLAN IS NOT FOR CONSTRUCTION PURPOSES ONLY. IT IS A PRELIMINARY PLAN AND IS SUBJECT TO CHANGE. IT IS THE FIELD LOCATION OF UTILITIES THAT SHALL BE USED FOR CONSTRUCTION.



MAJOR SUBDIVISION
 MAJOR SUBDIVISION
 ATLANTA, GEORGIA

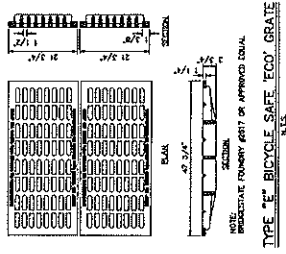
UTILITY PLAN
 BRODZOV, SPOKIN & LISTER, LLC
 JASON J. SCULLIO, P.E.

NO.	DATE	DESCRIPTION	BY
1	08/14/20	ISSUED FOR PERMIT	JSL
2	08/14/20	REVISIONS	JSL
3	08/14/20	REVISIONS	JSL
4	08/14/20	REVISIONS	JSL
5	08/14/20	REVISIONS	JSL
6	08/14/20	REVISIONS	JSL
7	08/14/20	REVISIONS	JSL
8	08/14/20	REVISIONS	JSL
9	08/14/20	REVISIONS	JSL
10	08/14/20	REVISIONS	JSL



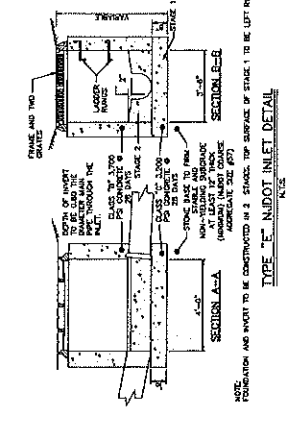
TRASH GRATE DETAIL
N.I.S.

THIS GRATE IS TO BE MANUFACTURED AS SHOWN ON SITE.



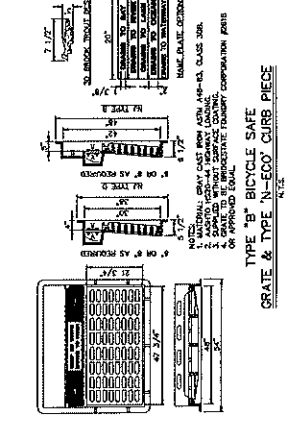
TYPE 'E' BICYCLE SAFE 'ECO' GRATE
N.I.S.

NOTE: SPECIFIC FURNISHING PER APPROVED DETAIL.



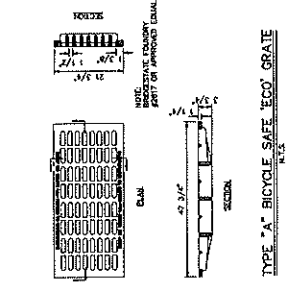
TYPE 'N' 'N' DOT INLET DETAIL
N.I.S.

NOTE: FOUNDATION AND SHORT TO BE CONSTRUCTED IN 3 STAGES. TOP SURFACE OF STAGE 1 TO BE LEFT ROUGH.



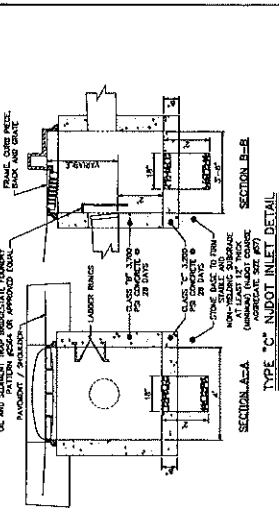
TYPE 'B' BICYCLE SAFE GRATE & TYPE 'N-ECO' CURB PIECE
N.I.S.

NOTE: MATERIAL GRATE CASE FOR AREA 4'-0\"/>

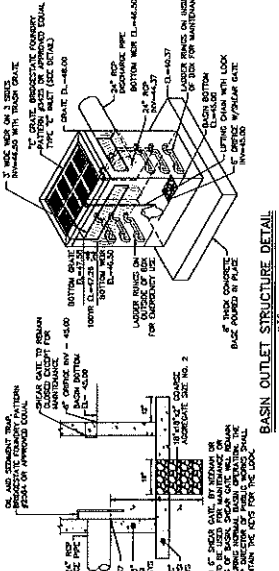


TYPE 'A' BICYCLE SAFE 'ECO' GRATE
N.I.S.

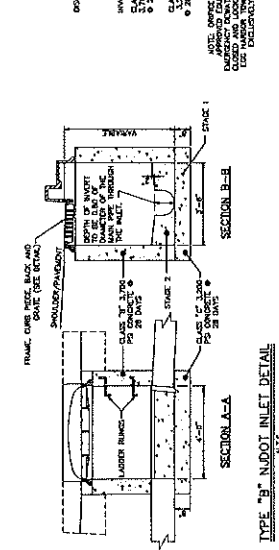
NOTE: FOUNDATION AND SHORT TO BE CONSTRUCTED IN 3 STAGES. TOP SURFACE OF STAGE 1 TO BE LEFT ROUGH.



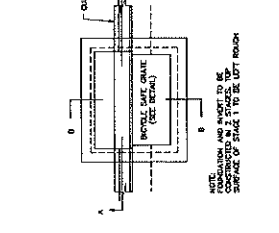
TYPE 'C' 'N' DOT INLET DETAIL
N.I.S.



BASIN OUTLET STRUCTURE DETAIL
N.I.S.



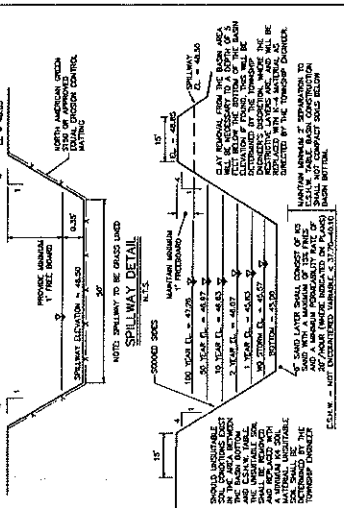
TYPE 'B' 'N' DOT INLET DETAIL
N.I.S.



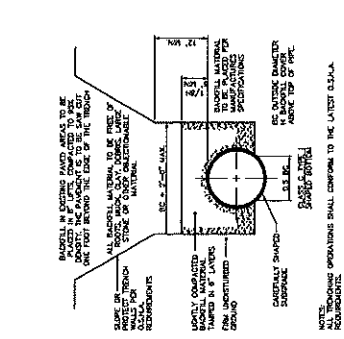
TYPE 'B' 'N' DOT INLET DETAIL
N.I.S.



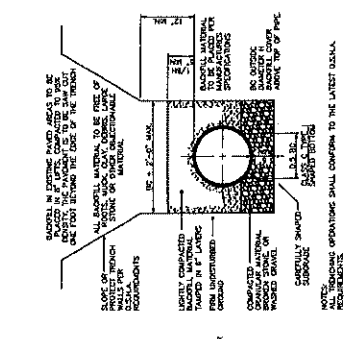
TYPE 'B' 'N' DOT INLET DETAIL
N.I.S.



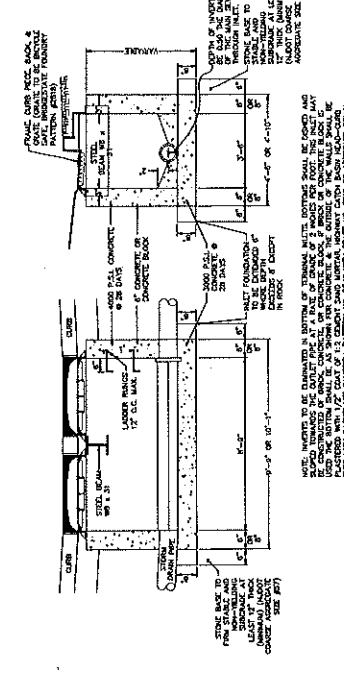
SPILLWAY DETAIL
N.I.S.



STORM SEWER BEDDING FOR SUITABLE MATERIAL DETAIL
N.I.S.



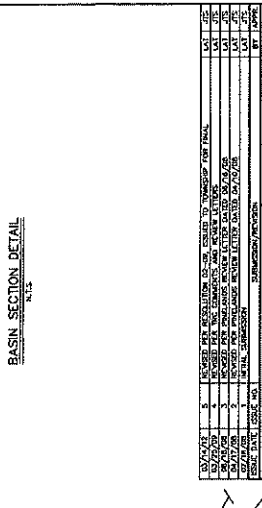
STORM SEWER BEDDING FOR UNSUITABLE MATERIAL DETAIL
N.I.S.



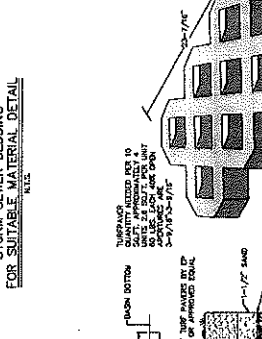
DOUBLE TYPE 'B' INLET DETAIL
N.I.S.



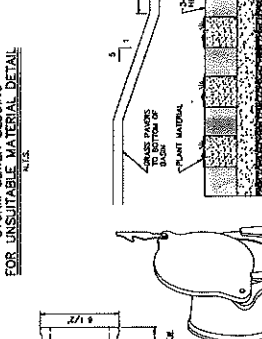
DOUBLE TYPE 'B' INLET DETAIL
N.I.S.



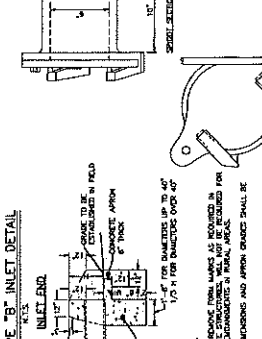
BASIN SECTION DETAIL
N.I.S.



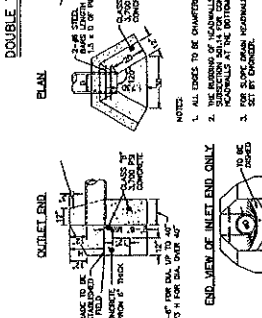
TUBE PAVEN DETAIL FOR STABILIZED BASIN ACCESS
N.I.S.



CAST IRON SHEAR GATE DETAIL
N.I.S.



CONCRETE HEADWALL AND APRON DETAIL
N.I.S.



CONCRETE HEADWALL AND APRON DETAIL
N.I.S.

NO.	DESCRIPTION	QUANTITY	UNIT	DATE
1	CONCRETE	100	CU YD	10/10/00
2	STEEL	100	LB	10/10/00
3	WOOD	100	CU YD	10/10/00
4	PAVING	100	CU YD	10/10/00
5	GRASS	100	CU YD	10/10/00

MAJOR SUBDIVISION
STORMWATER DETAIL SHEET
DROZDOV, SPORKIN & LISTER, LLC
JASON T. SCULLO, P.E.

CONCRETE HEADWALL AND APRON DETAIL
N.I.S.

CAST IRON SHEAR GATE DETAIL
N.I.S.

DOUBLE TYPE 'B' INLET DETAIL
N.I.S.

DOUBLE TYPE 'B' INLET DETAIL
N.I.S.

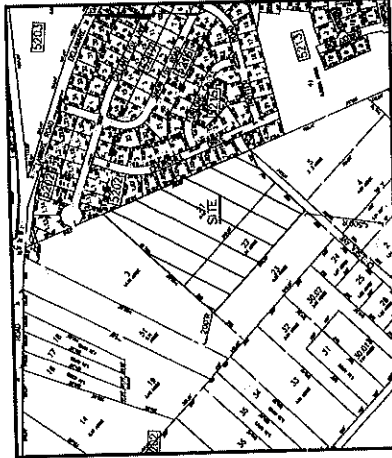
MAJOR SUBDIVISION

BLOCK 5202 LOTS 21 & 22
EGG HARBOR TOWNSHIP, ATLANTIC COUNTY, NEW JERSEY

FINAL MAJOR SUBDIVISION PLANS



AERIAL MAP
SCALE 1" = 100'



KEY MAP—OFFICIAL TAX MAP OF EGG HARBOR TOWNSHIP
SCALE 1" = 300'

NOTE: SURROUNDING LOTS AND TRACTS WITHIN 200 FEET ARE RESIDENTIAL.

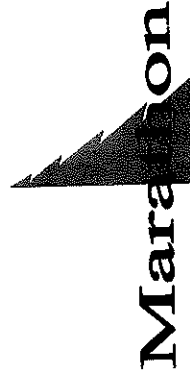


SITE PHOTO
FROM OFFICIAL AERIAL CAMERA IMPRINT

APPLICANT:

DROZDOV, SPORKIN AND LISTER, LLC C/O COOPER LEVENSON

1125 ATLANTIC AVENUE
ATLANTIC CITY, NJ 08401



ENGINEERING & ENVIRONMENTAL SERVICES, INC.

553 BECKETT ROAD, SUITE 608, SWEDESBORO, N.J. 08885
2922 ATLANTIC AVENUE, SUITE 3A, ATLANTIC CITY, N.J. 08401

THIS PLAN IS NOT FOR CONSTRUCTION PURPOSES.
THE PLAN IS FOR INFORMATION ONLY.
NO PART OF THIS PLAN SHALL BE USED AS A BASIS FOR ANY ACTION.
THE INFORMATION ON THIS PLAN IS PROVIDED AS IS AND WITHOUT WARRANTY.

OWNER/APPLICANT
DROZDOV, SPORKIN AND LISTER, LLC
1125 ATLANTIC AVENUE
ATLANTIC CITY, NJ 08401

APPLICANT INTENT
I, THE APPLICANT, HEREBY CERTIFY THAT THIS SUBDIVISION HAS BEEN
APPROVED BY THE BOARD OF SUPERVISORS OF EGG HARBOR TOWNSHIP, NEW JERSEY, AND THAT I
WILL BE COMPLYING WITH ALL THE REQUIREMENTS OF THE TOWNSHIP ORDINANCES AND THE
STATE PLANNING COMMISSION, LOCAL AND STATE REGULATIONS, AND THE
FEDERAL AND STATE LAWS, AND I AM NOT PROVIDING ANY OTHER INFORMATION
NECESSARY FOR THE BOARD OF SUPERVISORS TO APPROVE THIS PLAN.

ATLANTIC COUNTY APPROVALS

DATE	BY	OFFICE

I HEREBY CERTIFY THAT THIS SUBDIVISION HAS BEEN
APPROVED BY THE BOARD OF SUPERVISORS OF EGG HARBOR TOWNSHIP, NEW JERSEY.

DESCRIPTION	DATE

SHEET INDEX

SHEET NO.	DATE	NO.	TITLE
1	10/15	0000	GENERAL NOTES
2	10/15	0001	GENERAL NOTES
3	10/15	0002	GENERAL NOTES
4	10/15	0003	GENERAL NOTES
5	10/15	0004	GENERAL NOTES
6	10/15	0005	GENERAL NOTES
7	10/15	0006	GENERAL NOTES
8	10/15	0007	GENERAL NOTES
9	10/15	0008	GENERAL NOTES
10	10/15	0009	GENERAL NOTES
11	10/15	0010	GENERAL NOTES
12	10/15	0011	GENERAL NOTES
13	10/15	0012	GENERAL NOTES
14	10/15	0013	GENERAL NOTES
15	10/15	0014	GENERAL NOTES
16	10/15	0015	GENERAL NOTES
17	10/15	0016	GENERAL NOTES
18	10/15	0017	GENERAL NOTES
19	10/15	0018	GENERAL NOTES
20	10/15	0019	GENERAL NOTES
21	10/15	0020	GENERAL NOTES
22	10/15	0021	GENERAL NOTES
23	10/15	0022	GENERAL NOTES
24	10/15	0023	GENERAL NOTES
25	10/15	0024	GENERAL NOTES
26	10/15	0025	GENERAL NOTES
27	10/15	0026	GENERAL NOTES
28	10/15	0027	GENERAL NOTES
29	10/15	0028	GENERAL NOTES
30	10/15	0029	GENERAL NOTES
31	10/15	0030	GENERAL NOTES
32	10/15	0031	GENERAL NOTES
33	10/15	0032	GENERAL NOTES
34	10/15	0033	GENERAL NOTES
35	10/15	0034	GENERAL NOTES
36	10/15	0035	GENERAL NOTES
37	10/15	0036	GENERAL NOTES
38	10/15	0037	GENERAL NOTES
39	10/15	0038	GENERAL NOTES
40	10/15	0039	GENERAL NOTES
41	10/15	0040	GENERAL NOTES
42	10/15	0041	GENERAL NOTES
43	10/15	0042	GENERAL NOTES
44	10/15	0043	GENERAL NOTES
45	10/15	0044	GENERAL NOTES
46	10/15	0045	GENERAL NOTES
47	10/15	0046	GENERAL NOTES
48	10/15	0047	GENERAL NOTES
49	10/15	0048	GENERAL NOTES
50	10/15	0049	GENERAL NOTES
51	10/15	0050	GENERAL NOTES
52	10/15	0051	GENERAL NOTES
53	10/15	0052	GENERAL NOTES
54	10/15	0053	GENERAL NOTES
55	10/15	0054	GENERAL NOTES
56	10/15	0055	GENERAL NOTES
57	10/15	0056	GENERAL NOTES
58	10/15	0057	GENERAL NOTES
59	10/15	0058	GENERAL NOTES
60	10/15	0059	GENERAL NOTES
61	10/15	0060	GENERAL NOTES
62	10/15	0061	GENERAL NOTES
63	10/15	0062	GENERAL NOTES
64	10/15	0063	GENERAL NOTES
65	10/15	0064	GENERAL NOTES
66	10/15	0065	GENERAL NOTES
67	10/15	0066	GENERAL NOTES
68	10/15	0067	GENERAL NOTES
69	10/15	0068	GENERAL NOTES
70	10/15	0069	GENERAL NOTES
71	10/15	0070	GENERAL NOTES
72	10/15	0071	GENERAL NOTES
73	10/15	0072	GENERAL NOTES
74	10/15	0073	GENERAL NOTES
75	10/15	0074	GENERAL NOTES
76	10/15	0075	GENERAL NOTES
77	10/15	0076	GENERAL NOTES
78	10/15	0077	GENERAL NOTES
79	10/15	0078	GENERAL NOTES
80	10/15	0079	GENERAL NOTES
81	10/15	0080	GENERAL NOTES
82	10/15	0081	GENERAL NOTES
83	10/15	0082	GENERAL NOTES
84	10/15	0083	GENERAL NOTES
85	10/15	0084	GENERAL NOTES
86	10/15	0085	GENERAL NOTES
87	10/15	0086	GENERAL NOTES
88	10/15	0087	GENERAL NOTES
89	10/15	0088	GENERAL NOTES
90	10/15	0089	GENERAL NOTES
91	10/15	0090	GENERAL NOTES
92	10/15	0091	GENERAL NOTES
93	10/15	0092	GENERAL NOTES
94	10/15	0093	GENERAL NOTES
95	10/15	0094	GENERAL NOTES
96	10/15	0095	GENERAL NOTES
97	10/15	0096	GENERAL NOTES
98	10/15	0097	GENERAL NOTES
99	10/15	0098	GENERAL NOTES
100	10/15	0099	GENERAL NOTES
101	10/15	0100	GENERAL NOTES

Marathon
Engineering & Environmental Services, Inc.
553 Beckett Road, Suite 608
Swedesboro, NJ 08885
2922 Atlantic Avenue, Suite 3A
Atlantic City, NJ 08401

MAJOR SUBDIVISION
COVER SHEET
DROZDOV, SPORKIN & LISTER, LLC
1125 ATLANTIC AVENUE, SUITE 3A
ATLANTIC CITY, NJ 08401
JASON I. SCULLO, P.E.
REGISTERED PROFESSIONAL ENGINEER
STATE OF NEW JERSEY
NO. 123456789
EXPIRES 12/31/2024