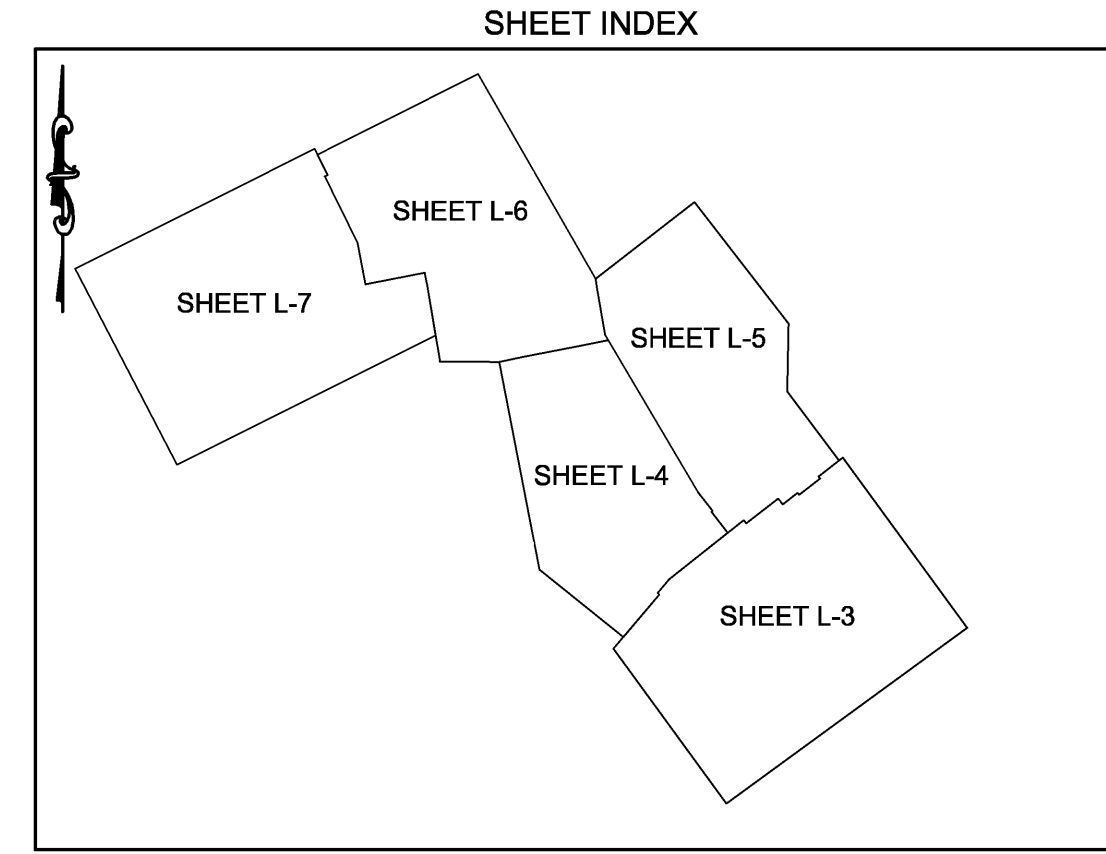


December 04, 2013 - 11:05am User: merrill C:\civ\3D Projects\1045050505 - Phase 3 - 3-APPRODUCTION\1045050505 - Landscape Final.dwg



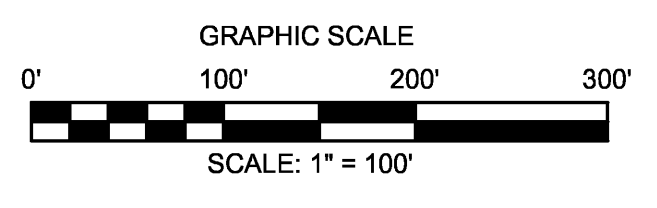
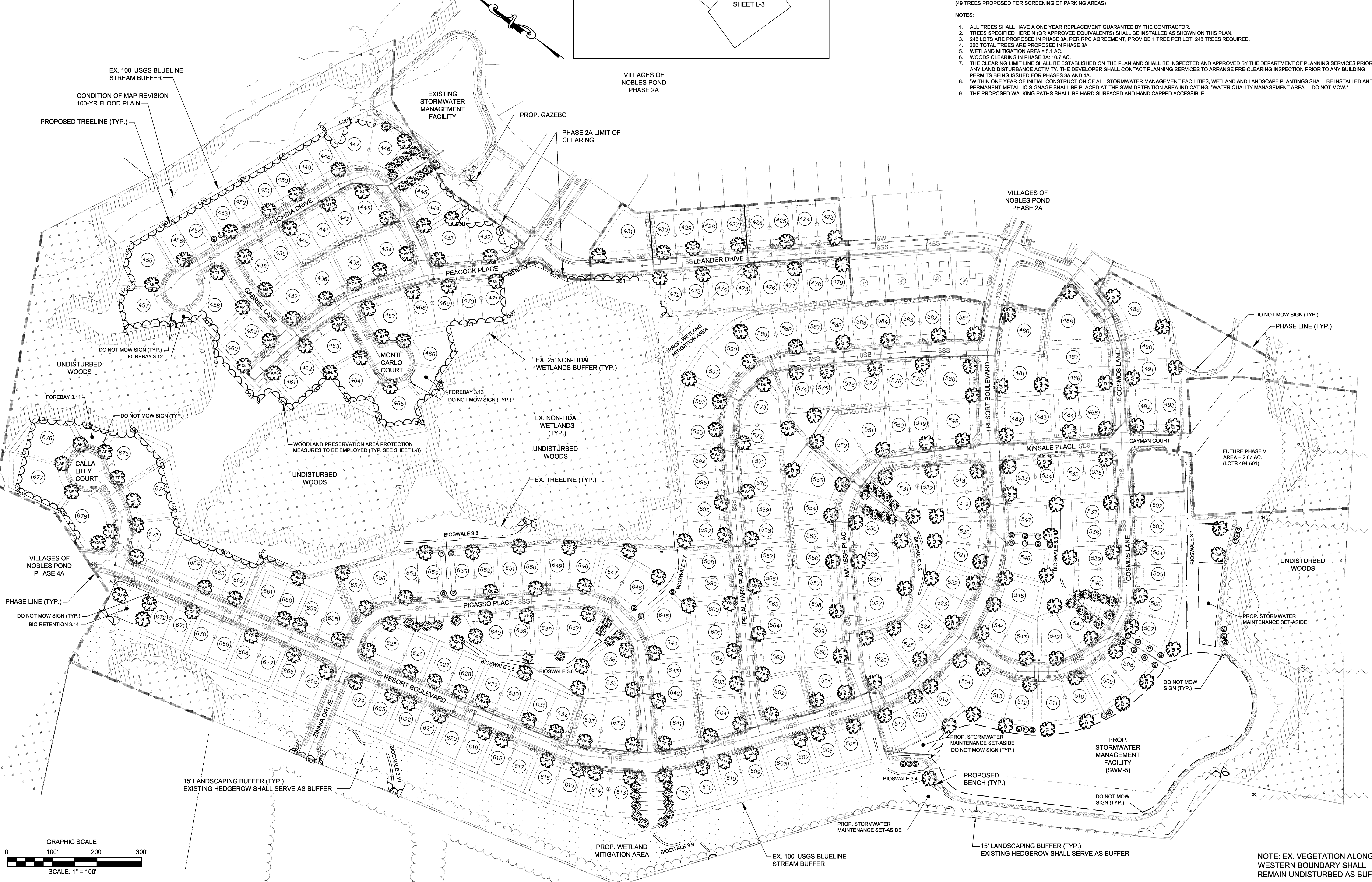
**PLANTING SCHEDULE - PHASE 3A**

SYMBOL	QTY	COMMON NAME	BOTANICAL NAME	SIZE	ROOT	SPACING
AM	51	HEDGE MAPLE	ACER CANPESYRE	1 1/2" CAL	BALLED & BURLAPPED	20' O.C.
CF	55	FLOWERING DOGWOOD (WHITE)	CORNUS FLORIDA "ALBA"	5/8"	BALLED & BURLAPPED	20' O.C.
AP	17	"CRIMSON KING" NORWAY MAPLE	ACER PLATANOIDES "CRIMSON KING"	1 1/2" CAL	BALLED & BURLAPPED	35' O.C.
AS	18	SUGAR MAPLE	A. SACCHARUM "GREEN MOUNTAIN"	1 1/2" CAL	BALLED & BURLAPPED	35' O.C.
GT	20	"SHADEMASTER" HONEYLOCUST	GLEDITIA TRIA INERNIS "SHADEMASTER"	1 1/2" CAL	BALLED & BURLAPPED	35' O.C.
OB	21	NORTHERN RED OAK	Q. BOREALIS	1 1/2" CAL	BALLED & BURLAPPED	35' O.C.
OP	21	WILLOW OAK	Q. PHellos	1 1/2" CAL	BALLED & BURLAPPED	35' O.C.
SJ	20	JAPANESE SCHOLAR TREE	SOPHORA JAPONICA "REGENT"	1 1/2" CAL	BALLED & BURLAPPED	35' O.C.
TT	25	"GREEN MOUNTAIN" LINDEN	T. TOMENTOSA "GREEN MOUNTAIN"	1 1/2" CAL	BALLED & BURLAPPED	35' O.C.
255 TREES						
SYMBOL	QTY	COMMON NAME	BOTANICAL NAME	SIZE	ROOT	SPACING
AC	26	WHITE FIR	ABIES CONCOLOR	5'-6"	BALLED & BURLAPPED	15-30' O.C.
JV	26	EASTERN RED CEDAR	JUNIPERUS VIRGINIANA	5'-8"	BALLED & BURLAPPED	10-15' O.C.
IG	38	INKBERRY	ILEX GLABRA	3 GAL. CONT.		

(49 TREES PROPOSED FOR SCREENING OF PARKING AREAS)

NOTES:

- ALL TREES SHALL HAVE A ONE YEAR REPLACEMENT GUARANTEE BY THE CONTRACTOR.
- TREES SPECIFIED HEREIN (OR APPROVED EQUIVALENTS) SHALL BE INSTALLED AS SHOWN ON THIS PLAN.
- 248 LOTS ARE PROPOSED IN PHASE 3A. PER RPC AGREEMENT, PROVIDE 1 TREE PER LOT; 248 TREES REQUIRED.
- 300 TOTAL TREES ARE PROPOSED IN PHASE 3A
- WETLAND MITIGATION AREA = 5.1 AC.
- WOODS CLEARING IN PHASE 3A: 10.7 AC.
- THE CLEARING LIMIT LINE SHALL BE ESTABLISHED ON THE PLAN AND SHALL BE INSPECTED AND APPROVED BY THE DEPARTMENT OF PLANNING SERVICES PRIOR TO ANY LAND DISTURBANCE ACTIVITY. THE DEVELOPER SHALL CONTACT PLANNING SERVICES TO ARRANGE PRE-CLEARING INSPECTION PRIOR TO ANY BUILDING PERMITS BEING ISSUED FOR PHASES 3A AND 4A.
- "WITHIN ONE YEAR OF INITIAL CONSTRUCTION OF ALL STORMWATER MANAGEMENT FACILITIES, WETLAND AND LANDSCAPE PLANTINGS SHALL BE INSTALLED AND PERMANENT METALLIC SIGNAGE SHALL BE PLACED AT THE SWM DETENTION AREA INDICATING: "WATER QUALITY MANAGEMENT AREA -- DO NOT MOW."
- THE PROPOSED WALKING PATHS SHALL BE HARD SURFACED AND HANDICAPPED ACCESSIBLE.



NOTE: EX. VEGETATION ALONG WESTERN BOUNDARY SHALL REMAIN UNDISTURBED AS BUFFER

**REVISIONS**

REV. #	DATE	DESCRIPTION
1	DEC. 2013	ADDRESSING KENT COUNTY PLANNING COMMENTS

Celebrating 25 Years of Quality Services and Innovation

**McCRONE**

ENGINEERS ■ SURVEYORS ■ PLANNERS  
ANNAPOLIS ■ CENTREVILLE ■ ELKTON ■ SALISBURY ■ WILMINGTON

106 EAST MAIN STREET, SUITE 101  
ELKTON, MD 21921  
(410) 398-1550  
www.mccrone-inc.com  
Copyright © 2012

DATE:	FEBRUARY 2013
JOB NUMBER:	D390182
SCALE:	1" = 100'
DRAWN BY:	JMA
DESIGNED BY:	JMA
APPROVED BY:	DSS
FOLDER REFERENCE:	F-D390182

OVERALL LANDSCAPING PLAN - PHASE 3

FILE NO. SL-11-01

**VILLAGES OF NOBLES POND  
PHASES 3A & 4A**

KENTON HUNDRED, KENT COUNTY, DELAWARE

FOR: EDDIE EVANS FARMS, LLC

SHEET NO.: **L-1**

FILE NO.: **1446-B**

**PLANTING SCHEDULE - PHASE 4A**

SYMBOL	QTY	COMMON NAME	BOTANICAL NAME	SIZE	ROOT	SPACING
AM	22	HEDGE MAPLE	ACER CANPESSTRE	1 1/2" CAL.	BALLED & BURLAPPED	20' O.C.
CF	22	FLOWERING DOGWOOD (WHITE)	CORNUS FLORIDA "ALBA"	5/6"	BALLED & BURLAPPED	20' O.C.
AP	24	"CRIMSON KING" NORWAY MAPLE	ACER PLATANOIDES "CRIMSON KING"	1 1/2" CAL.	BALLED & BURLAPPED	35' O.C.
AS	20	SUGAR MAPLE	A. SACCHARUM "GREEN MOUNTAIN"	1 1/2" CAL.	BALLED & BURLAPPED	35' O.C.
QT	20	"SHADEMASTER" HONEYLOCUST	A. SACCHARUM "SHADEMASTER"	1 1/2" CAL.	BALLED & BURLAPPED	35' O.C.
OB	21	NORTHERN RED OAK	Q. BOREALIS	1 1/2" CAL.	BALLED & BURLAPPED	35' O.C.
OP	21	WILLOW OAK	Q. PHELLOS	1 1/2" CAL.	BALLED & BURLAPPED	35' O.C.
SJ	29	JAPANESE SCHOLAR TREE	SOPHORA JAPONICA "REGENT"	1 1/2" CAL.	BALLED & BURLAPPED	35' O.C.
TT	22	"GREEN MOUNTAIN" LINDEN	T. TOMENTOSA "GREEN MOUNTAIN"	1 1/2" CAL.	BALLED & BURLAPPED	35' O.C.

**201 TREES**

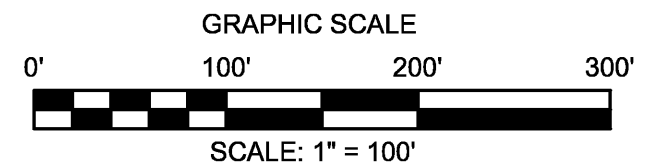
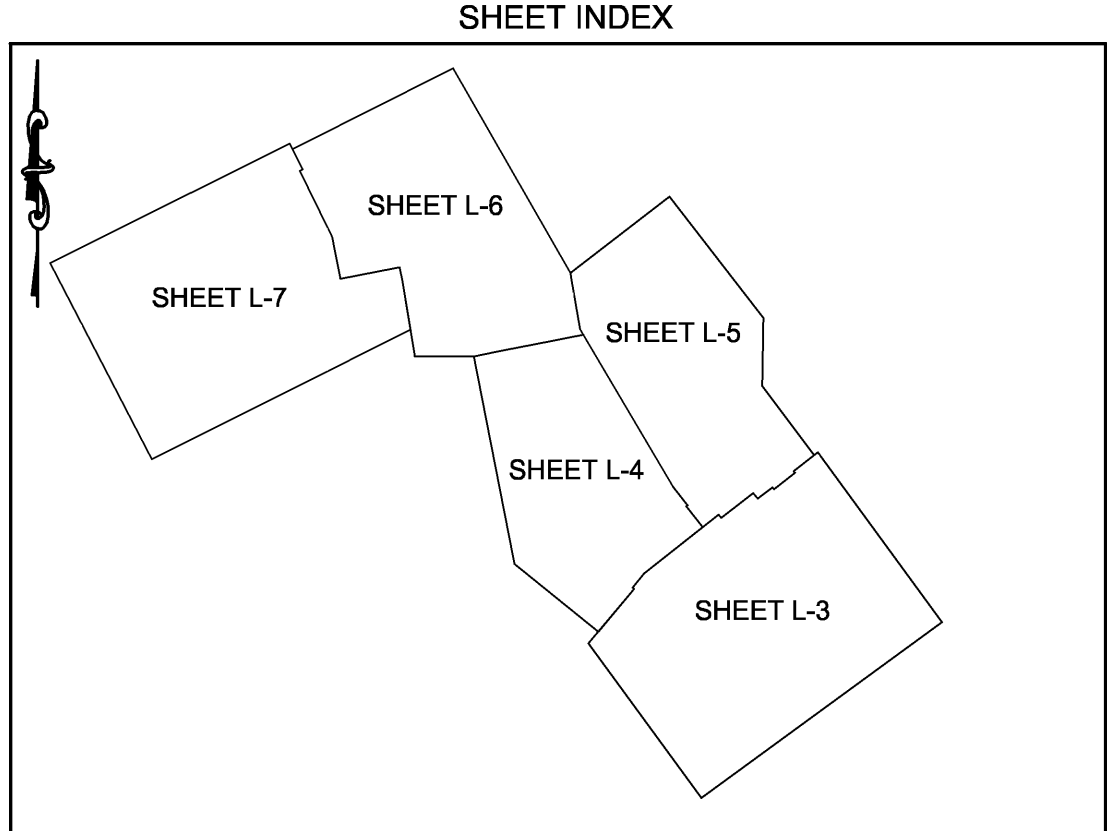
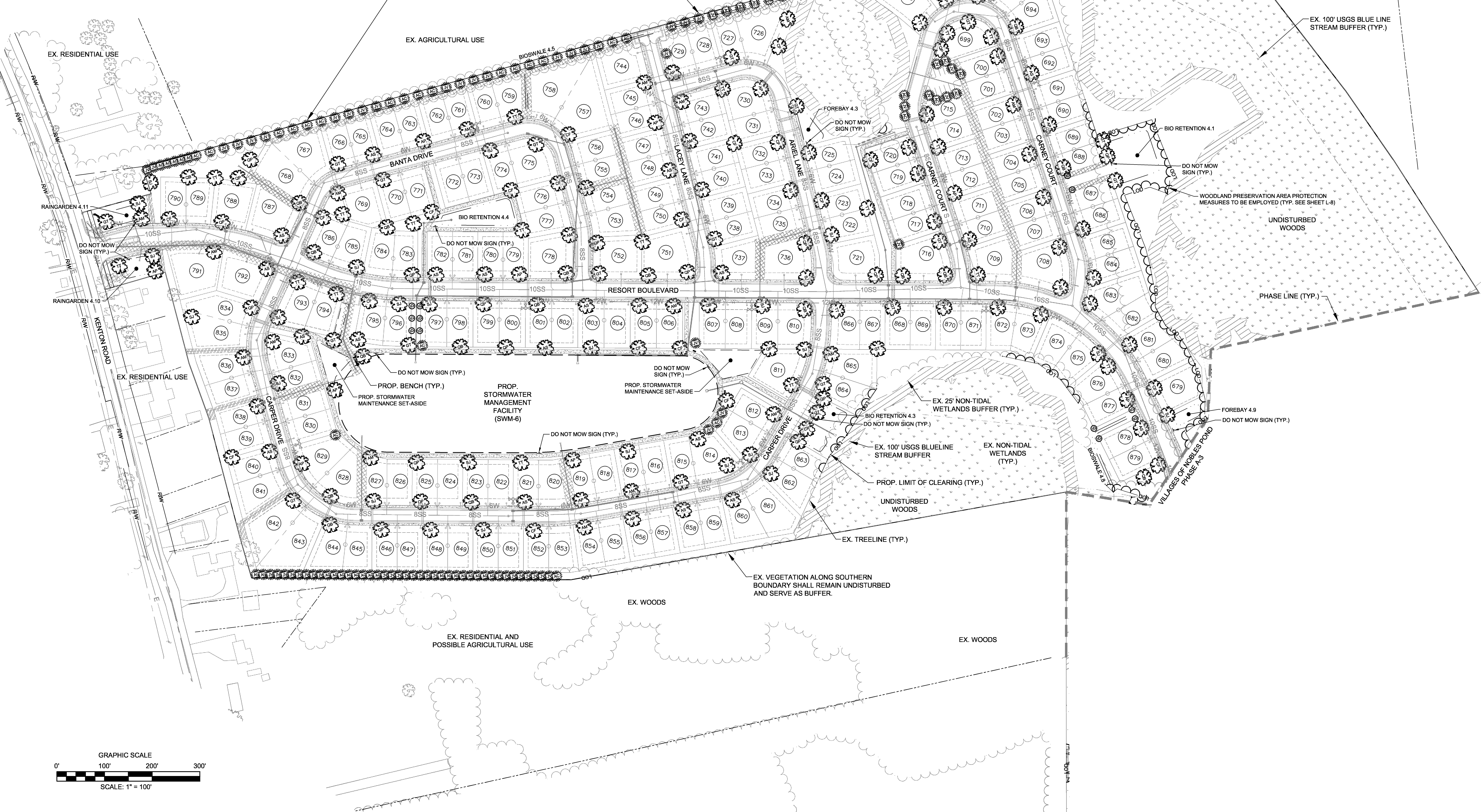
SYMBOL	QTY	COMMON NAME	BOTANICAL NAME	SIZE	ROOT	SPACING
AC	53	WHITE FIR	ABIES CONCOLOR	5-6"	BALLED & BURLAPPED	15'-30' O.C.
JV	58	EASTERN RED CEDAR	JUNIPERUS VIRGINIANA	5-6"	BALLED & BURLAPPED	10'-15' O.C.
IG	14	INKBERRY	ILEX GLABRA	3 GAL. CONT.		

(82 TREES PROPOSED FOR BUFFERARYARD)  
(14 TREES PROPOSED FOR SCREENING OF PARKING AREAS)

**NOTES:**

- ALL TREES SHALL HAVE A ONE YEAR REPLACEMENT GUARANTEE BY THE CONTRACTOR.
- TREES SPECIFIED HEREIN (OR APPROVED EQUIVALENTS) SHALL BE INSTALLED AS SHOWN ON THIS PLAN.
- 201 LOTS ARE PROPOSED IN PHASE 4A. PER RFP AGREEMENT, PROVIDE 1 TREE PER LOT; 201 TREES REQUIRED.
- 312 TOTAL TREES ARE PROPOSED IN PHASE 4A.
- WOODS CLEARING IN PHASE 4A: 14 AC.
- THE CLEARING LIMIT LINE SHALL BE ESTABLISHED ON THE PLAN AND SHALL BE INSPECTED AND APPROVED BY THE DEPARTMENT OF PLANNING SERVICES PRIOR TO ANY LAND DISTURBANCE ACTIVITY. THE DEVELOPER SHALL CONTACT PLANNING SERVICES TO ARRANGE PRE-CLEARING INSPECTION PRIOR TO ANY BUILDING PERMITS BEING ISSUED FOR PHASES 3A AND 4A.
- WITHIN ONE YEAR OF INITIAL CONSTRUCTION OF ALL STORMWATER MANAGEMENT FACILITIES, WETLAND AND LANDSCAPE PLANTINGS SHALL BE INSTALLED AND PERMANENT METALLIC SIGNAGE SHALL BE PLACED AT THE SWM DETENTION AREA INDICATING "WATER QUALITY MANAGEMENT AREA - DO NOT MOW".
- THE PROPOSED WALKING PATHS SHALL BE HARD SURFACED AND HANDICAPPED ACCESSIBLE.

PLANT BUFFER FIRS AND CEDARS AS NECESSARY TO SUPPLEMENT EX. TREE LINE TO PROVIDE OPAQUE BUFFER. DENSITY OF EX. TREELINE VARIES. ESTIMATE 3 PLANTINGS PER 100'. 1450/100' X 3 = 44 TREES REQUIRED. (49 PROVIDED.)



**REVISIONS**

REV. #	DATE	DESCRIPTION
1	DEC. 2013	ADDRESSING KENT COUNTY PLANNING COMMENTS

DATE	DESCRIPTION
FEBRUARY 2013	OVERALL LANDSCAPING PLAN - PHASE 4

**McCRONE**  
Celebrating 75 Years of Quality Services and Innovation

ENGINEERS ■ SURVEYORS ■ PLANNERS  
ANNAPOLIS ■ CENTREVILLE ■ ELKTON ■ SALISBURY ■ WILMINGTON

106 EAST MAIN STREET, SUITE 101  
ELKTON, MD 21921  
(410) 398-1250  
www.mccrone-inc.com  
Copyright © 2012

DATE:	FEBRUARY 2013
JOB NUMBER:	D3060182
SCALE:	1"=100'
DRAWN BY:	JMA
DESIGNED BY:	JMA
APPROVED BY:	DSS
FOLDER REFERENCE:	F-D3060182

OVERALL LANDSCAPING PLAN - PHASE 4

FILE NO. SL-11-01

**VILLAGES OF NOBLES POND  
PHASES 3A & 4A**

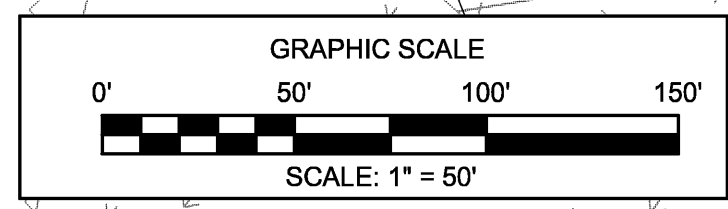
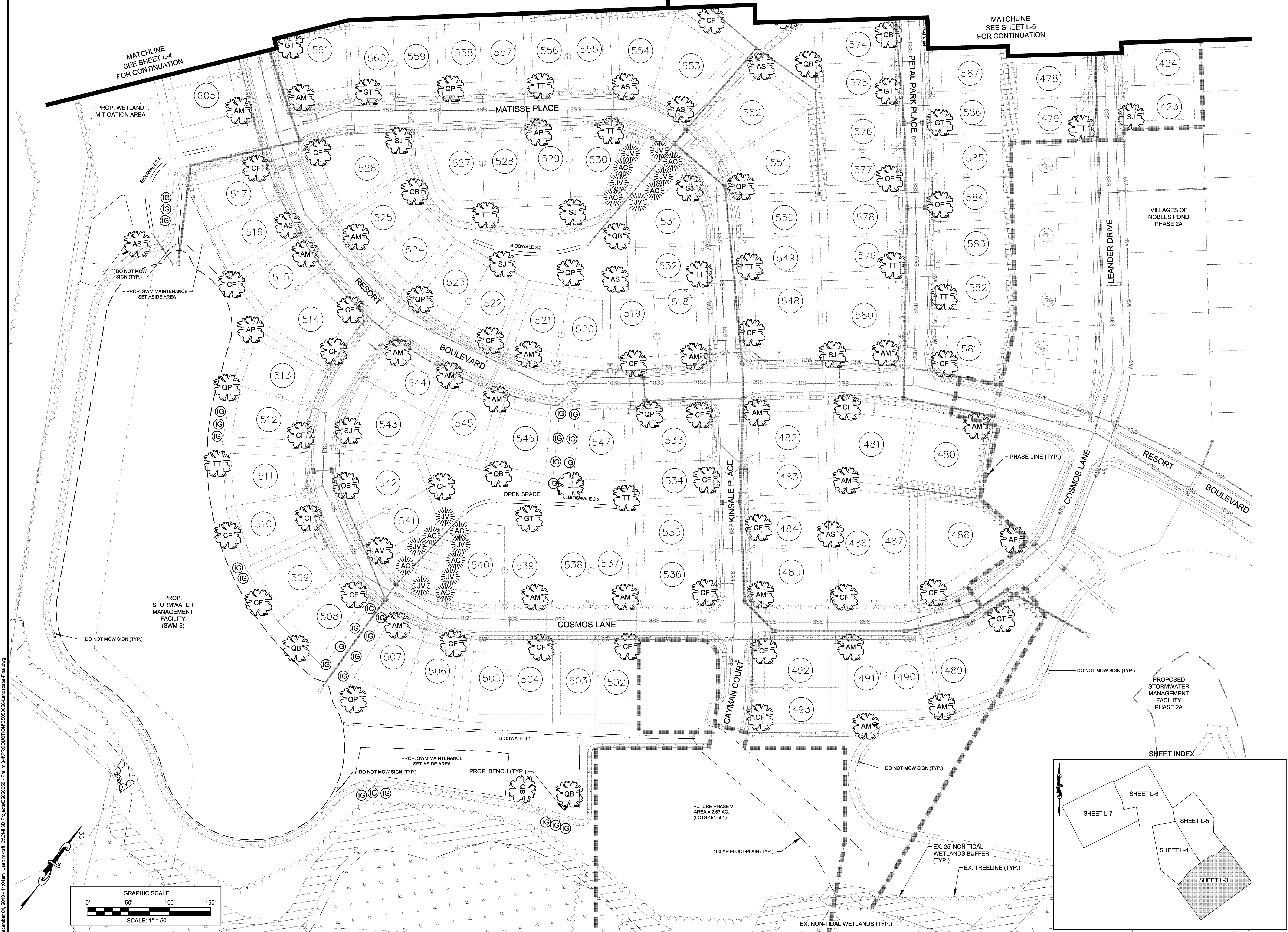
KENTON HUNDRED, KENT COUNTY, DELAWARE

FOR: EDDIE EVANS FARMS, LLC

SHEET NO.: **L-2**

FILE NO.: **1446-B**

December 04, 2013 - 11:23am User: mcrone C:\Civ\3D\Projects\120626066 - P\main\_3-APP\PRODUCTION\DWG\120626066\_Landscape-Final.dwg



REV. #	DATE	DESCRIPTION
1	DEC. 2013	ADDRESSING KENT COUNTY PLANNING COMMENTS

Celebrating 75 Years of Quality Service and Innovation  
**McCRONE**  
 ENGINEERS SURVEYORS PLANNERS  
 ANNAPOLIS CENTREVILLE ELKTON SALISBURY WILMINGTON  
 106 EAST MAIN STREET, SUITE 101  
 ELKTON, MD 21921  
 WWW.MCCRONE-INC.COM  
 Copyright © 2012

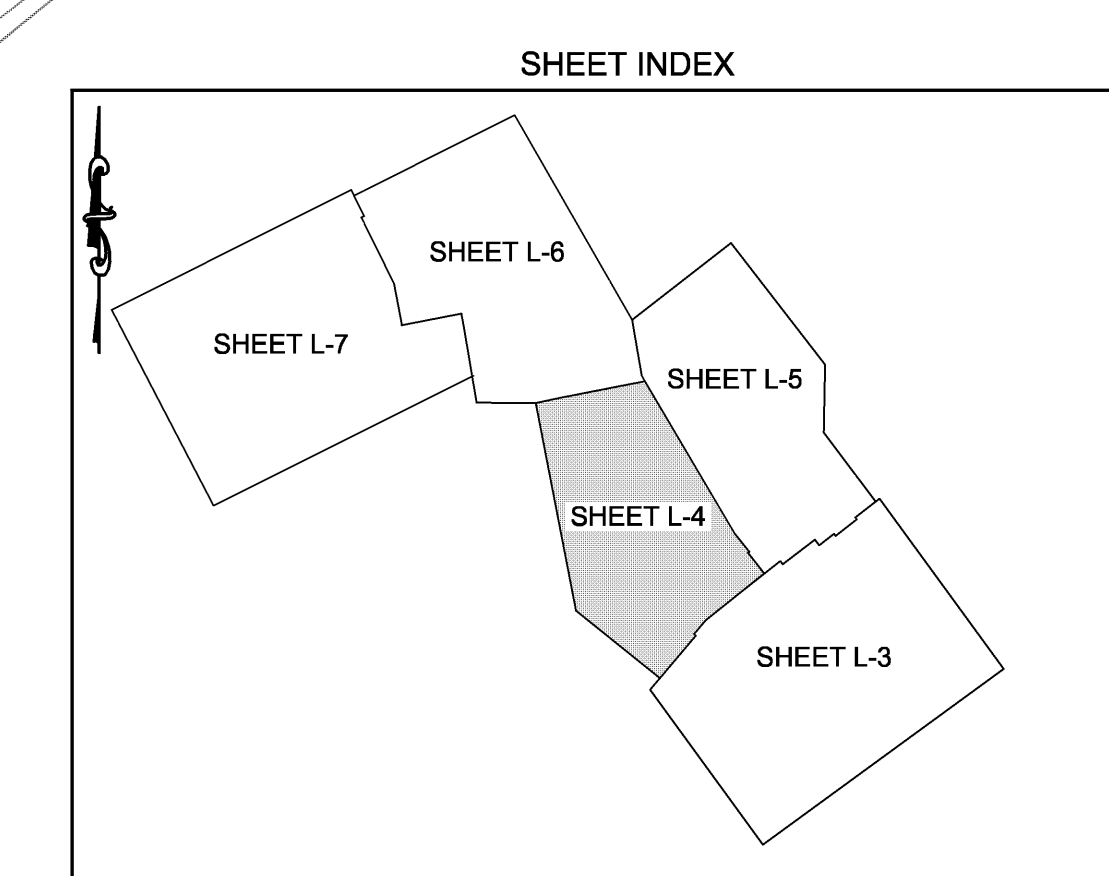
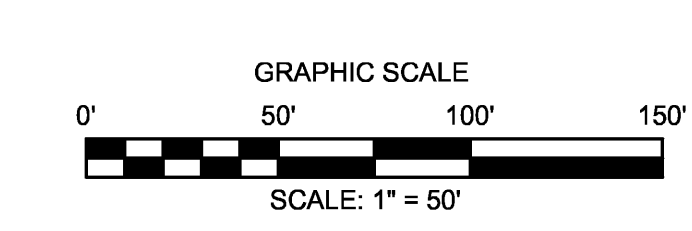
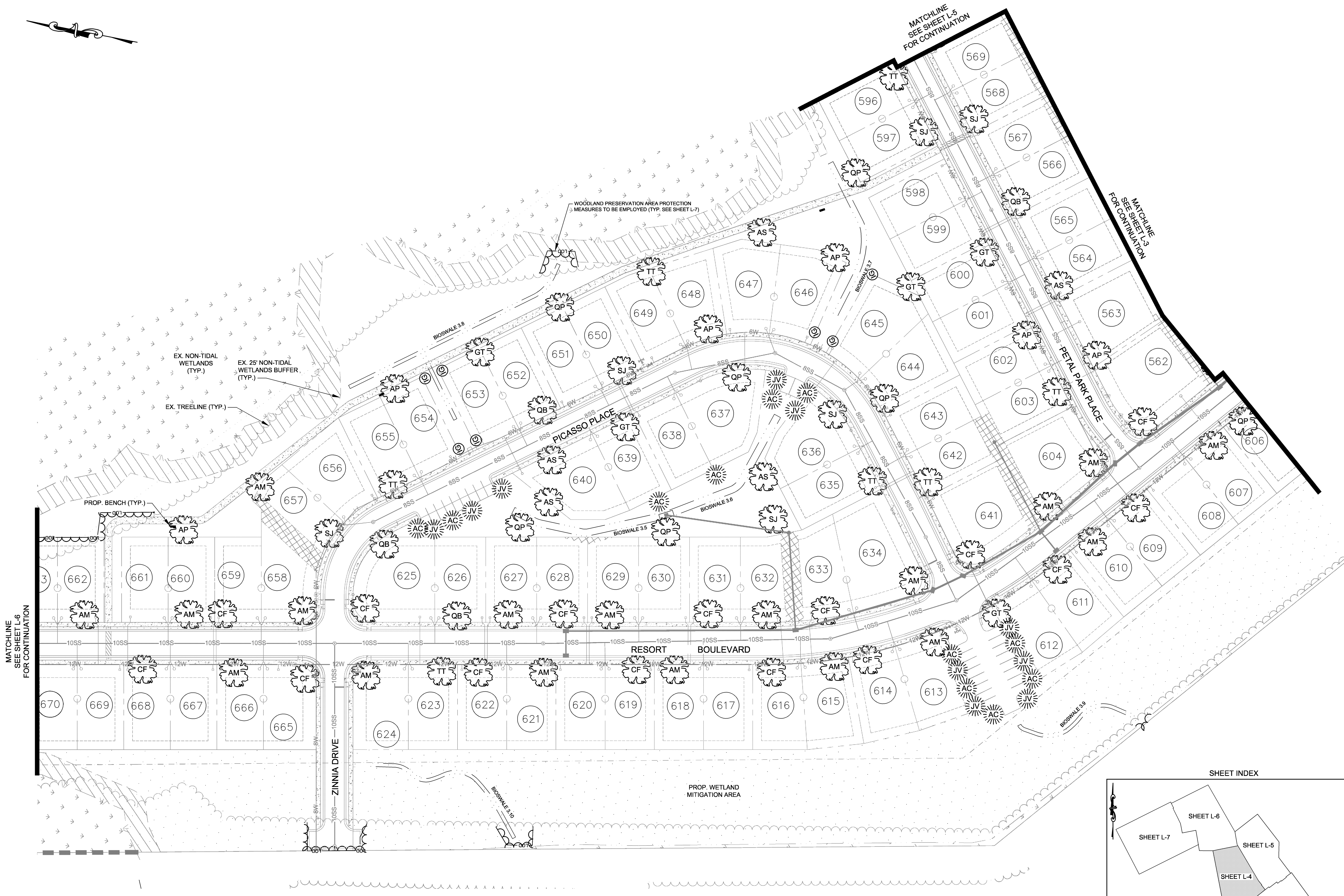
DATE:	FEBRUARY 2013
JOB NUMBER:	D390182
SCALE:	1"=50'
DRAWN BY:	JMA
DESIGNED BY:	JMA
APPROVED BY:	DSS
FOLDER REFERENCE:	F-D390182

FINAL LANDSCAPING PLAN  
 FILE NO. SL-11-01  
**VILLAGES OF NOBLES POND  
 PHASES 3A & 4A**  
 KENTON HUNDRED, KENT COUNTY, DELAWARE  
 FOR EDDIE EVANS FARMS, LLC

SHEET NO.: **L-3**  
 FILE NO.: 1446-B

December 04, 2013 - 11:04am User: merrill C:\csw\3D Projects\D390182\3D\3D\_Landscape\_Final.dwg

December 04, 2013 - 9:03am User: mraff C:\c\3D Projects\02650566 - P\m\1-4\PRODUCTION\02650566 - Landscape Final.dwg



REVISIONS	
REV. #	DESCRIPTION
1	ADDRESSING KENT COUNTY PLANNING COMMENTS
DATE	DEC. 2013

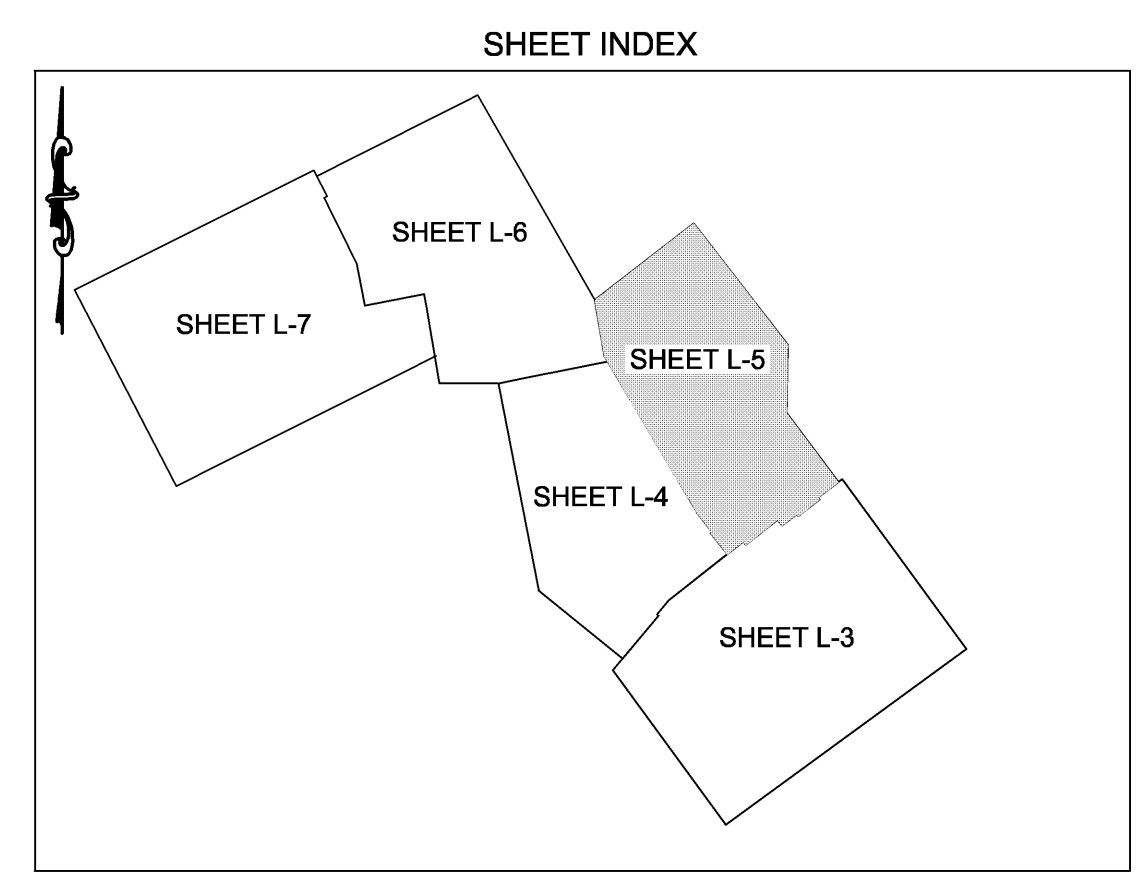
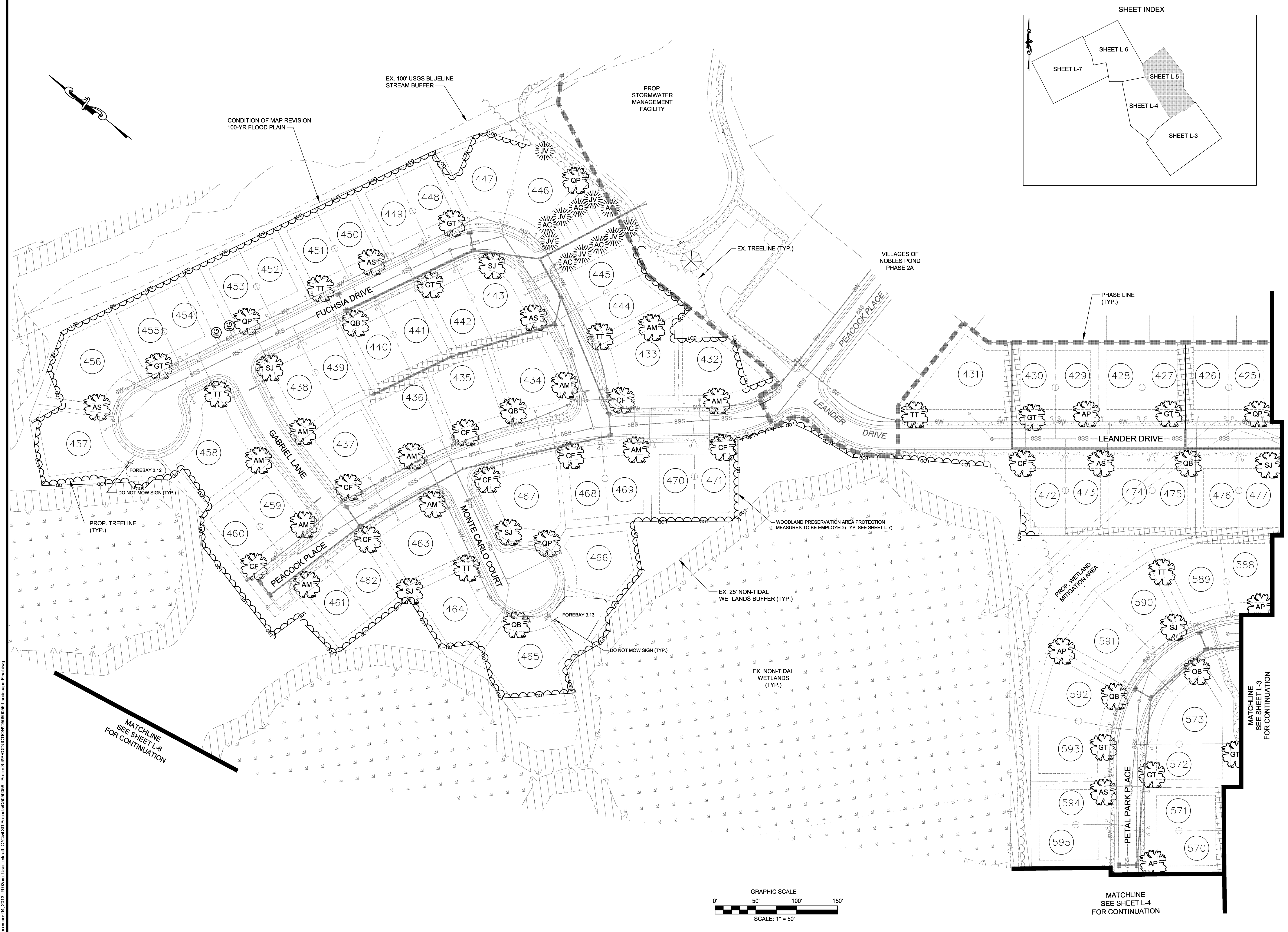
**McCRONE**
  
 Celebrating 75 Years of Quality Services and Innovation
   
 ENGINEERS ■ SURVEYORS ■ PLANNERS
   
 ANNAPOLIS ■ CENTREVILLE ■ ELKTON ■ SALISBURY ■ WILMINGTON
   
 106 EAST MAIN STREET, SUITE 101
   
 ELKTON, MD 21921
   
 (410) 398-1550
   
 www.mccrone-inc.com
   
 Copyright © 2012

DATE:	FEBRUARY 2013
JOB NUMBER:	D3090182
SCALE:	1"=50'
DRAWN BY:	JVA
DESIGNED BY:	JVA
APPROVED BY:	DSS
FOLDER REFERENCE:	F-D3090182

**FINAL LANDSCAPING PLAN**
  
 FILE NO. SL-11-01
   
**VILLAGES OF NOBLES POND**
  
**PHASES 3A & 4A**
  
 KENTON HUNDRED, KENT COUNTY, DELAWARE
   
 FOR: EDDIE EVANS FARMS, LLC

SHEET NO.: **L-4**
  
 FILE NO.: **1446-B**

SEAL \_\_\_\_\_
   
 DATE \_\_\_\_\_



REVISIONS	
REV. #	DESCRIPTION
1	ADDRESSING KENT COUNTY PLANNING COMMENTS
DATE	DEC. 2013

**McCRONE**
  
 ENGINEERS ■ SURVEYORS ■ PLANNERS
   
 ANNAPOLIS ■ CENTREVILLE ■ ELKTON ■ SALISBURY ■ WILMINGTON
   
106 EAST MAIN STREET, SUITE 101  
 ELKTON, MD 21921  
 (410) 398-1550  
 www.mccrone-inc.com

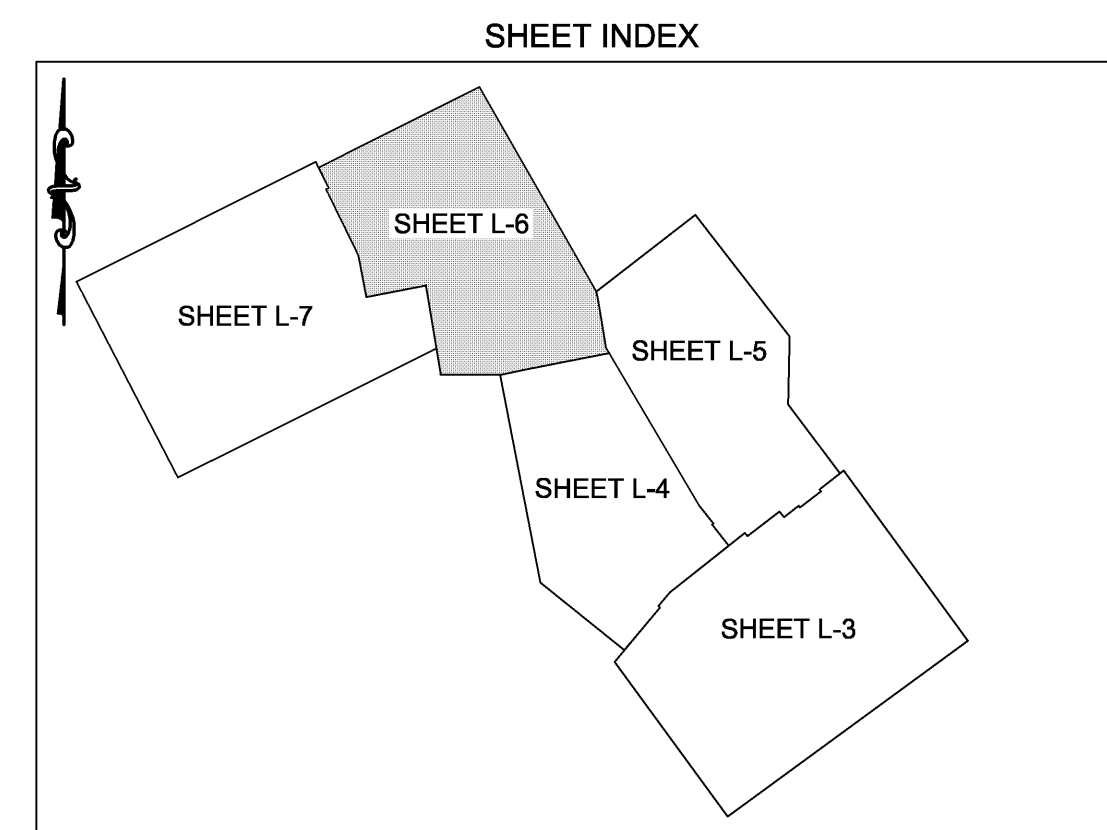
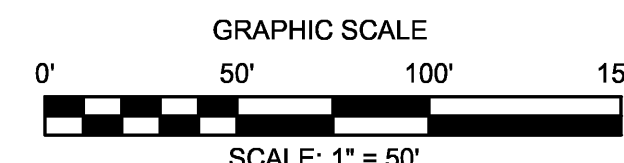
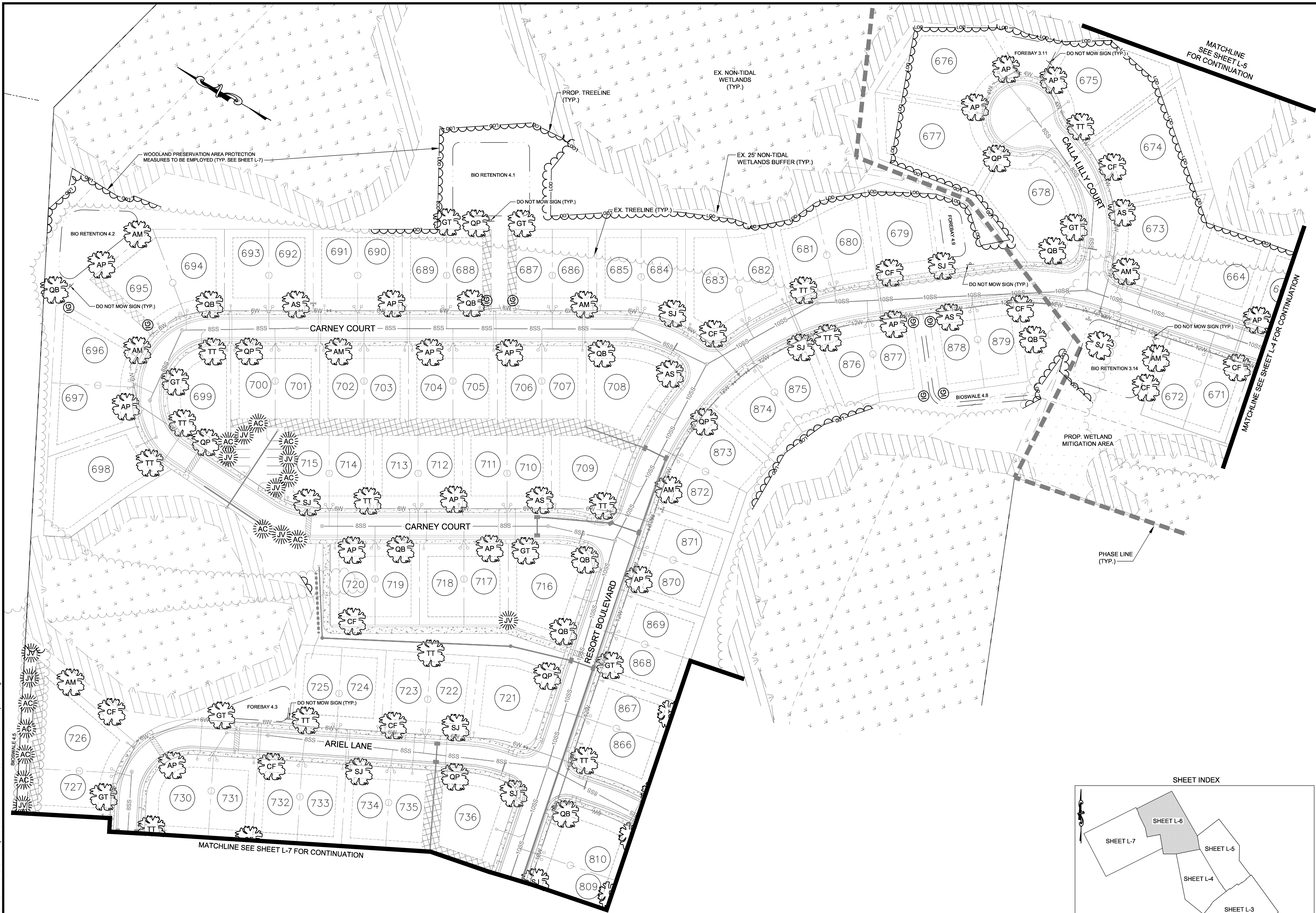
DATE:	FEBRUARY 2013
JOB NUMBER:	D3090182
SCALE:	1"=50'
DRAWN BY:	JVA
DESIGNED BY:	JVA
APPROVED BY:	DSS
FOLDER REFERENCE:	F-D3090182

**FINAL LANDSCAPING PLAN**  
 FILE NO. SL-11-01  
**VILLAGES OF NOBLES POND**  
**PHASES 3A & 4A**  
 KENTON HUNDRED, KENT COUNTY, DELAWARE  
 FOR: EDDIE EVANS FARMS, LLC

SHEET NO.: **L-5**  
 FILE NO.: **1446-B**

December 04, 2013 - 9:02am User: mearl C:\CS\3D Projects\02650656 - P\m\1-4\PRODUCTION\02650656\_Landscape\_Final.dwg

December 04, 2013 - 11:18am User: mairat C:\civ\CD Projects\12626266 - Prelim 3-APP\PRODUCTION\12626266.Landscape-Final.dwg



REVISIONS	
REV. #	DESCRIPTION
1	ADDRESSING KENT COUNTY PLANNING COMMENTS
DATE	DEC. 2013

**McCRONE**  
*Celebrating 75 Years of Quality Service and Innovation*  
 ENGINEERS ■ SURVEYORS ■ PLANNERS  
 ANNAPOLIS ■ CENTREVILLE ■ ELKTON ■ SALISBURY ■ WILMINGTON  
 106 EAST MAIN STREET, SUITE 101  
 ELKTON, MD 21921  
 www.mccrone-inc.com  
 Copyright © 2012

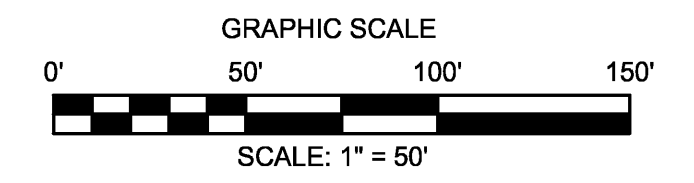
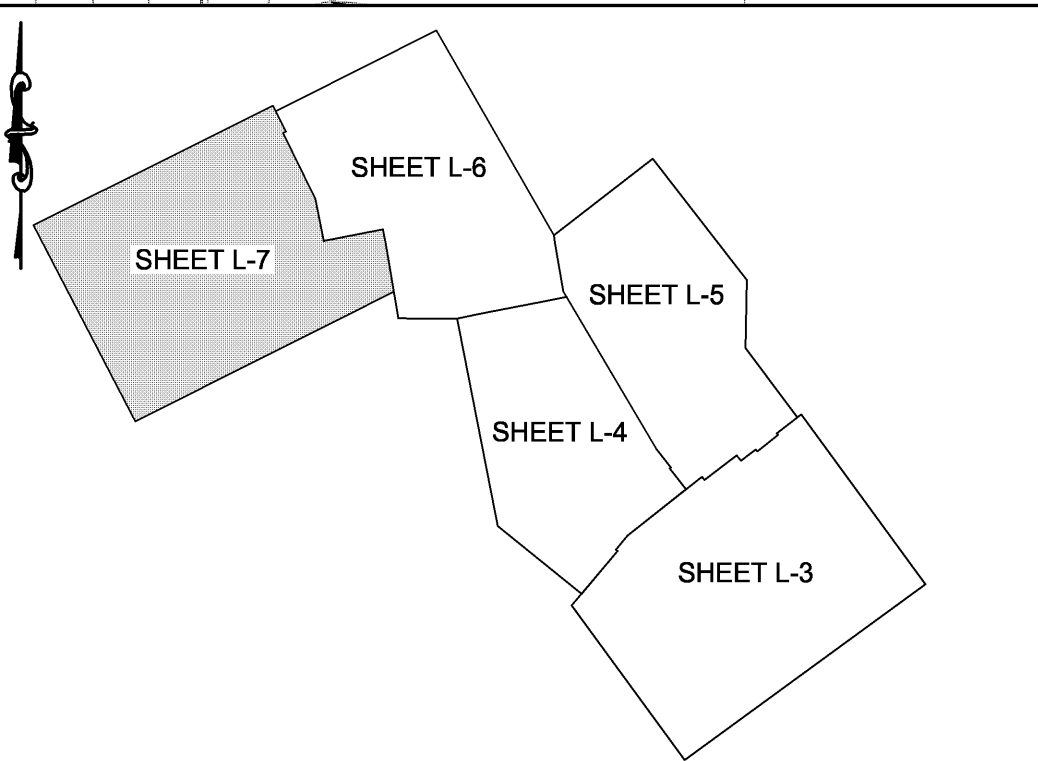
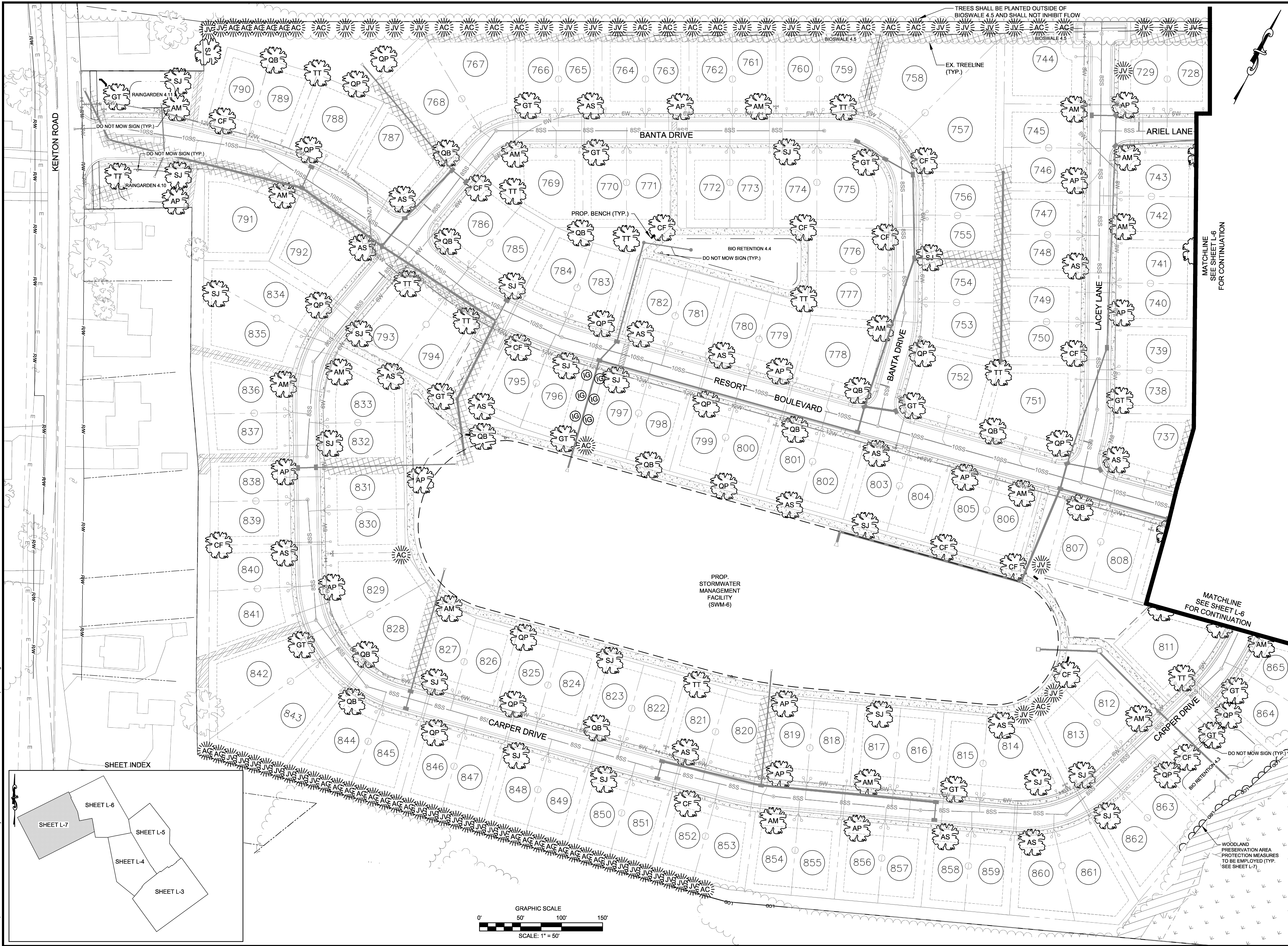
DATE:	FEBRUARY 2013
JOB NUMBER:	D3090182
SCALE:	1"=50'
DRAWN BY:	JVA
DESIGNED BY:	JVA
APPROVED BY:	DSS
FOLDER REFERENCE:	F-D3090182

**FINAL LANDSCAPING PLAN**  
 FILE NO. SL-11-01  
**VILLAGES OF NOBLES POND**  
**PHASES 3A & 4A**  
 KENTON HUNDRED, KENT COUNTY, DELAWARE  
 FOR: EDDIE EVANS FARMS, LLC

SHEET NO.: **L-6**  
 FILE NO.: **1446-B**

SEAL  
 DATE

December 04, 2013 - 11:24am User: mrcat C:\C:\DWG\PROJECTS\104656566 - Prelim 3-APP\PRODUCTION\104656566.Landscape-Final.dwg



MATCHLINE  
SEE SHEET L-6  
FOR CONTINUATION

MATCHLINE  
SEE SHEET L-6  
FOR CONTINUATION

WOODLAND  
PRESERVATION AREA  
PROTECTION MEASURES  
TO BE EMPLOYED (TYP.)  
SEE SHEET L-7)

REVISIONS	
REV. #	DESCRIPTION
1	ADDRESSING KENT COUNTY PLANNING COMMENTS
DATE	DEC. 2013

**McCRONE**  
*Celebrating 75 Years of Quality Services and Innovation*  
 ENGINEERS ■ SURVEYORS ■ PLANNERS  
 ANNAPOLIS ■ CENTREVILLE ■ ELKTON ■ SALISBURY ■ WILMINGTON  
 106 EAST MAIN STREET, SUITE 101  
 ELKTON, MD 21921  
 www.mccrone-inc.com  
 Copyright © 2012

DATE:	FEBRUARY 2013
JOB NUMBER:	D3090182
SCALE:	1"=50'
DRAWN BY:	JVA
DESIGNED BY:	JVA
APPROVED BY:	DSS
FOLDER REFERENCE:	F-D3090182

FINAL LANDSCAPING PLAN

FILE NO. SL-11-01

**VILLAGES OF NOBLES POND  
 PHASES 3A & 4A**

KENTON HUNDRED, KENT COUNTY, DELAWARE

FOR: EDDIE EVANS FARMS, LLC

SHEET NO.: **L-7**

FILE NO.: 1446-B

SEAL  
DATE