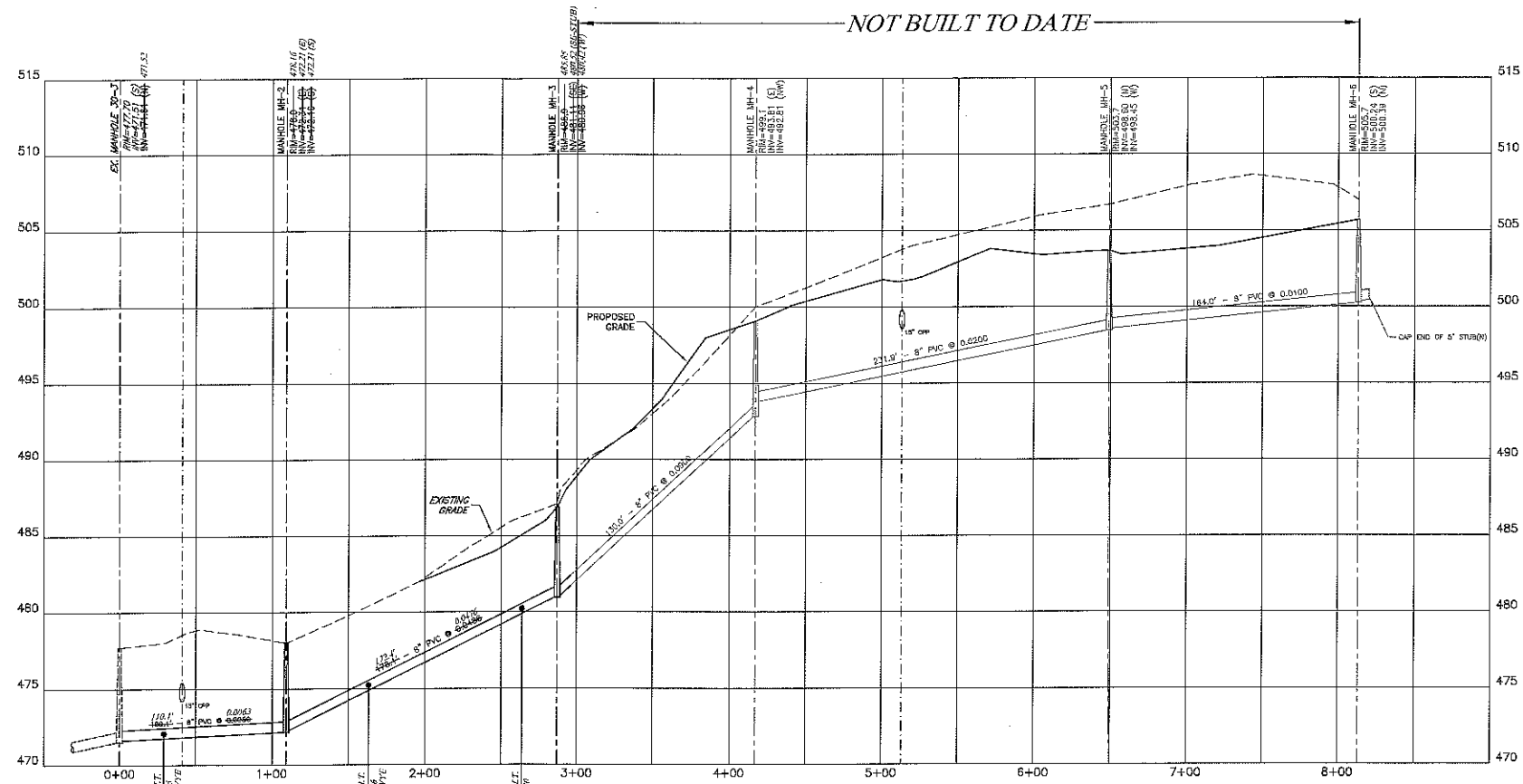


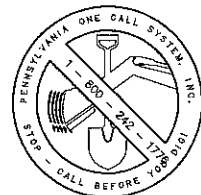
EX. MANHOLE TO MANHOLE MH-1

SCALE: HORIZ. 1"=50'
VERT. 1"=5'

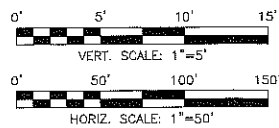


EX. MANHOLE TO MANHOLE MH-6

SCALE: HORIZ. 1"=50'
VERT. 1"=5'



PENNSYLVANIA ACT 187 REQUIRES NOTIFICATION OF EXCAVATORS DESIGNERS OR ANY PERSON PREPARING TO EXCAVATE THE EARTH'S SURFACE ADVANCE IN THE COMMONWEALTH.
SERIAL # 3381720 (DESIGN)



ENGINEER'S CERTIFICATION

I, MICHAEL J. KUKLES, A REGISTERED PROFESSIONAL ENGINEER IN THE COMMONWEALTH OF PENNSYLVANIA, DO HEREBY CERTIFY THAT THE SANITARY SEWER AND WATER SYSTEM AS-BUILT INFORMATION SHOWN ON THIS PLAN IS TRUE AND ACCURATELY DEPICTS THE IMPROVEMENTS CONSTRUCTED AS OF JUNE 1, 2007 TO THE BEST OF MY KNOWLEDGE AND BELIEF.

KEYSTONE CONSULTING ENGINEERS, INC.
BY MICHAEL J. KUKLES, P.E. (AZ026)

MICHAEL J. KUKLES, P.E. _____ DATE _____
PENNSYLVANIA REG. #082569

NOTE: ALL PLANS THAT DO NOT CONTAIN A RED INK OR CLAMP SEAL MAY HAVE BEEN UNAUTHORIZEDLY ALTERED. ALL INFORMATION SHOULD BE DISCOUNTED UNLESS VERIFIED BY THE SIGNATORY WHOSE NAME APPEARS ABOVE.

AS-BUILT

SANITARY SEWER PROFILES

FOR

BATH VIEW APARTMENTS

BOROUGH OF BATH, NORTHAMPTON COUNTY, PENNSYLVANIA



KEYSTONE CONSULTING ENGINEERS, INC.

433 EAST BROAD STREET, BETHLEHEM, PA 18018 610-865-4555
6235 HAMILTON BOULEVARD, WESCOSVILLE, PA 18106 610-395-0971

REVISIONS
BY DATE

DWG. NO. CB-06-112 AB

SCALE: AS NOTED

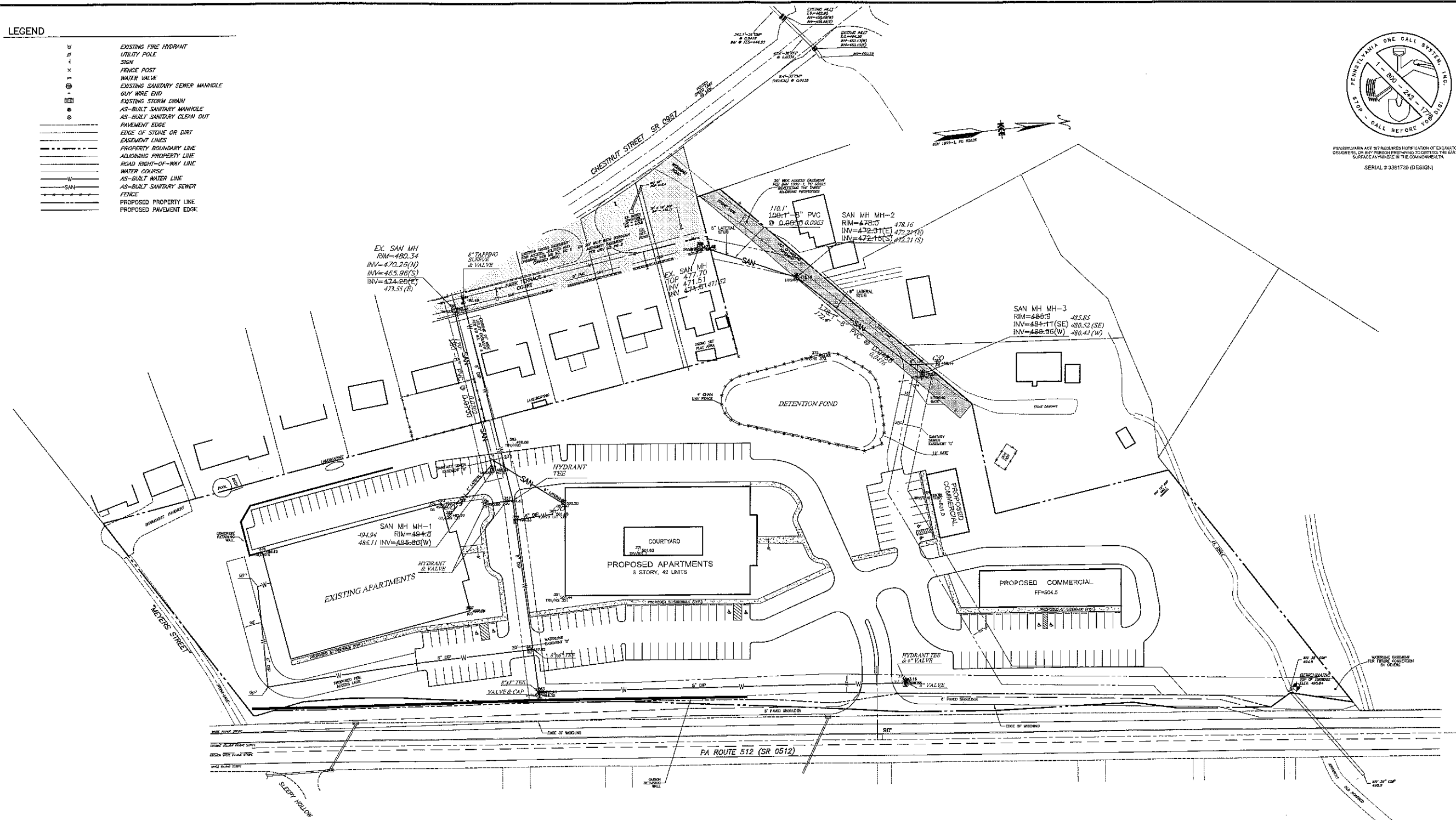
DWN. BY: MJK, KRS

DATE: JUNE 5, 2007

SHEET 2 OF 2

LEGEND

⊕	EXISTING FIRE HYDRANT
⊕	UTILITY POLE
⊕	SIGN
⊕	FENCE POST
⊕	WATER VALVE
⊕	EXISTING SANITARY SEWER MANHOLE
⊕	GUY WIRE END
⊕	EXISTING STORM DRAIN
⊕	AS-BUILT SANITARY MANHOLE
⊕	AS-BUILT SANITARY CLEAN OUT
⊕	PAVEMENT EDGE
⊕	EDGE OF STONE OR DIRT
⊕	EASEMENT LINES
⊕	PROPERTY BOUNDARY LINE
⊕	ADJOINING PROPERTY LINE
⊕	ROAD RIGHT-OF-WAY LINE
⊕	WATER COURSE
⊕	AS-BUILT WATER LINE
⊕	AS-BUILT SANITARY SEWER
⊕	FENCE
⊕	PROPOSED PROPERTY LINE
⊕	PROPOSED PAVEMENT EDGE



PENNSYLVANIA ACT OF REGULATORY INSTITUTION OF ENGINEERS, DESIGNERS, OR ANY PERSON PREPARING TO DISTURB THE EARTH'S SURFACE IN THE COMMONWEALTH. SERIAL # 3381720 (DESIGN)

- NOTES:**
- AS-BUILT DATA SHOWN ON THIS PLAN, EXCEPT AS NOTED BELOW, IS BASED ON A FIELD SURVEY RUN ON THE GROUND BY KEYSTONE CONSULTING ENGINEERS, INC. ON JUNE 1, 2007.
 - PROPERTY INFORMATION AND GENERAL LAYOUT WERE TAKEN FROM A PLAN ENTITLED "PRELIMINARY/FINAL LAND DEVELOPMENT PLAN FOR MONOCACY HEIGHTS, BOROUGH OF BATH, NORTHAMPTON COUNTY, PENNSYLVANIA" PREPARED BY KEYSTONE CONSULTING ENGINEERS, INC. AND LAST REVISED OCTOBER 3, 2005.
 - BENCHMARK DATUM BASED ON SPOT ELEVATION OF 481 FEET AS SHOWN ON THE USGS CATAWAQUA QUADRANGLE AT THE INTERSECTION OF SR 0512 AND SLEEPY HOLLOW ROAD.
 - AS-BUILT WATER SYSTEM INFORMATION SHOWN HEREON WAS OBTAINED FROM CONSTRUCTION RECORDS PROVIDED TO KEYSTONE CONSULTING ENGINEERS, INC. BY SCHLOUGH, INC.; ONLY ABOVE GROUND FEATURES HAVE BEEN FIELD VERIFIED BY KEYSTONE CONSULTING ENGINEERS, INC.
 - AS-BUILT LATERAL WYE STATIONS AND INVERTS SHOWN HEREON WERE TAKEN FROM RECORDS PROVIDED BY SCHLOUGH, INC.; ONLY ABOVE GROUND FEATURES HAVE BEEN FIELD VERIFIED BY KEYSTONE CONSULTING ENGINEERS, INC.
 - SEE SHEET 2 OF 2 FOR AS-BUILT SANITARY SEWER PROFILES FOR THE RUNS COMPLETED AS OF JUNE 1, 2007.

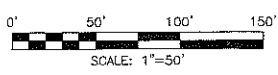
ENGINEER'S CERTIFICATION

I, MICHAEL J. KUKLES, A REGISTERED PROFESSIONAL ENGINEER IN THE COMMONWEALTH OF PENNSYLVANIA, DO HEREBY CERTIFY THAT THE SANITARY SEWER AND WATER SYSTEM AS-BUILT INFORMATION SHOWN ON THIS PLAN IS TRUE AND CORRECT AND ACCURATELY REFLECTS THE IMPROVEMENTS CONSTRUCTED AS OF JUNE 1, 2007 TO THE BEST OF MY KNOWLEDGE AND BELIEF.

KEYSTONE CONSULTING ENGINEERS, INC.
BY: MICHAEL J. KUKLES, P.E. (4062589)

MICHAEL J. KUKLES, P.E.
PENNSYLVANIA REG. #4062589

NOTE: ALL PLANS THAT DO NOT CONTAIN A RED INK OR CRIMP SEAL MAY HAVE BEEN FRAUDULENTLY ALTERED. ALL INFORMATION SHOULD BE ENCOUNTERED UNLESS VERIFIED BY THE SIGNATORY WHOSE NAME APPEARS ABOVE.



KEYSTONE CONSULTING ENGINEERS, INC.
433 EAST BROAD STREET, BETHLEHEM, PA 18018 610-865-4555
6235 HAMILTON BOULEVARD, WESCOSVILLE, PA 18106 610-395-0971



UTILITY PLAN
FOR
BATH VIEW APARTMENTS
LOCATED IN
BOROUGH OF BATH, NORTHAMPTON COUNTY, PENNSYLVANIA

DWG. NO.	CB-06-112 AB
SCALE:	1" = 50'
DWN. BY:	MJK, KRS
DATE:	JUNE 6, 2007
SHEET	1 OF 2