

February 2009

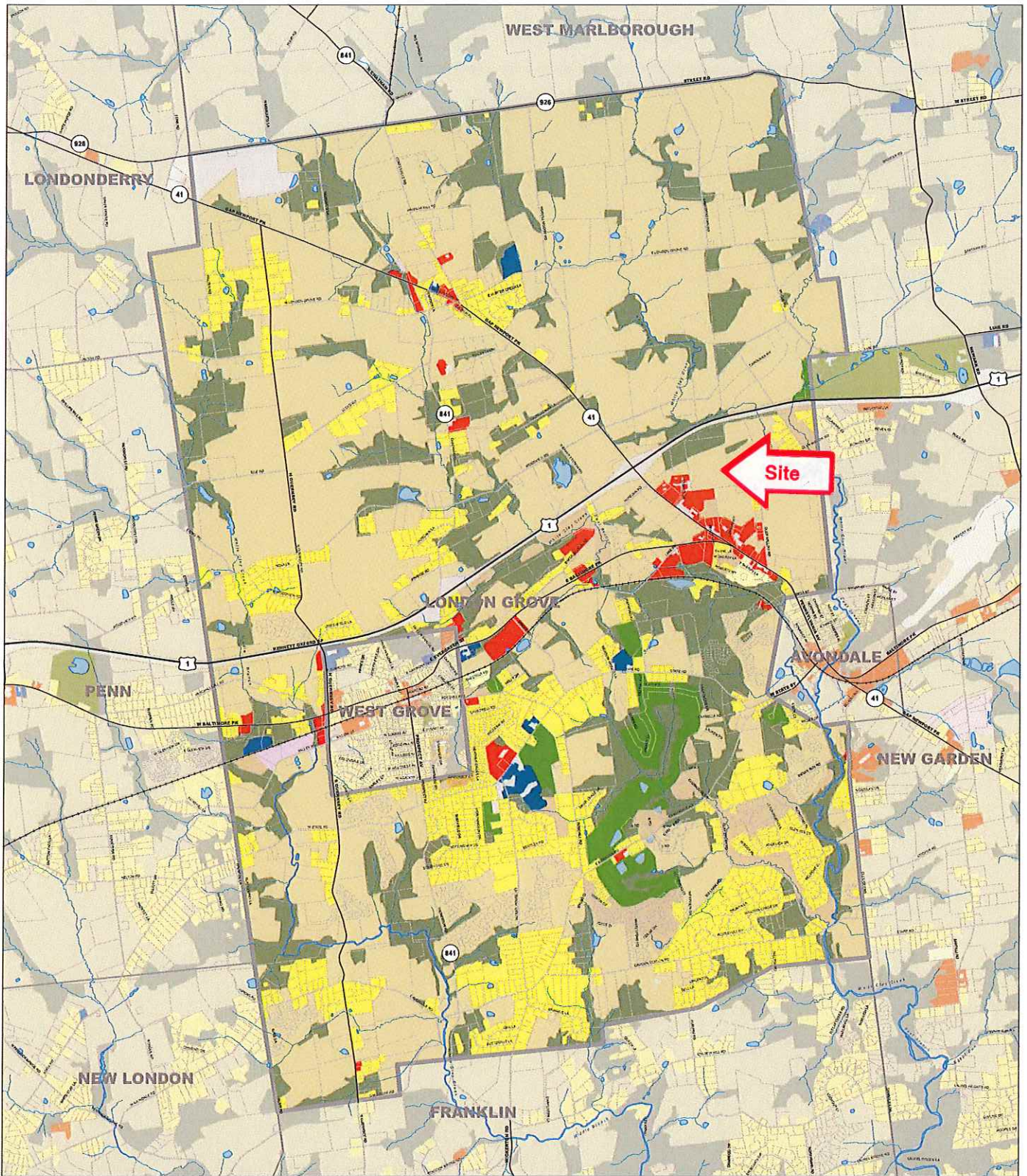
London Grove Township Comprehensive Plan EXISTING LAND USE

Study Area	Institutional	Residential-Single Family Detached
Agricultural	Mixed Use	Residential-Single Family Attached
Agricultural/Industrial	Golf Course	Residential-Multi-Family
Cemetery	Open Space	Residential (Unspecified)
Commercial	Recreational	Transportation; Utilities
Industrial	Carriaging	Other
Landfill	Residential-Mobile Home	Commercial (Under Construction)



0 900 1,800 3,600 Feet

Figure 2.2.1



January 2007

London Grove Township Comprehensive Plan

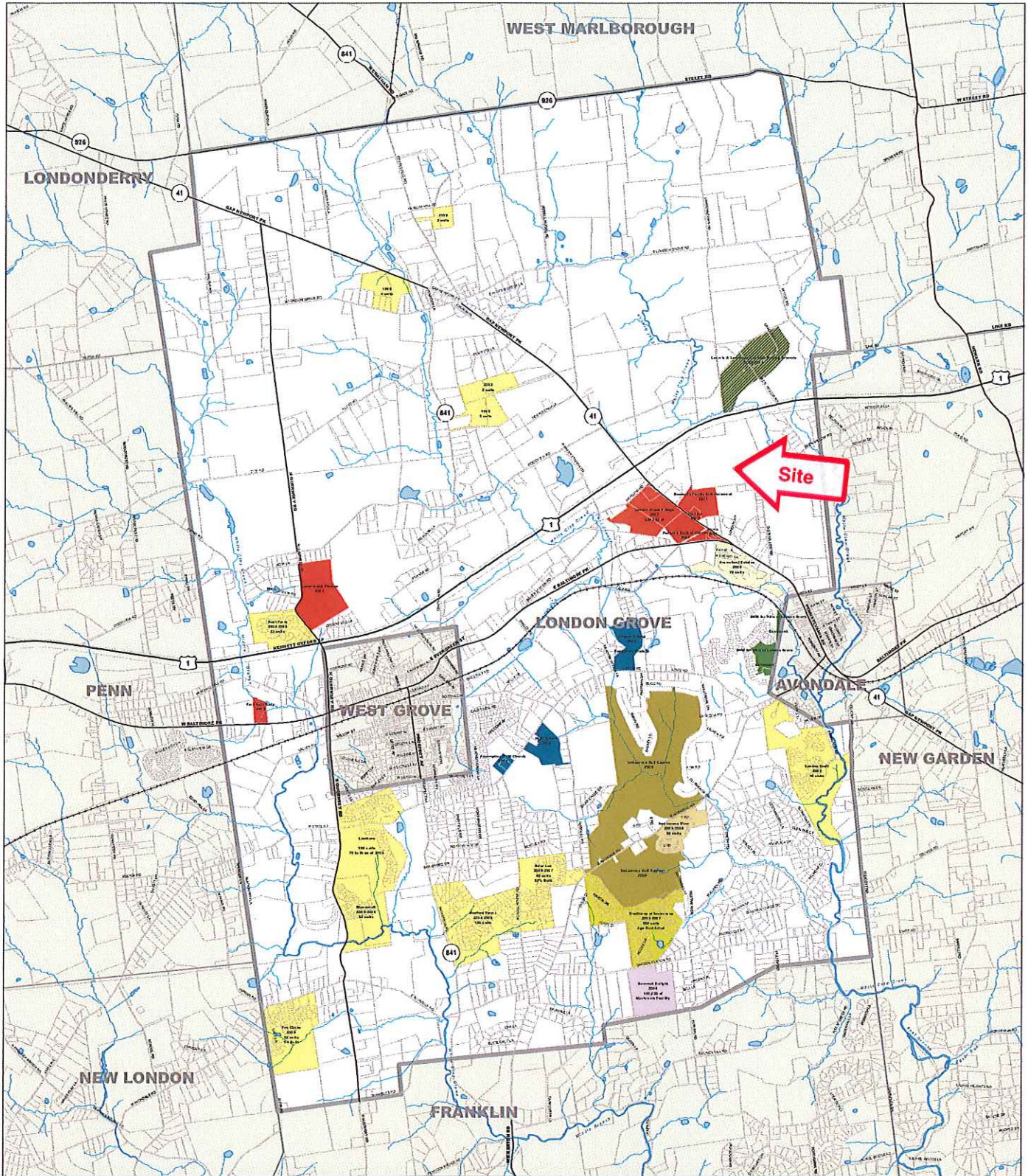
LAND COVER: 2000

- | | | | |
|--|-------------------------------------|--|----------------------------|
| | Study Area | | Residential: Multi-Family |
| | Agriculture | | Residential: Mobile Home |
| | Commercial | | Transportation / Utilities |
| | Community Services | | Vacant |
| | Manufacturing: Light Industrial | | Water |
| | Recreation | | Wooded |
| | Residential: Single-Family Detached | | |



0 900 1,800 3,600 Feet

Figure 2.2.2



March 2007

**London Grove Township
Comprehensive Plan
RECENT DEVELOPMENT
1999 TO PRESENT**

- Study Area
- Agricultural/Industrial
- Commercial
- Golf Course
- Institutional
- Open Space
- Carriage Racing
- Residential-Age Restricted
- Residential-Mobile Home
- Residential-Single Family Attached
- Residential-Single Family Detached

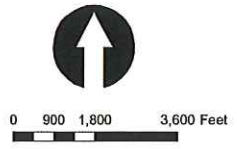
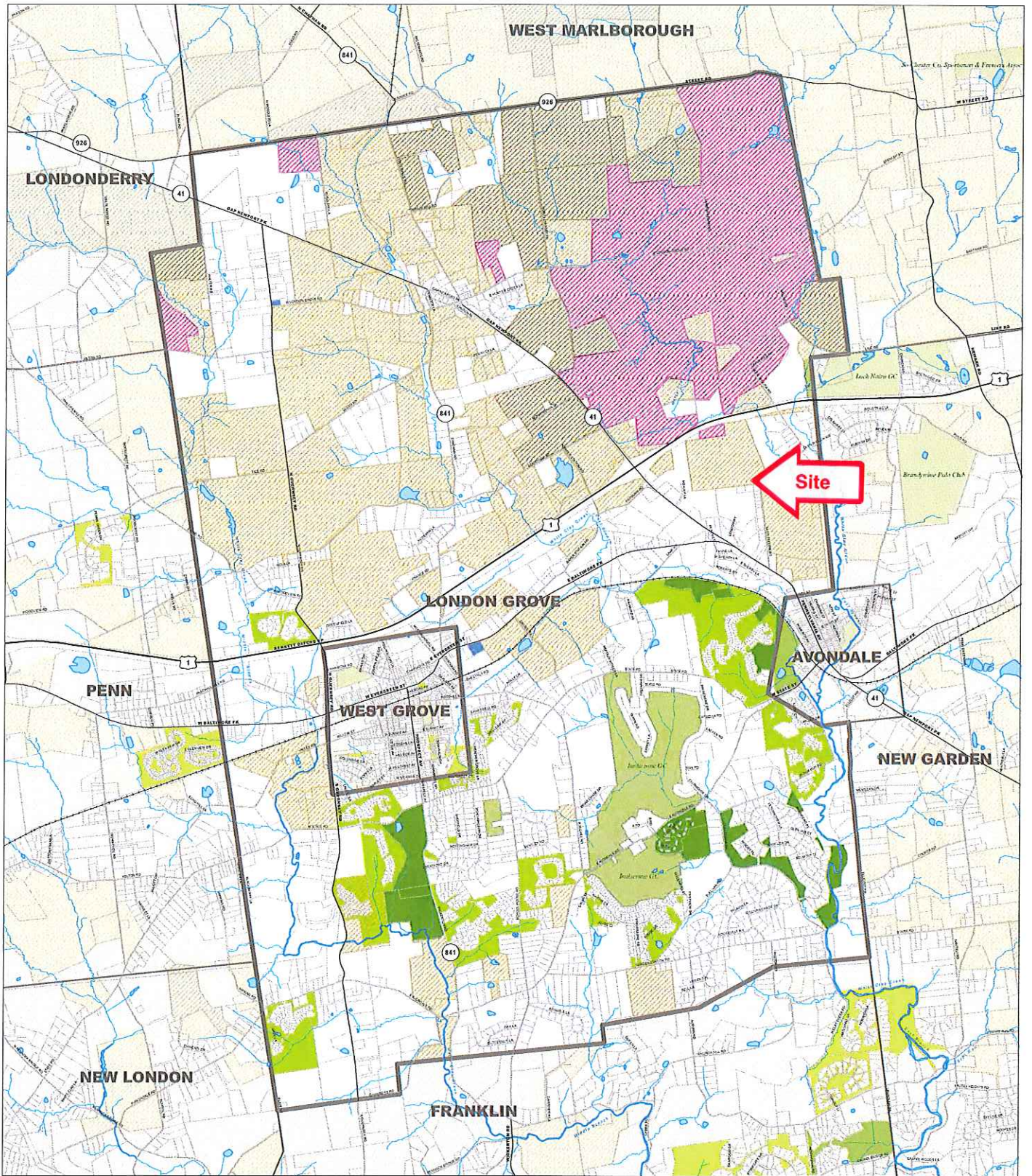


Figure 2.3.1



October 2009

London Grove Township Comprehensive Plan LAND PRESERVATION

- | | |
|--------------------|----------------------------------|
| Study Area | Home Owners Association Parcels |
| Parks / Recreation | Agricultural Easements |
| Open Space | Agricultural Security Areas |
| Cemeteries | Parcels with LandTrust Easements |

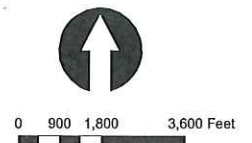
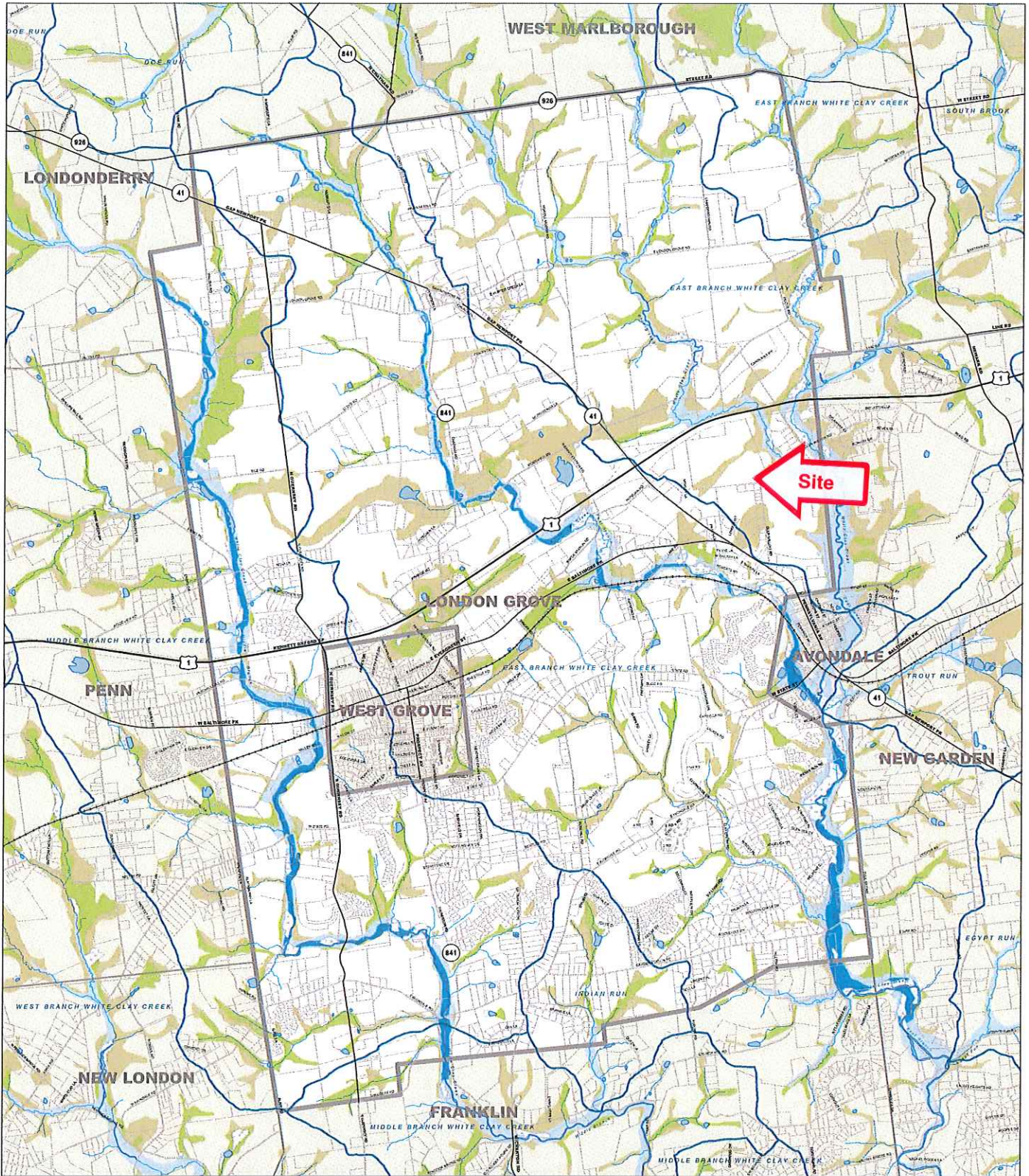


Figure 2.4.1



February 2007

London Grove Township Comprehensive Plan HYDROLOGY

- Study Area
- Rivers & Streams
- Lakes
- Wetlands
- 100 yr Floodplain
- Hydric Soils
- Hydric Soil Inclusions
- Floodway
- Watersheds

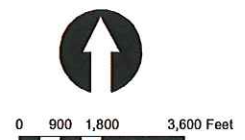
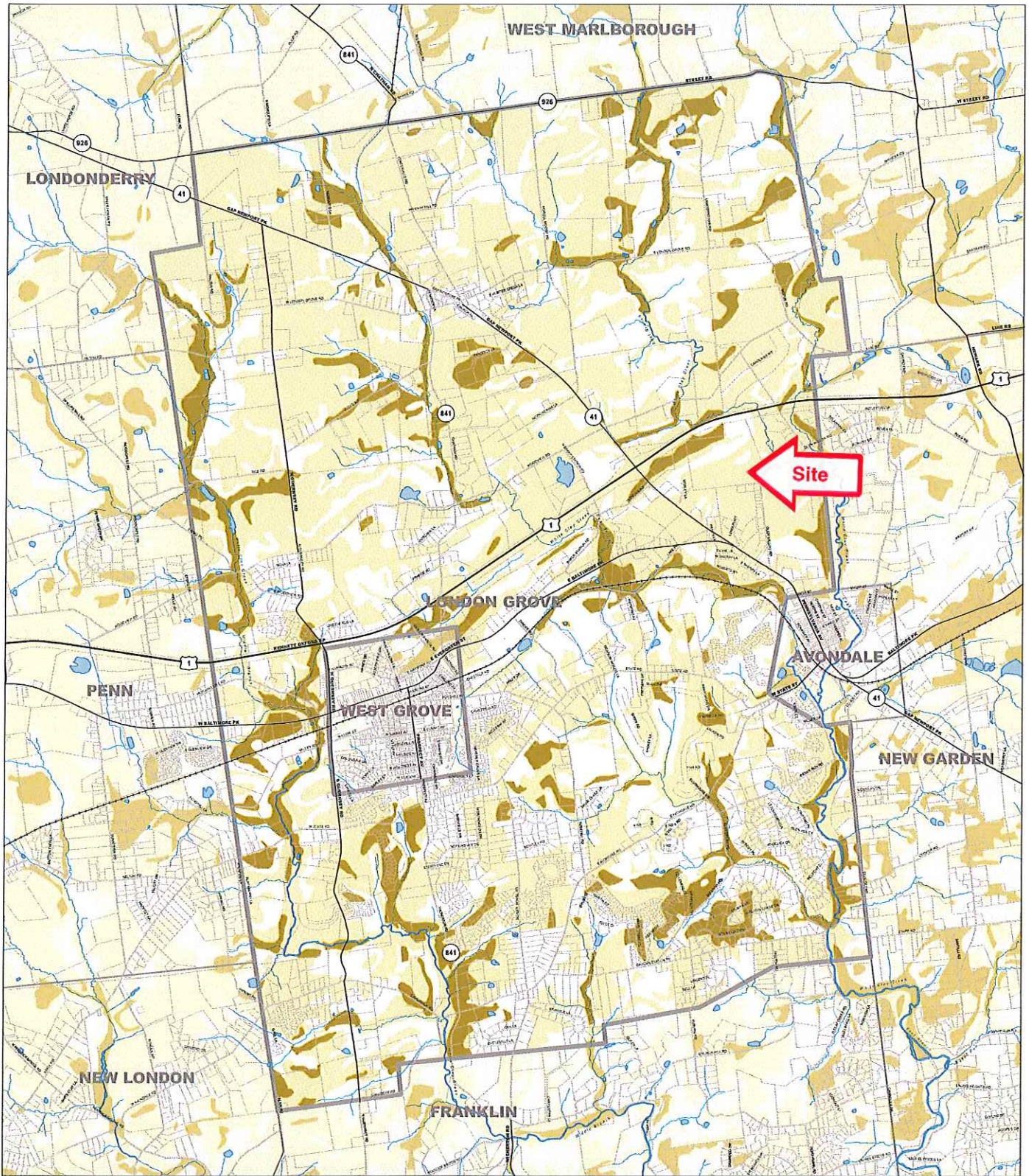


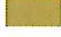


Figure 2.4.2



January 2007

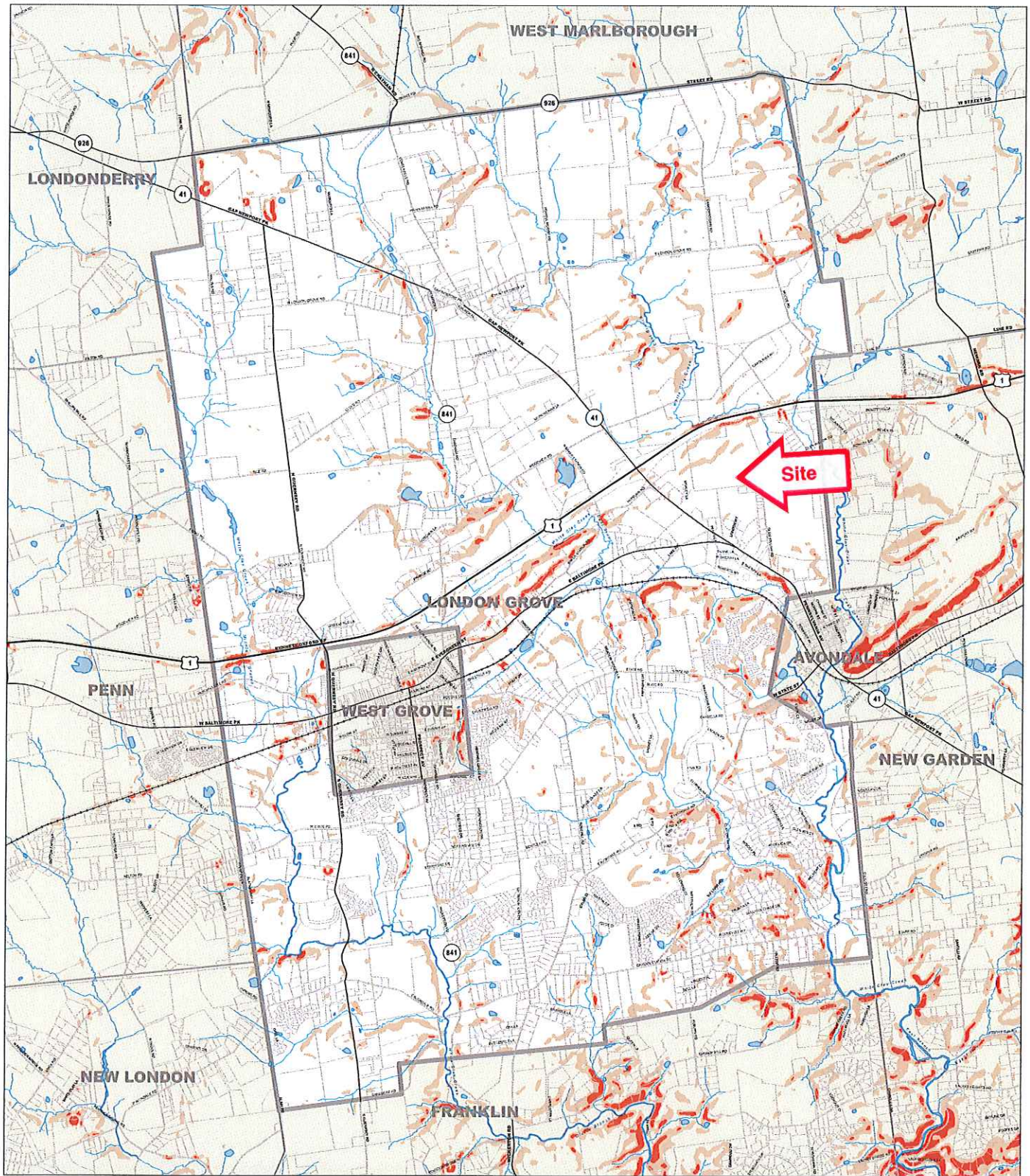
London Grove Township Comprehensive Plan AGRICULTURAL SOILS

-  Study Area
-  Prime Agricultural Farmland Soils
-  Agricultural Capability Class 1, 2 and 3 Soils






0 900 1,800 3,600 Feet

Figure 2.4.3



January 2007

London Grove Township Comprehensive Plan STEEP SLOPE

-  Study Area
-  Areas of Very Steep Slope (> 25%)
-  Areas of Moderate Slope (15 to 25%)

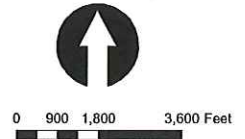
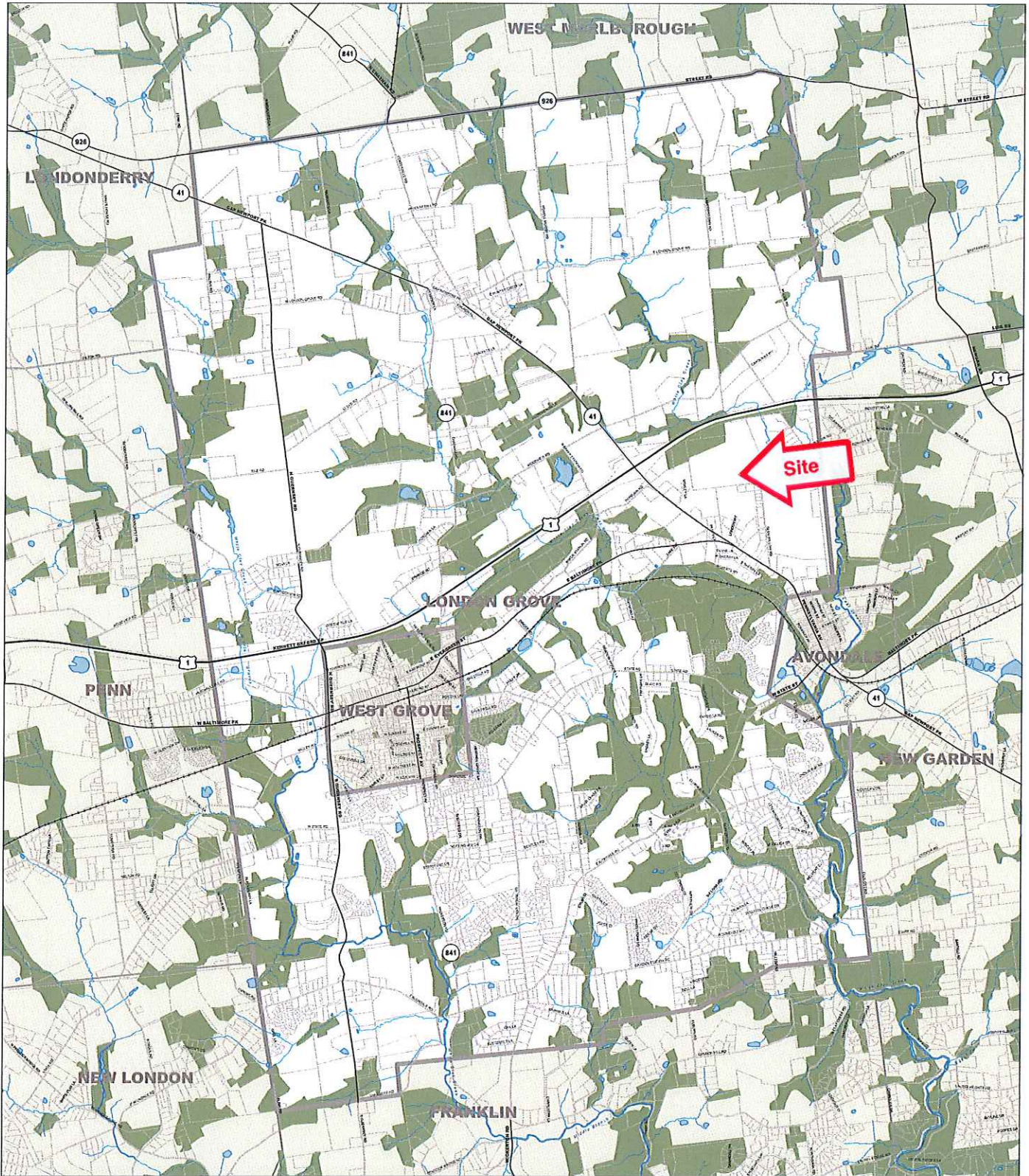




Figure 2.4.4



January 2007

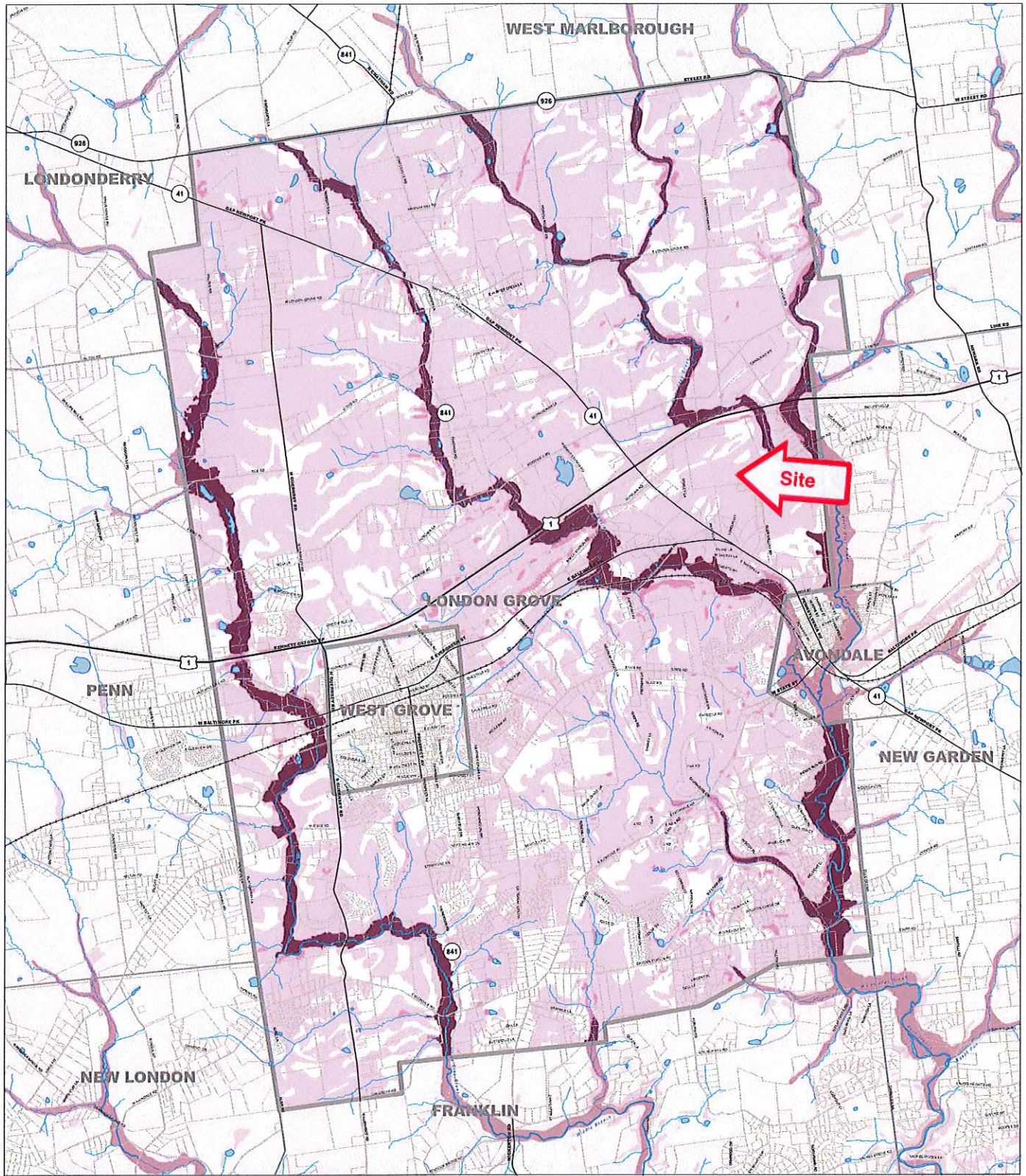
London Grove Township Comprehensive Plan WOODLANDS

-  Study Area
-  Woodlands



0 900 1,800 3,600 Feet

Figure 2.4.5



March 2007

London Grove Township Comprehensive Plan COMPOSITE CONSTRAINTS

-  Study Area
-  Level 1: 100 yr Floodplain
-  Level 2: Wetlands & Steep Slopes (> 25%)
-  Level 3: Hydric Soils, Moderate Slopes (15 to 25%), Prime Farmland & Woodlands
-  Level 4: Slight

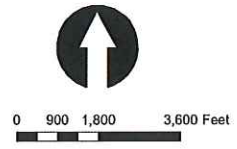
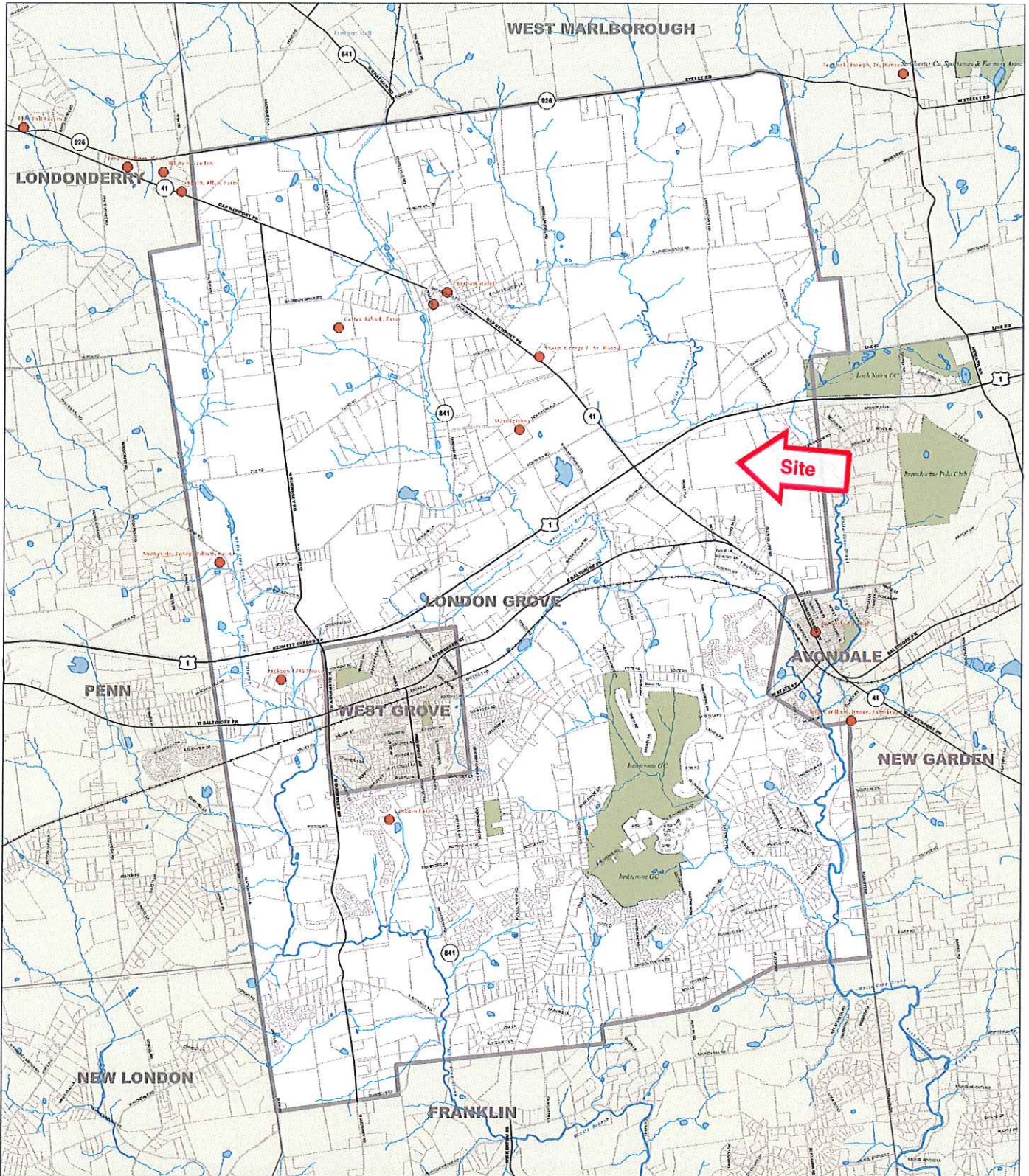


Figure 2.4.6



February 2007

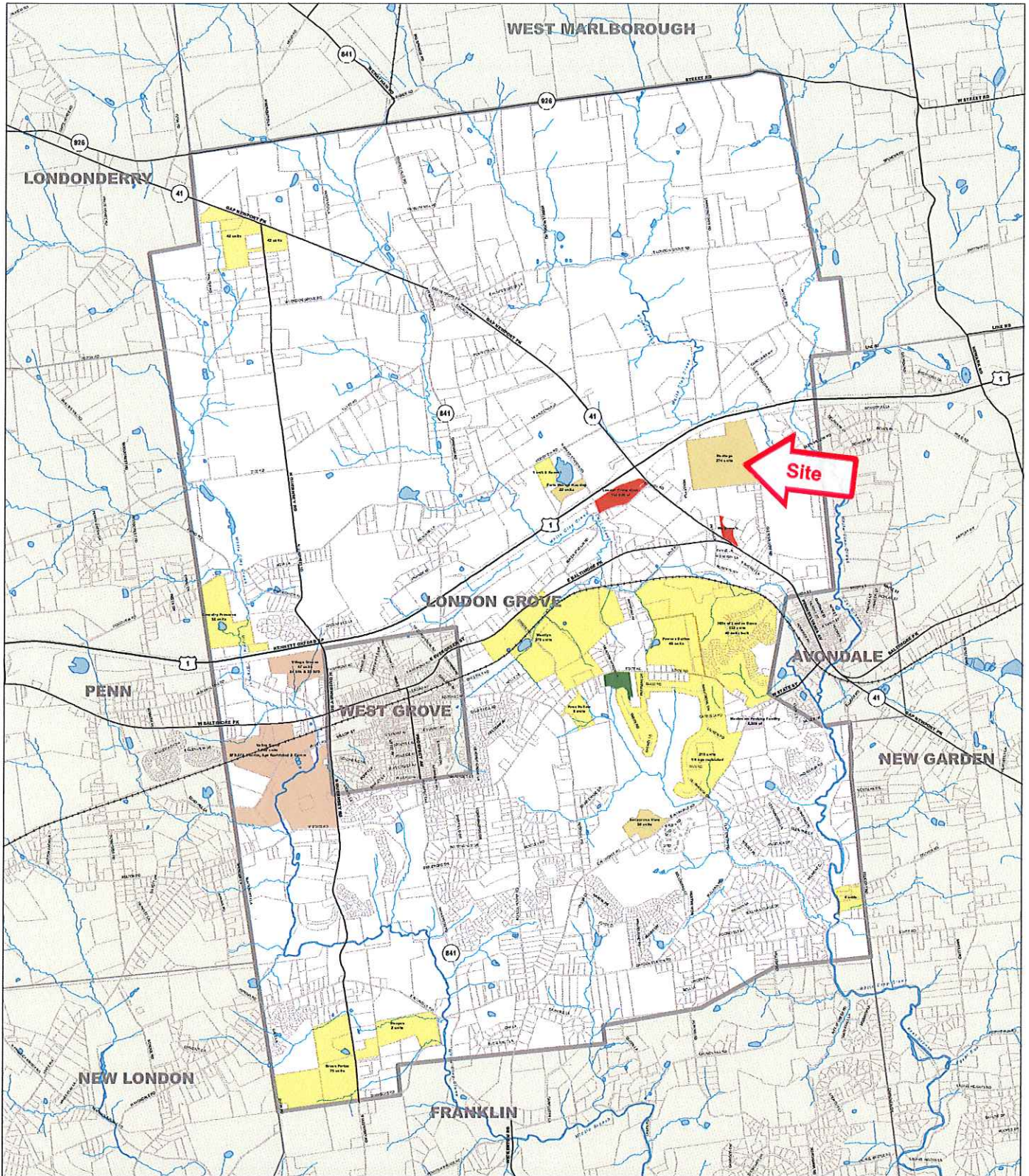
London Grove Township Comprehensive Plan HISTORIC RESOURCES

-  Study Area
-  National Register Eligible



0 900 1,800 3,600 Feet

Figure 2.5.1



April 2007

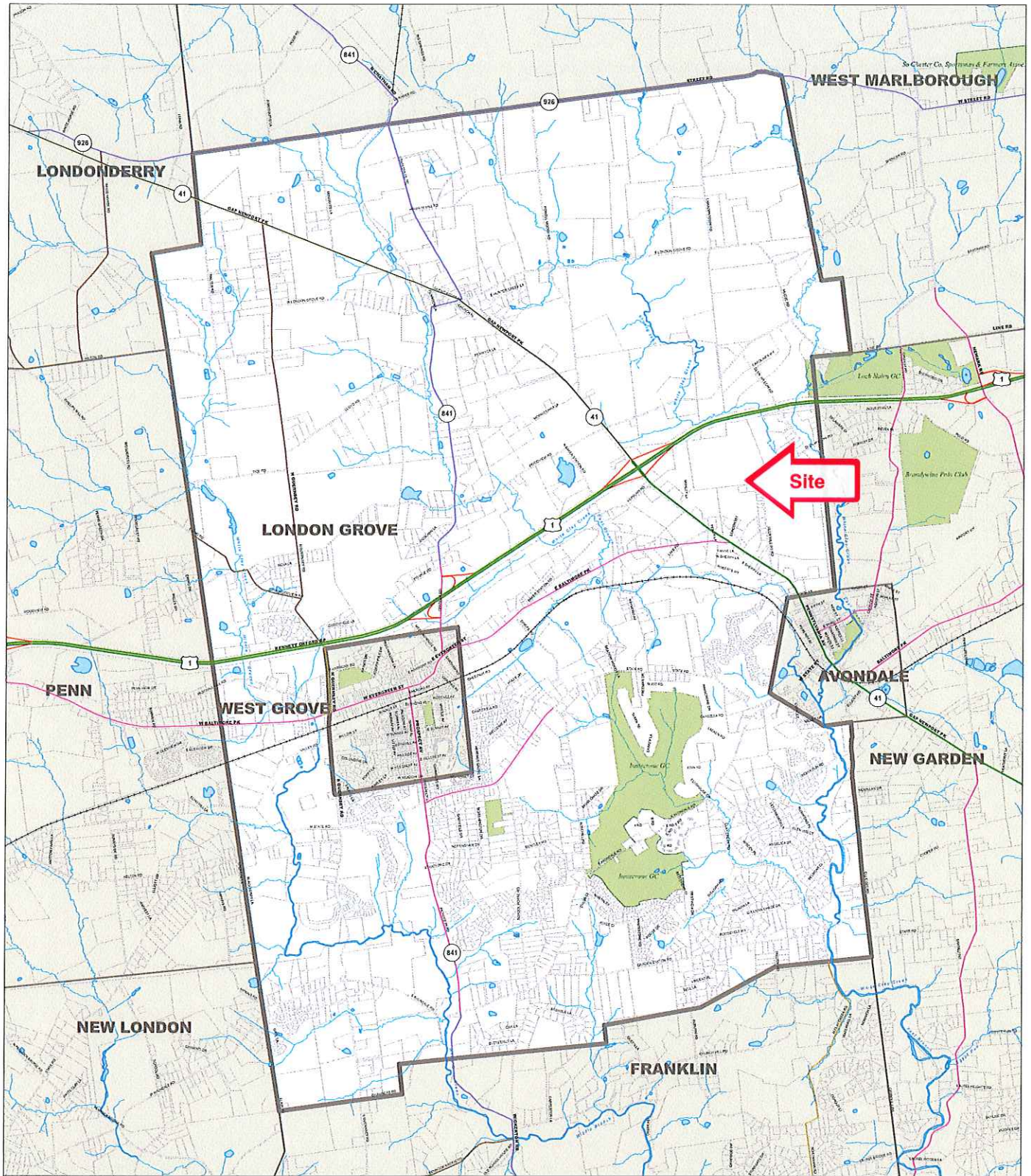
London Grove Township Comprehensive Plan PENDING & PROPOSED DEVELOPMENT

- Study Area
- Agricultural/Industrial
- Commercial
- Mixed Use
- Open Space
- Residential-Single Family Attached
- Residential-Single Family Detached



0 900 1,800 3,600 Feet

Figure 2.7.1



August 2007

London Grove Township Comprehensive Plan ROADWAY FUNCTIONAL CLASSIFICATION

- Study Area
- Rural Principal Arterial-Other
- Urban Other Principal Arterial
- Urban Minor Arterial
- Rural Major Collector
- Rural Minor Collector
- Urban Collector
- Rural Local
- Urban Local
- Ramp
- Railroads

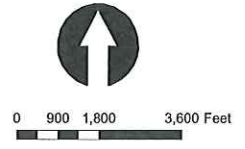
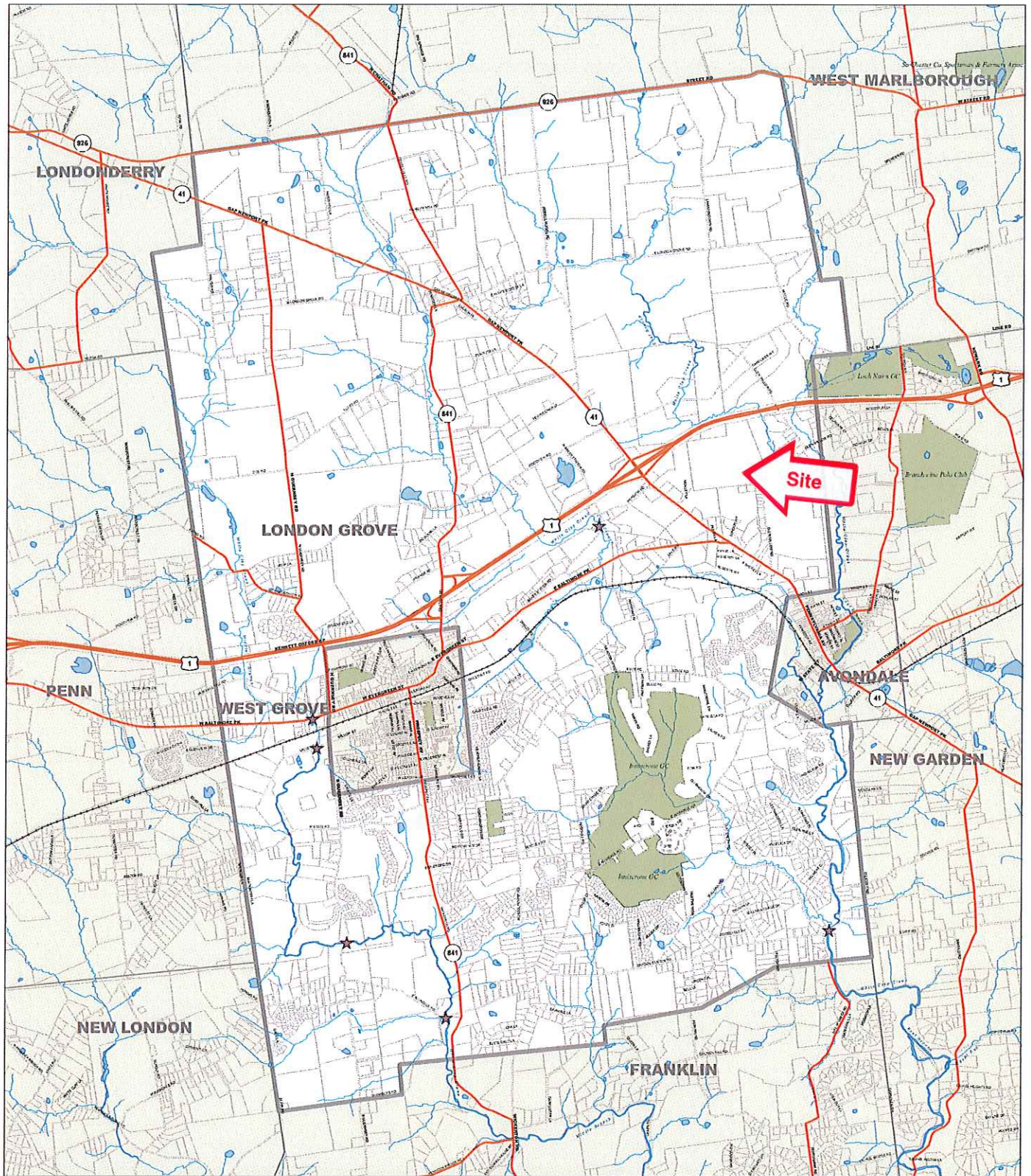


Figure 2.8.1



April 2007

**London Grove Township
Comprehensive Plan
ROADWAY JURISDICTIONAL
CLASSIFICATION**

-  Study Area
-  State Roads
-  Railroads
-  County-Owned Bridges

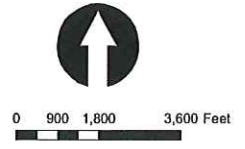
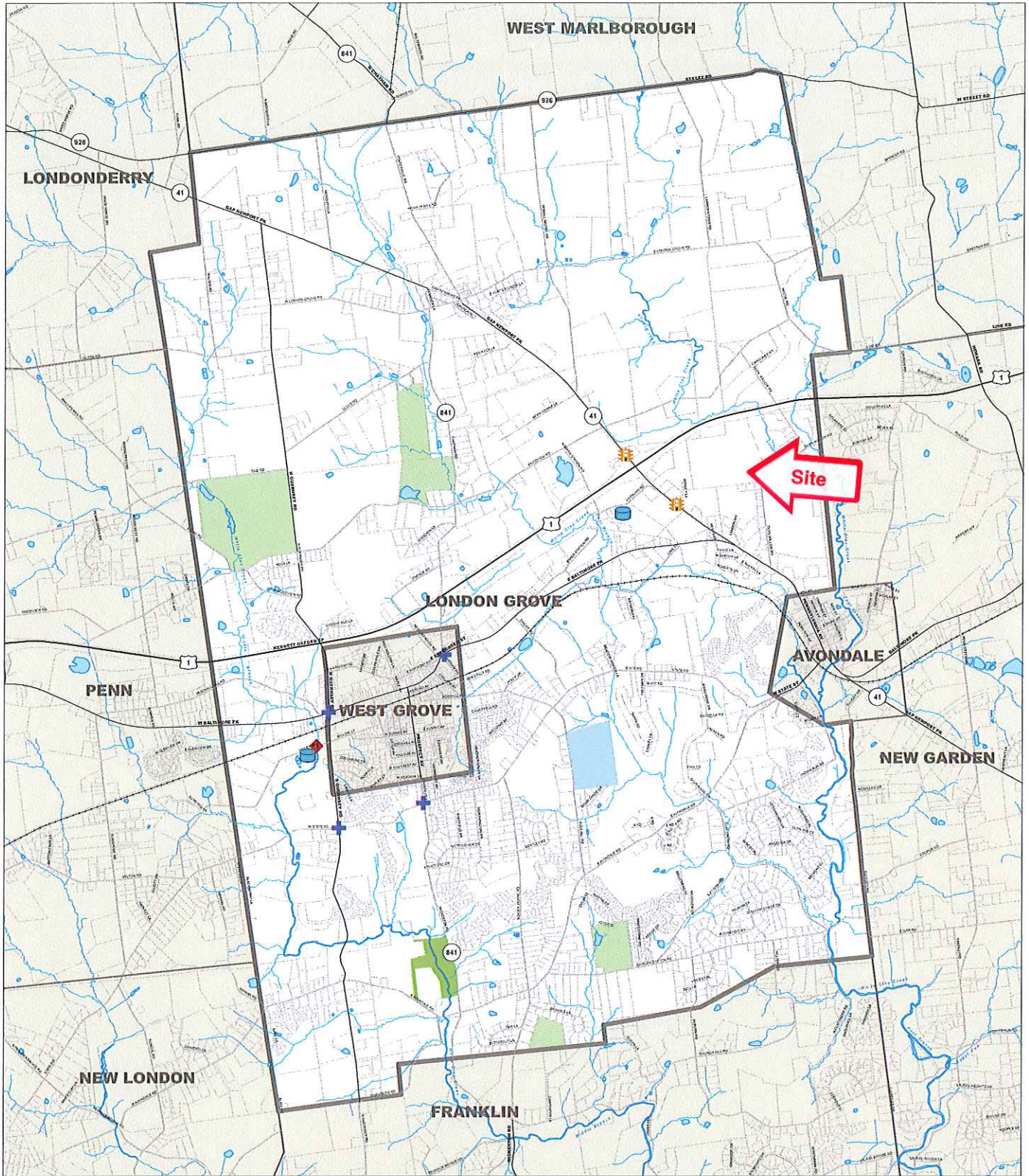








Figure 2.8.2



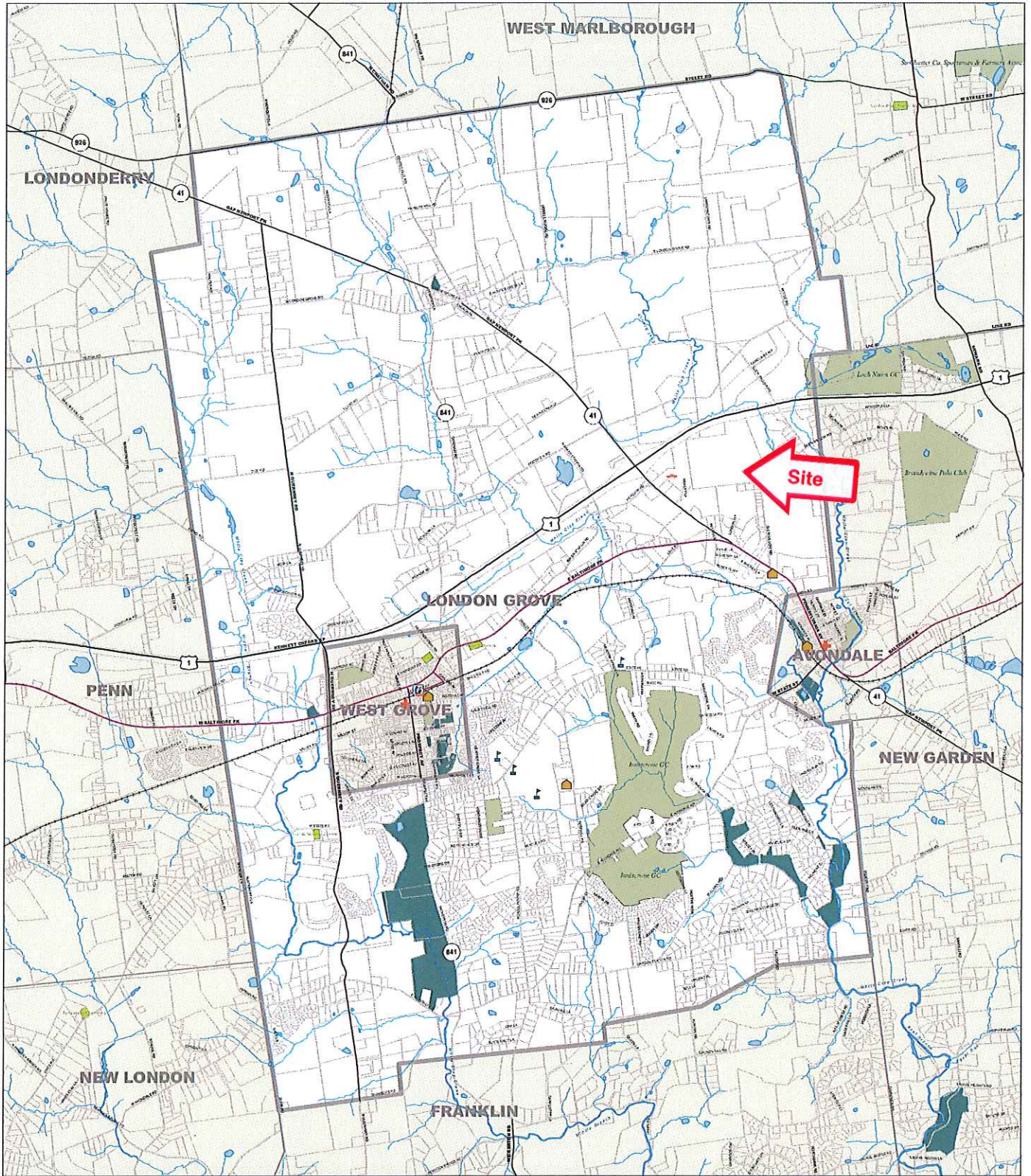
April 2007

London Grove Township Comprehensive Plan PENDING & PROPOSED PUBLIC IMPROVEMENTS

-  Study Area
-  Lagoon & Future Plant STP
-  Spray Area
-  Recreational
-  County Bridge Replacement
-  Intersection Improvement
-  Tank
-  Traffic Signal



0 900 1,800 3,600 Feet



March 2007

London Grove Township Comprehensive Plan COMMUNITY FEATURES

- | | | |
|----------------------|---------------------|----------------------|
| Study Area | Municipal Buildings | Bus Route |
| Municipal Boundaries | Police Stations | Parks / Recreation |
| Highway | EMS Stations | Municipal Open Space |
| Primary Roads | Public Libraries | Cemeteries |
| Secondary Roads | Public Schools | |
| Railroads | Private Schools | |

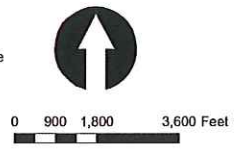
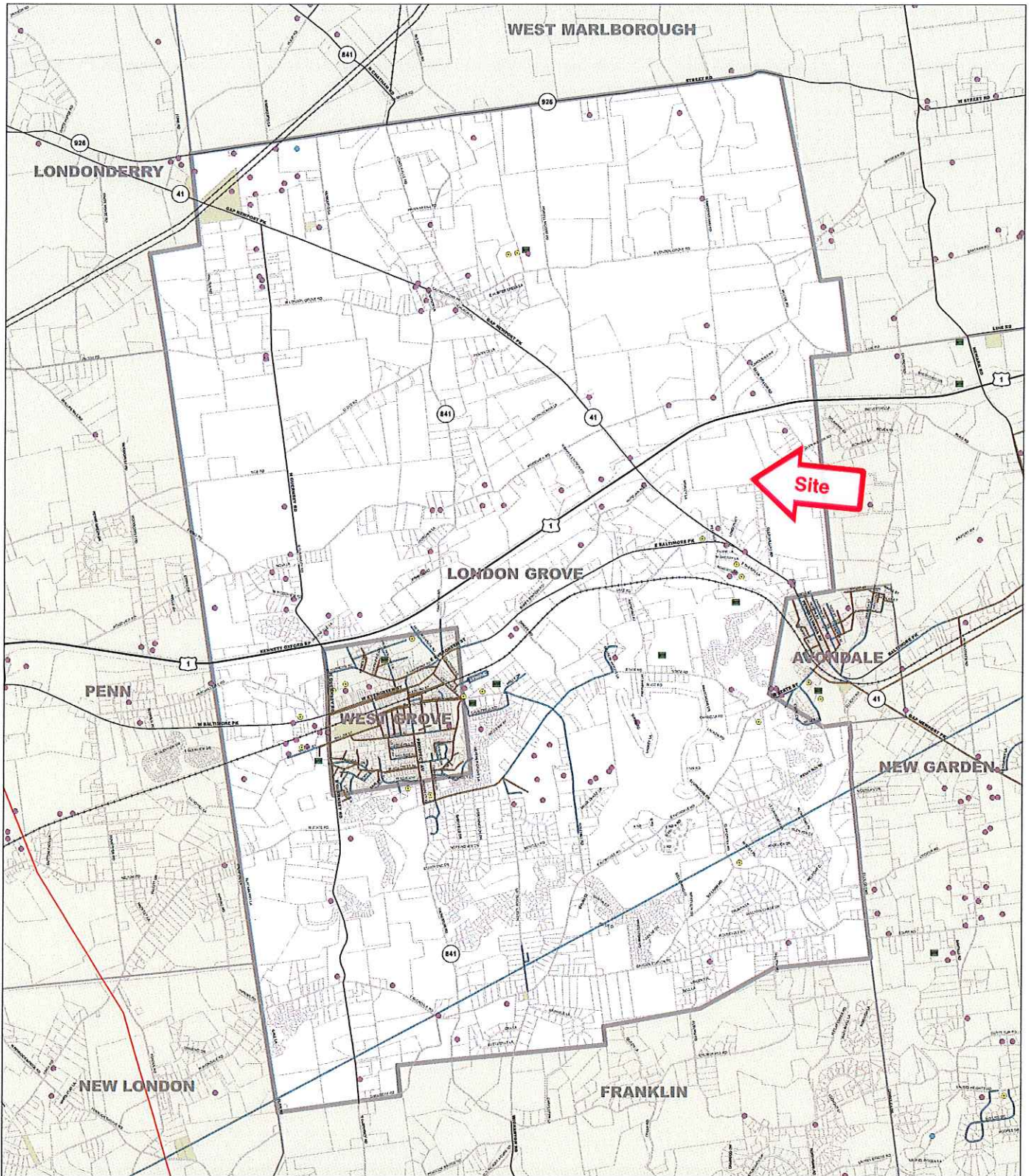


Figure 2.9.1



April 2007

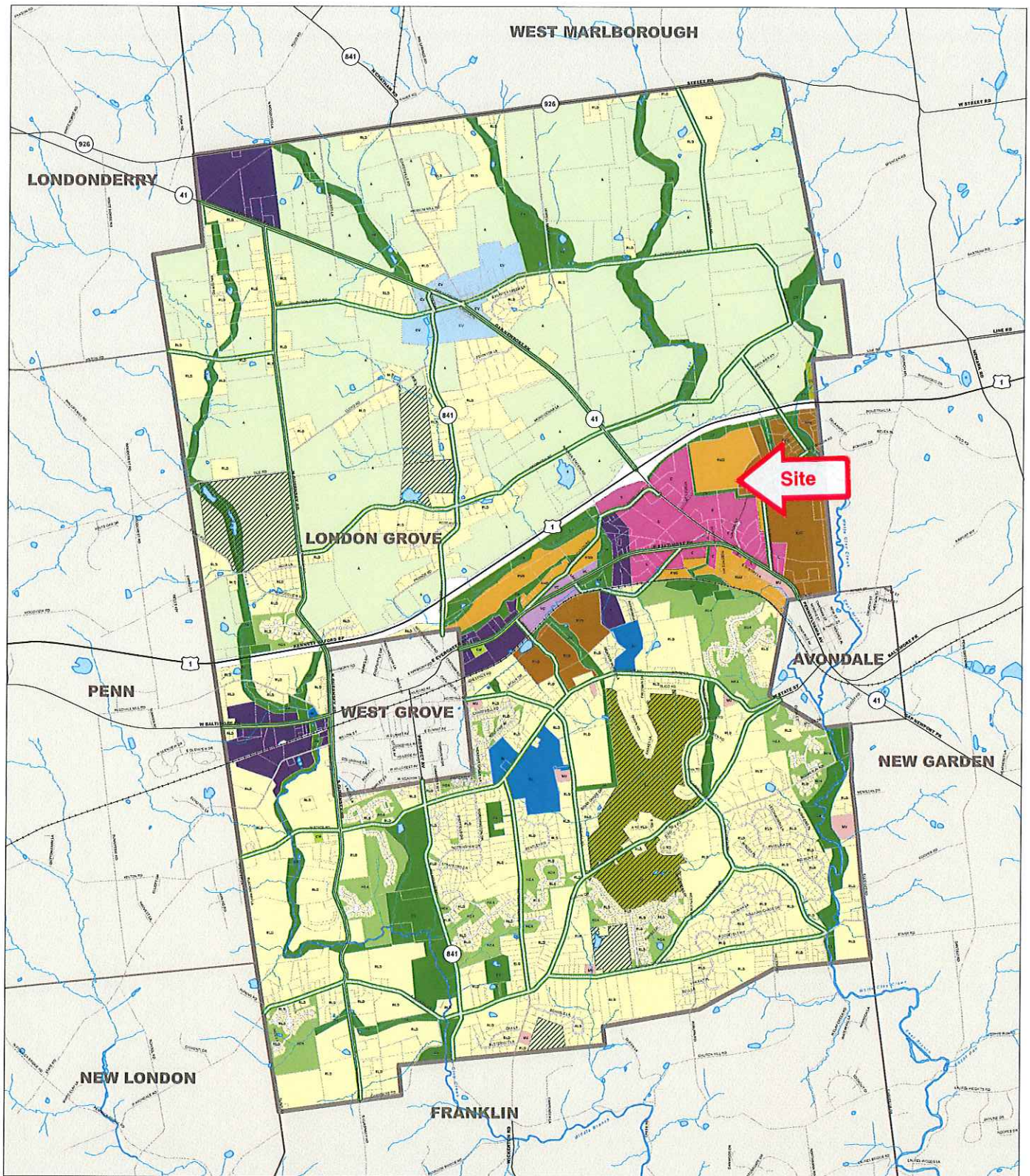
London Grove Township Comprehensive Plan UTILITIES

- Gas Lines
- Electrical Lines
- Water Lines
- Sewer Lines
- Utility-Owned Parcels
- Sewer Facilities
- Water Facilities
- Spring
- Well



0 900 1,800 3,600 Feet

Figure 2.9.2



December 2009

London Grove Township Comprehensive Plan LAND USE PLAN

Legend

- | | | |
|------------------------------|-------------------------------|-------------------------------|
| Study Area | Village Commercial | Home Owners Association |
| Agriculture | Chatham Village | Parks, Open Space & Greenways |
| Residential - Low Density | Mixed Use / Local Service | Golf Course |
| Residential - Medium Density | Institutional | Cemetery |
| Residential - High Density | Industrial / Light Industrial | Spray Fields |
| Commercial | | |



0 900 1,800 3,600 Feet

Figure 3.1.1