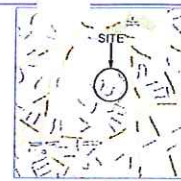


ALL WORK ON THIS SURVEY HAS BEEN DONE IN ACCORDANCE WITH THE REQUIREMENTS OF THE PROFESSIONAL SURVEYING AND MAPPING ACT OF 1958, AS AMENDED, AND THE REGULATIONS THEREUNDER. THE SURVEYOR HAS BEEN DULY LICENSED BY THE BOARD OF PROFESSIONAL SURVEYORS OF THE STATE OF PENNSYLVANIA.

ALL RIGHTS RESERVED BY THE SURVEYOR GROUP, INC. FOR THE REPRODUCTION AND DISTRIBUTION OF THIS SURVEYING PLAN AND MAP. NO PART OF THIS SURVEYING PLAN OR MAP MAY BE REPRODUCED OR TRANSMITTED IN ANY FORM OR BY ANY MEANS, ELECTRONIC OR MECHANICAL, INCLUDING PHOTOCOPYING, RECORDING, OR BY ANY INFORMATION STORAGE AND RETRIEVAL SYSTEM, WITHOUT THE PRIOR WRITTEN PERMISSION OF THE SURVEYOR GROUP, INC.



N.P. 1412 R. 1412-4
 1412-2 C. 1412-2
 1412-2 B. 1412-2
 PARCEL ID 42-00-1004-00-3

N.P. 1412 R. 1412-4
 1412-2 C. 1412-2
 1412-2 B. 1412-2
 PARCEL ID 42-00-1004-00-4

N.P. 1412 R. 1412-4
 1412-2 C. 1412-2
 1412-2 B. 1412-2
 PARCEL ID 42-00-1004-00-5



CHERRY LANE

METERS	PROPERTY LINE	ADJACENT PROPERTY LINE
1	1:20	1:20
2	2:20	2:20
3	3:20	3:20
4	4:20	4:20
5	5:20	5:20
6	6:20	6:20
7	7:20	7:20
8	8:20	8:20
9	9:20	9:20
10	10:20	10:20
11	11:20	11:20
12	12:20	12:20
13	13:20	13:20
14	14:20	14:20
15	15:20	15:20
16	16:20	16:20
17	17:20	17:20
18	18:20	18:20
19	19:20	19:20
20	20:20	20:20

Serial Number: 1000000
 CALL BEFORE YOU DIG
 PENNSYLVANIA UNIFORM DIGGING SAFETY LAW
 1-800-392-0778

GENERAL NOTES

1. THIS SURVEYING PLAN IS TO BE USED FOR THE PURPOSES OF THE DEVELOPMENT OF THE SITE AS SHOWN ON THIS PLAN.
2. THE EXISTING AND PROPOSED UTILITIES ARE SHOWN ON THIS PLAN AND SHALL BE DEEMED TO BE CORRECT UNLESS OTHERWISE NOTED.
3. ALL UTILITIES SHALL BE DEEMED TO BE AS SHOWN ON THIS PLAN UNLESS OTHERWISE NOTED.
4. THE SURVEYOR HAS BEEN ADVISED THAT THE SITE IS CONTAINED WITHIN A PLANNED UNIT DEVELOPMENT (PUD) AS SHOWN ON THE MAP OF THE PUD.
5. THE SURVEYOR HAS BEEN ADVISED THAT THE SITE IS CONTAINED WITHIN A PLANNED UNIT DEVELOPMENT (PUD) AS SHOWN ON THE MAP OF THE PUD.
6. THE SURVEYOR HAS BEEN ADVISED THAT THE SITE IS CONTAINED WITHIN A PLANNED UNIT DEVELOPMENT (PUD) AS SHOWN ON THE MAP OF THE PUD.
7. THE SURVEYOR HAS BEEN ADVISED THAT THE SITE IS CONTAINED WITHIN A PLANNED UNIT DEVELOPMENT (PUD) AS SHOWN ON THE MAP OF THE PUD.
8. THE SURVEYOR HAS BEEN ADVISED THAT THE SITE IS CONTAINED WITHIN A PLANNED UNIT DEVELOPMENT (PUD) AS SHOWN ON THE MAP OF THE PUD.

COMPUTATIONS

LINE	BEARING	DISTANCE	AREA
LINE 1	S 89° 45' 00" W	214.87 FT.	11,250.00 SQ. FT.
LINE 2	S 89° 45' 00" W	214.87 FT.	11,250.00 SQ. FT.
LINE 3	S 89° 45' 00" W	214.87 FT.	11,250.00 SQ. FT.
LINE 4	S 89° 45' 00" W	214.87 FT.	11,250.00 SQ. FT.
LINE 5	S 89° 45' 00" W	214.87 FT.	11,250.00 SQ. FT.

ZONING DISTRICT & REGULATORY DISTRICT

PROPERTY LINE	ADJACENT PROPERTY LINE
LINE 1	LINE 1
LINE 2	LINE 2
LINE 3	LINE 3
LINE 4	LINE 4
LINE 5	LINE 5

EXISTING IMPROVEMENTS

TYPE	LOCATION
ROAD	CHERRY LANE
UTILITY	ELECTRIC
UTILITY	SEWER
UTILITY	WATER

EXISTING IMPROVEMENTS - ADJACENT

TYPE	LOCATION
ROAD	CHERRY LANE
UTILITY	ELECTRIC
UTILITY	SEWER
UTILITY	WATER

EXISTING IMPROVEMENTS - ADJACENT - CONTINUED

TYPE	LOCATION
ROAD	CHERRY LANE
UTILITY	ELECTRIC
UTILITY	SEWER
UTILITY	WATER

EXISTING IMPROVEMENTS - ADJACENT - CONTINUED

TYPE	LOCATION
ROAD	CHERRY LANE
UTILITY	ELECTRIC
UTILITY	SEWER
UTILITY	WATER

EXISTING IMPROVEMENTS - ADJACENT - CONTINUED

TYPE	LOCATION
ROAD	CHERRY LANE
UTILITY	ELECTRIC
UTILITY	SEWER
UTILITY	WATER



MSG	HOMERIDGE SURVEY GROUP, INC.		PROFESSIONAL LAND SURVEYORS	
	AN EQUAL OPPORTUNITY AFFIRMATIVE ACTION EMPLOYER			
	READY AND MAPPING SURVEY OF TAX MAP PARCELS 42-07, 110 AND 111		DATE: 11-2021	
	DRAWN BY: JAC		SCALE: 1" = 40'	
	CHECKED BY: JAC		JOB NO.: 11-2021	

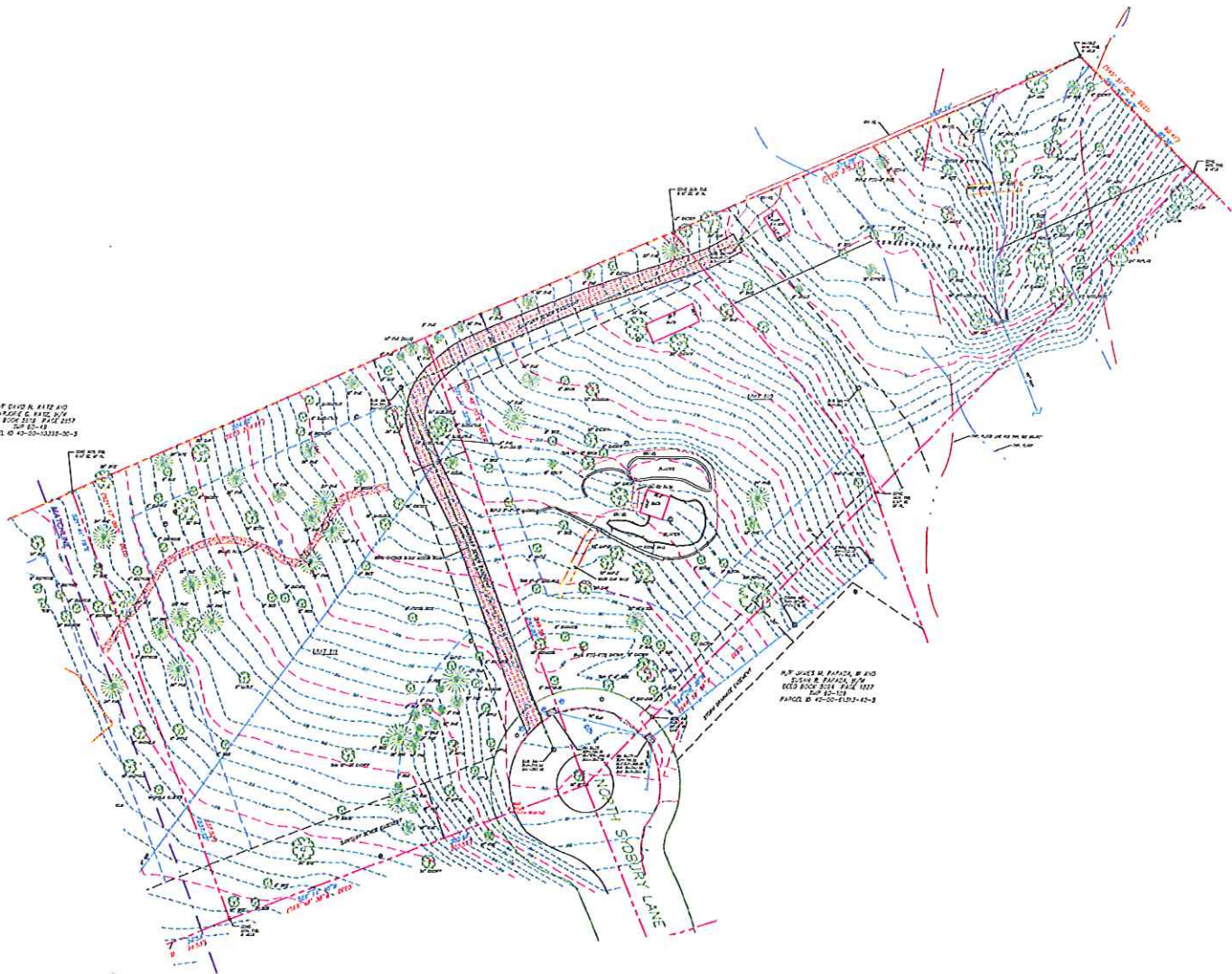
ALL LOCATIONS OF EXISTING UTILITIES SHOWN ON THIS PLAN ARE THE RESULT OF FIELD SURVEY AND ARE NOT TO BE CONSIDERED AS GUARANTEED. THE SURVEYOR HAS CONDUCTED VISUAL INSPECTIONS AND HAS NOT CONDUCTED TESTS TO VERIFY THE LOCATION OF ANY UTILITIES. THE USER OF THIS PLAN SHALL BE RESPONSIBLE FOR VERIFYING THE LOCATION OF ANY UTILITIES BEFORE THE START OF ANY WORK.

IF YOU ARE NOT SURE OF THE LOCATION OF ANY UTILITIES, YOU SHOULD CONTACT THE APPROPRIATE AGENCY OR THE UTILITY COMPANY. THE SURVEYOR IS NOT RESPONSIBLE FOR ANY DAMAGE TO UTILITIES OR PERSONS OR PROPERTY CAUSED BY THE USER OF THIS PLAN.



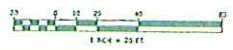
M.P. DAVID M. HAYES, JR.
 SURVEYOR & ENGINEER
 1000 BROAD ST. SUITE 100
 SUITE 100
 FARMINGTON, CT 06030-3318-00-5

M.P. JAMES M. PAPAGEORGIOU, JR.
 SURVEYOR & ENGINEER
 1000 BROAD ST. SUITE 100
 SUITE 100
 FARMINGTON, CT 06030-3318-00-5



SYMBOL	DESCRIPTION
Red dashed line	PROPERTY LINE
Black dashed line	ADJACENT PROPERTY LINE
Blue dashed line	EXISTING EASEMENT
Black dashed line	PROPOSED EASEMENT
Red dashed line	EXISTING DRIVE
Black dashed line	PROPOSED DRIVE
Blue dashed line	EXISTING WATER LINE
Black dashed line	PROPOSED WATER LINE
Red dashed line	EXISTING SEWER LINE
Black dashed line	PROPOSED SEWER LINE
Blue dashed line	EXISTING GAS LINE
Black dashed line	PROPOSED GAS LINE
Red dashed line	EXISTING ELECTRIC LINE
Black dashed line	PROPOSED ELECTRIC LINE
Blue dashed line	EXISTING TELEPHONE LINE
Black dashed line	PROPOSED TELEPHONE LINE
Red dashed line	EXISTING CABLE TV LINE
Black dashed line	PROPOSED CABLE TV LINE

STOP! NO PARKING
 CALL BEFORE YOU DIG
 1-800-4-A-DIG
 1-800-4-2644
 1-800-4-2644
 1-800-4-2644
 1-800-4-2644



MSG	MOVENEY SURVEY GROUP, INC. PROFESSIONAL LAND SURVEYORS	
	1000 BROAD ST. SUITE 100 FARMINGTON, CT 06030-3318-00-5	
ERICSON AND SUPERVISOR SURVEY CO. TAX MAP PARCELS: 63-72, 112 AND 111 1000 BROAD ST. SUITE 100 FARMINGTON, CT 06030-3318-00-5		SHEET NO. 2 OF 2
PROJECT NO. 1000 BROAD ST. SUITE 100 FARMINGTON, CT 06030-3318-00-5	DATE 10/15/2014	SCALE 1" = 20'