



COUNTRY CLUB VIEW
"QUADS" for Greg Dinnocenti
July 16, 2013

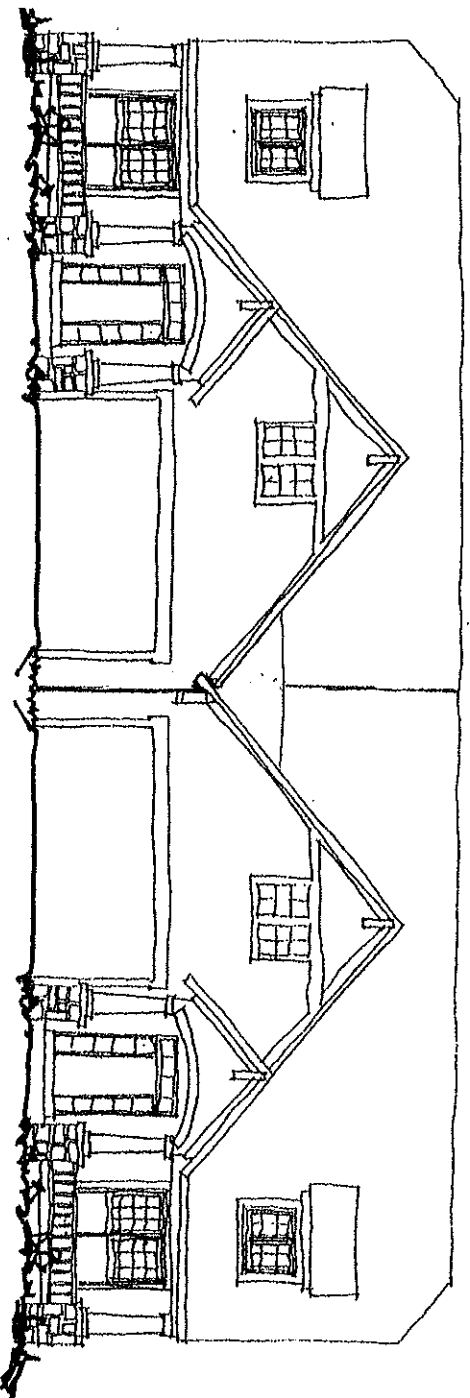
 **CARNEVALEUSTIS**
ARCHITECTS, LLC



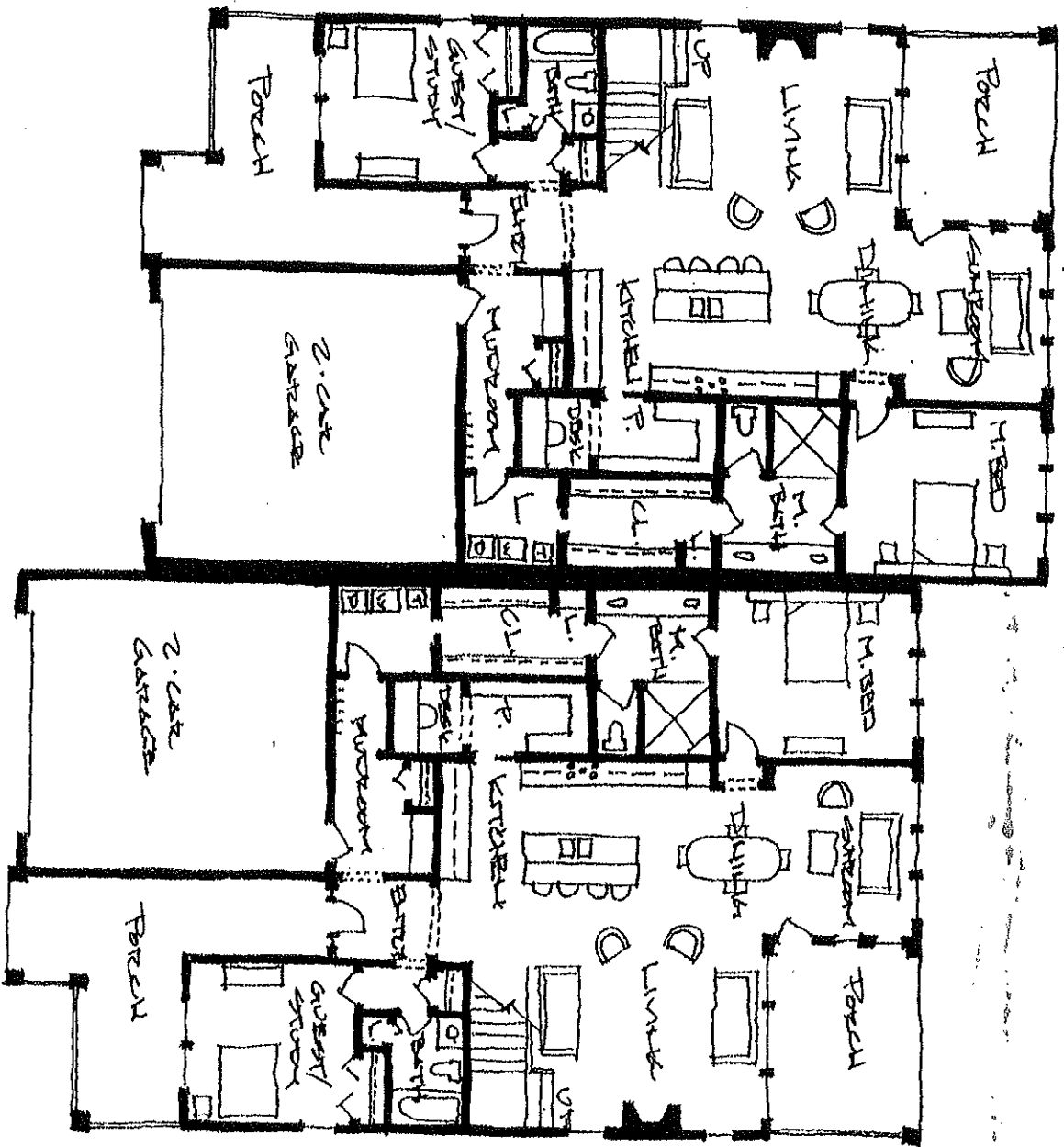
UNIT "A"

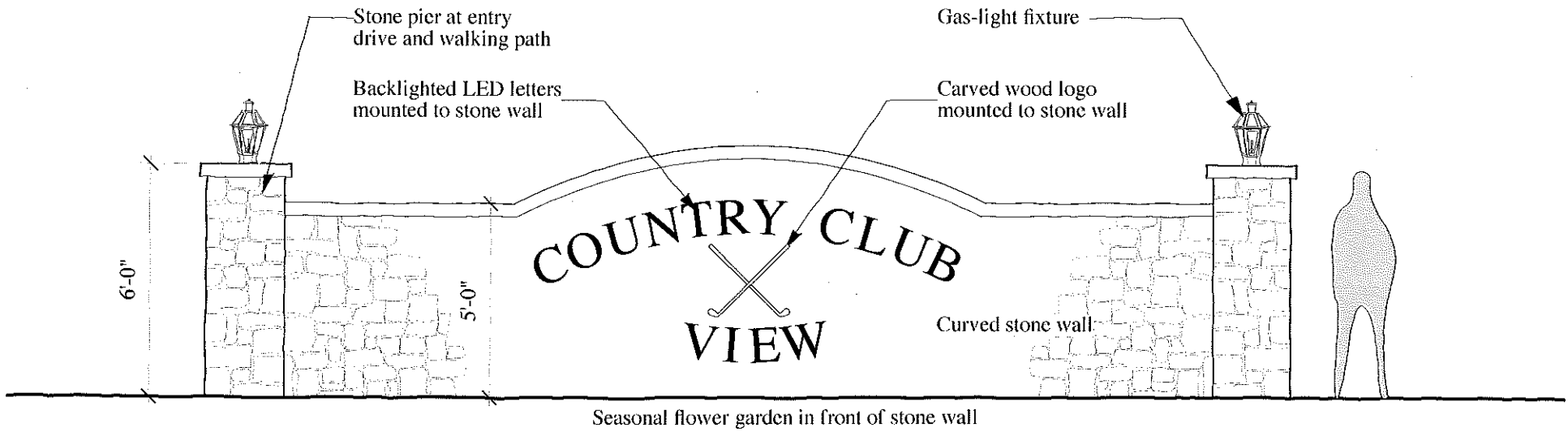
UNIT "B"

Country Club View Drive & Golf Course Elevation



THE FAIRWAYS!
 GROUND FLOOR = 1000 S.F.
 SECOND FLOOR = 450 S.F.





COUNTRY CLUB VIEW
 ENTRY GATEWAY for Greg Dinnocenti
 September 26, 2013

CARNEVALEUSTIS
 ARCHITECTS

