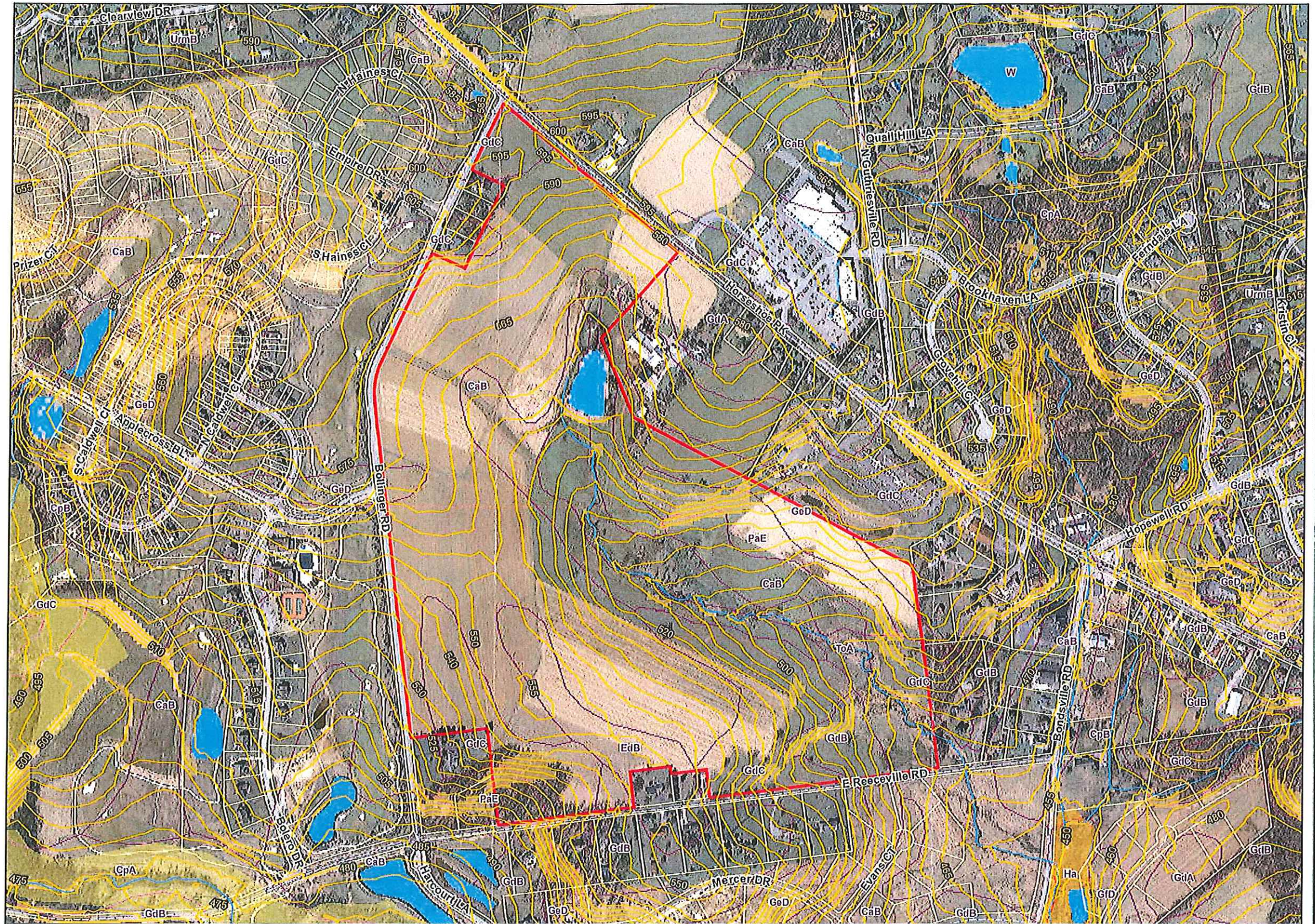
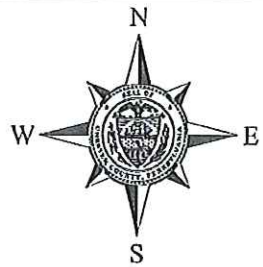


Parcel 30-5-3.6



Legend

- 5 Foot Contours
- Rivers and Streams
- Roads
- Parcel 30-5-3.6
- Parcel Boundaries
- Slope**
- Moderate - 15% to 25%
- Steep - Over 25%
- Ponds and Lakes
- 2006 FEMA Floodplains**
- 100-Year Not Engineered
- 100-Year Engineered
- 500-Yr Floodplain
- Soils

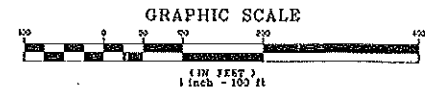


NOTES: Not for engineering purposes.
 Address data source: Chester County GIS Department.
 LIDAR Data Source: Planimetric data has been compiled to create the National Map Accuracy Standard of 1:24,000 scale map using a 30m resolution. The data was collected using a digital elevation model (DEM) dated Spring 2010, collected using a 30m resolution using ground truthing equipment. The data was collected using a 30m resolution using ground truthing equipment. The data was collected using a 30m resolution using ground truthing equipment.
 Copyright (c) 2009, County of Chester, PA. All Rights Reserved.
LIMITATION AND LIABILITY OF USE: This map was digitally compiled for informational and developmental use by the County of Chester, PA to provide data to parcels and for other reference purposes. Parcel lines do not represent actual field survey of parcels. County of Chester, PA makes no claim as to the completeness, accuracy or reliability of the data contained herein, and makes no representation or warranty, including but not limited to, the warranties of merchantability or fitness for a particular use, or any such warranties to be implied or inferred, with respect to the information data contained herein.
 No part of this document may be reproduced, stored in a retrieval system or transmitted in any form or by any means, electronic, mechanical, photocopying, recording or otherwise, except as expressly permitted by the County of Chester, PA.



80055002
 80055003
 80055004
 80055005
 80055006
 80055007
 80055008
 80055009
 80055010
 80055011
 80055012
 80055013
 80055014
 80055015
 80055016
 80055017
 80055018
 80055019
 80055020

PLEASE CALL US
 CALL BEFORE YOU DIG!
 PENNSYLVANIA LAW REQUIRES
 A 90-DAY NOTICE FOR
 CONSTRUCTION DENSE AND 30-DAY
 NOTICE FOR DESIGN STAGE - STOP CALL
 Pennsylvania One Call System, Inc.
 1-800-242-1778



LEGEND

---	PROPERTY LINE
---	LEGAL RIGHT-OF-WAY
---	EASEMENT LINE
---	EXISTING SEWER LINE
---	EXISTING RESTRICTION LINE
---	EXISTING SIGN
---	EXISTING FENCE LINE
---	EXISTING CURB RAIL
---	EXISTING UTILITY POLE
---	EXISTING FLY
---	EXISTING DRAINAGE MANHOLE
---	EXISTING DRAINAGE PIPE
---	EXISTING CURB
---	EXISTING TREE LINE
---	EXISTING VEGETATION LINE
---	EXISTING TREE
---	EXISTING BUSH
---	EXISTING BUILDINGS

Nave Newell
 Where Feet Get Down To Earth.
 Engineers, Surveyors, and Architects

317 South Clay Road • Suite 300
 King of Prussia, PA 19151-3121
 Tel: 610-261-4211 Fax: 610-261-4219
 www.navenewell.com

DATE:	
BY:	
REVISION:	
NO.	
DESCRIPTION:	
DATE:	
BY:	
REVISION:	
NO.	
DESCRIPTION:	
DATE:	
BY:	
REVISION:	
NO.	
DESCRIPTION:	

JAMES S. CONLOW
 Surveyor
 License No. 21-000773 E

ALTA / ACSM LAND TITLE SURVEY

**LANDS N/F
 MARTIN M. WEAVER
 1224 HORSESHOE PIKE
 TAXMAP 30, BLOCK 5, UNIT 3**

EAST BRANDYWINE TOWNSHIP, COUNTY OF CHESTER, PA

PROJECT NO: 2008-064.01
 DATE: 07/31/09
 SCALE: 1"=100'

DRAWN BY: JSC
 CHECKED BY: JSC

2 of 2

Copyright © 2009 by Nave Newell, Inc. King of Prussia, PA 19151. All rights reserved. The plans, elevations, drawings, illustrations and other material contained herein shall be the property of Nave Newell, Inc. and may not be reproduced, stored in a retrieval system, or transmitted in any form or by any means, electronic, mechanical, photocopying, recording, or by any information storage and retrieval system, without the express written permission of Nave Newell, Inc. Without limitation on the foregoing, all have precedence over printed dimensions. Contour lines shall be used as shown on these drawings. All other details must be submitted to this office for approval before proceeding with installation. Contour lines shall be used as shown on these drawings. All other details must be submitted to this office for approval before proceeding with installation.