

MAIN STREET & LEVERINGTON AVENUE, MANAYUNK

Watermill CONDOMINIUMS

The new Watermill at Manayunk condominiums are crafted from a historic mill, where luxury and convenience combine with original architecture to create spacious and affordable living spaces.



Enjoy the ambiance of Main Street—just a short walk away—and its many fine restaurants and unique shops. Walk your dog, ride your bike or take a run on the scenic towpath...right at your doorstep. After a day of browsing, take a soak in your marble bathroom and have a quiet dinner on your balcony with scenic river and park views. The Watermill at Manayunk is commuter-friendly, with gated, designated parking, a bus stop immediately accessible and is a short walk to the R-6. *It's all here. It's all new. It can all be yours.*



MAIN STREET AND
LEVERINGTON AVENUE
MANAYUNK

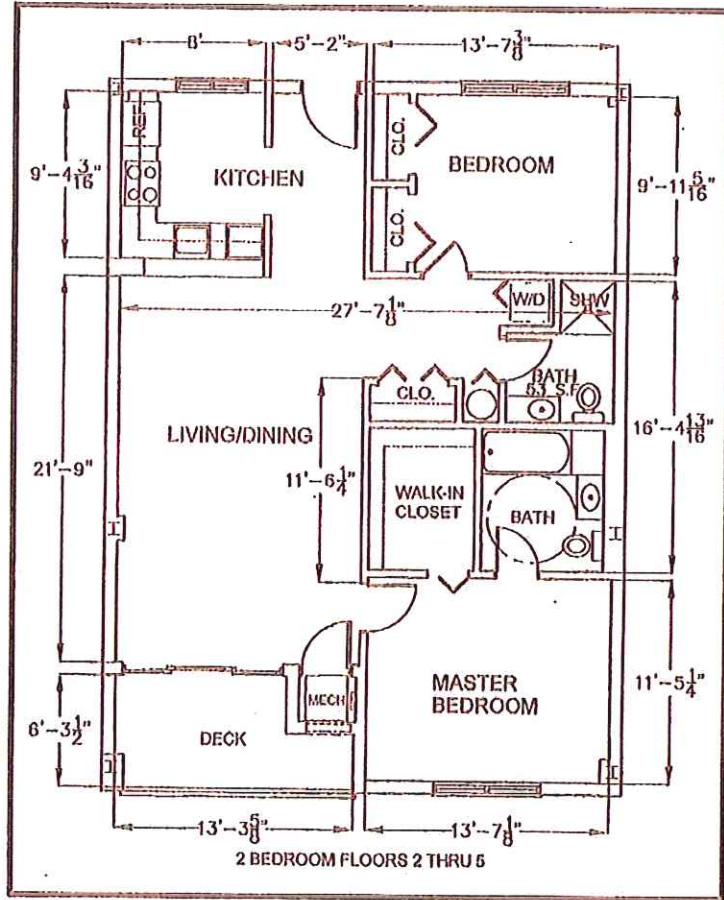
THIS ONE HAS SOUL

CONDOMINIUM FEATURES INCLUDE:

- GATED DESIGNATED PARKING
- INDIVIDUAL CLIMATE CONTROLS
- HIGH-SPEED INTERNET
- BASIC CABLE
- FITNESS CENTER
- NOLTE KITCHENS
- GRANITE COUNTERTOPS
- HARDWOOD FLOORS
- MARBLE BATHS
- WASHER AND DRYER
- WALK-IN CLOSETS
- BALCONY WITH RIVER AND PARK VIEWS
- OVERSIZED WINDOWS
- ALL PETS ALLOWED

CONDOMINIUMS
BI-LEVEL PENTHOUSES
TWO & THREE BEDROOMS

2-BEDROOM



Watermill
AT MANAYUNK