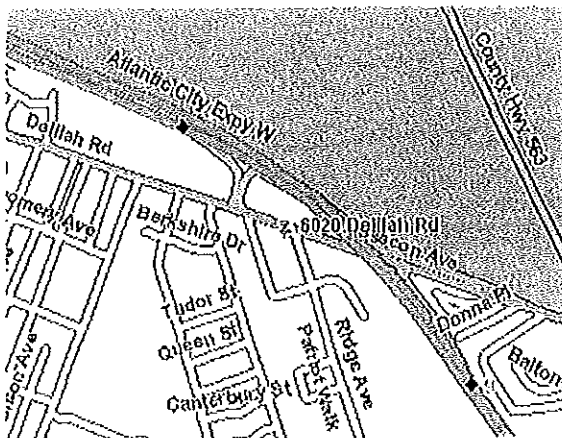


Prudential Fox & Roach Realtors-Mount Laurel  
TREND Realty Records Detailed Report courtesy of: Wendy Amato  
1 of 1 Total Properties

Office: 856-222-0077  
Office: 856-222-0077  
E-mail: wendy.amato@prufoxroach.com

6020 Dellah Rd  
Egg Harbor Township, NJ, 08234-5520  
Egg Harbor Twp, Atlantic County



#### Summary Information

Owner	Bcthatcher Real Estate Llc	Prop Class	Commercial
Owner Addr	6020 Dellah Rd	Settle Date	01/12/2000
Owner City St	Egg Harbor Township, NJ	Sale Amt	\$1
Owner Zip+4	08234-5520	Annual Tax	\$50,492
Owner Cr Rt	R005		

#### Geographic Information

High Sch Dist	Egg Harbor Twp	Lot	00006
Mid Sch Dist	Egg Harbor Twp	Old TaxId	08-A0039 A-00020
Elm Sch Dist	Egg Harbor Twp	Old Block	A0039 A
Neighborhood	None Available	Old Lot	00020
TaxId	08-01502-00006	Latitude	39.439214
Tax Map	16	Longitude	-74.609147
Block	01502	Census	0117.011

#### Assessment & Tax Information

Tax Year	2006	Taxable Bldg Asmt	\$777,700	Total Bldg Asmt	\$777,700
Annual Tax	\$50,492	Taxable Total Asmt	\$1,503,200	Total Asmt	\$1,503,200
Taxable Land Asmt	\$725,500	Total Land Asmt	\$725,500		

#### Lot Characteristics

Sq Ft	1,214,017	County Desc	27.87 ACRES
Acres	27.87	Zoning	RG6

#### Codes & Descriptions

County Land Desc 27.87 ACRES  
County Bldg Desc GOLF CENTER

#### Transaction History (Complete)

Settle Date	1/12/2000	Book	6625
Sale Amt	\$1	Page	84
Sale Remarks:	Nominal		
Owner Names:	Bcthatcher Real Estate Llc		

# Atlantic City International Airport

From Wikipedia, the free encyclopedia

(Redirected from Atlantic City Airport)

**Atlantic City International Airport** (IATA: **ACY**, ICAO: **KACY**, FAA LID: **ACY**) is a joint civil-military public airport located nine nautical miles (17 km) northwest of the central business district of Atlantic City, in Atlantic County, New Jersey.<sup>[1]</sup> Located in Egg Harbor Township, NJ, it is the major component of a national aviation area that lies on portions of three municipalities: Egg Harbor Township, Galloway Township, and Hamilton Township. The airport is accessible via Exit 9 on the Atlantic City Expressway. The facility is operated by the South Jersey Transportation Authority, which also owns the terminal building. Most of the land area is owned by the Federal Aviation Authority.<sup>[2]</sup>

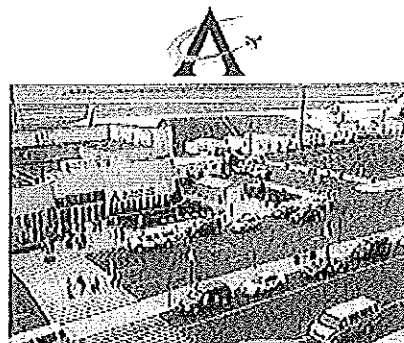
The facility also serves as a base for the New Jersey Air National Guard's 177th Fighter Wing operating the F-16C/D Fighting Falcon, and the United States Coast Guard's Coast Guard Air Station Atlantic City operating the HH-65 Dolphin. The airport is adjacent to the William J. Hughes FAA Technical Center, a major research and testing hub for the Federal Aviation Administration, and a training center for the Federal Air Marshal Service. It is also an abort landing site for the Space Shuttle.

The airport is served by Spirit Airlines and AirTran Airways. Additionally, Harrah's Entertainment is offering service to select destinations east of the Mississippi River via its Total Rewards Air. This service is being offered as a scheduled charter and only during the summer months. Flights are offered through Gold Transportation on a Sky King or Pace Airlines 737, or similar aircraft.<sup>[3]</sup>

The South Jersey Transportation Authority has outlined plans for massive terminal expansions (on top of current initiatives) which might be necessary if more air carriers wish to serve the airport. Total passenger traffic at the airport in 2010 was 947,000, making it the 115th busiest airport in the country. The SJTA is currently discussing a possible sale or transfer of the airport's operating lease to the Port Authority of New York and New Jersey. The SJTA owns a small area around the terminal and leases runways and other land from the FAA.<sup>[4]</sup>

## Contents

### Atlantic City International Airport



IATA: **ACY** – ICAO: **KACY** – FAA LID: **ACY**

#### Summary

<b>Airport type</b>	Public
<b>Owner/Operator</b>	South Jersey Transportation Authority
<b>Serves</b>	Atlantic City, New Jersey
<b>Location</b>	Egg Harbor Township, New Jersey
<b>Elevation AMSL</b>	75 ft / 23 m
<b>Coordinates</b>	39°27′27″N 074°34′38″W
<b>Website</b>	<a href="http://www.sjta.com/acairport/">http://www.sjta.com/acairport/</a>

#### Runways

Direction	Length		Surface
	ft	m	
4/22	6,144	1,873	Asphalt/Concrete
13/31	10,000	3,048	Asphalt

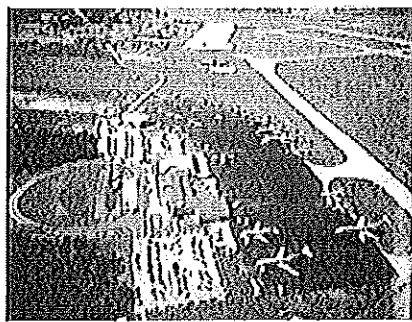
#### Statistics (2009)

<b>Aircraft operations</b>	99,587
<b>Based aircraft</b>	70

Source: Federal Aviation Administration<sup>[1]</sup>

- 1 History
  - 1.1 Atlantic City Air National Guard Base
  - 1.2 Coast Guard Air Station Atlantic City
- 2 Facilities and aircraft
  - 2.1 Terminal
  - 2.2 Airlines and destinations
  - 2.3 Restaurants and Lounges
- 3 Future plans
  - 3.1 NextGen Technical Park
  - 3.2 Atlantic City Expressway connector
- 4 Port Authority takeover
- 5 References
- 6 External links

## History



An early photo of the Atlantic City Airport Terminal

In 1942, Naval Air Station Atlantic City was constructed on 2,444 acres (9.89 km<sup>2</sup>) of leased private land in Egg Harbor Township, New Jersey. The mission of NAS Atlantic City was to train various carrier air groups consisting of fighter, bomber and torpedo squadrons and their crews for combat. In August 1943, NAS Atlantic City changed its mission to strictly fighter training consisting of low and high altitude gunnery tactics, field carrier landing practice, carrier qualifications, bombing, formation tactics, fighter direction, night operations and an associated ground school curriculum.<sup>[5]</sup>

NAS Atlantic City was decommissioned in June 1958 and transferred to the Airways Modernization Board (AMB).

Concurrent with the Navy's departure, the then-177th Fighter Squadron of the New Jersey Air National Guard relocated to Atlantic City from their former base at Newark with their F-84F Thunderstreak aircraft. In November 1958, the then-Federal Aviation Agency, now Federal Aviation Administration (FAA), took over operations of the AMB. The FAA expanded the former U.S. Navy land parcel to approximately 5,000 acres (20 km<sup>2</sup>) and established the National Aviation Facilities Experimental Center research facility that eventually became the William J. Hughes Technical Center. The South Jersey Transportation Authority (SJTA) initially leased portions of the airport from the FAA and now serves as the airport owner and operator of the facility.<sup>[5]</sup>

In the past, ACY has been served by US Airways with jet service to Pittsburgh and turboprops to Philadelphia, Baltimore, and Washington, as well as Continental Express on turboprops and regional jets to Cleveland Hopkins International Airport by Continental Express carrier ExpressJet Airlines on Embraer ERJ series regional jets. Delta Air Lines also offered service to Boston on Delta Connection regional jets operated by Atlantic Coast Airlines until a few years ago. Delta Connection with its partner Comair, also operated flights to Cincinnati and Orlando, which was terminated on May 1, 2007. WestJet served ACY with service to Toronto, but ended service on May 9, 2010, leaving the airport without any international service.

The airport is currently undergoing a \$40 million terminal and taxiway expansion project which will more than double the size of current facilities.<sup>[*citation needed*]</sup>

### Atlantic City Air National Guard Base



Since 1958, ACY has also been home to Atlantic City ANGB and the 177th Fighter Wing (177 FW), an Air Combat Command (ACC)-gained unit of the New Jersey Air National Guard operating the F-16C/D Fighting Falcon.<sup>[6]</sup> Since October 1998, the wing has had an active involvement in Operation Noble Eagle, Operation Southern Watch, Operation Northern Watch, Operation Enduring Freedom and Operation Iraqi Freedom.<sup>[7]</sup> As an Air National Guard unit, the 177 FW has dual Federal and State missions. Its Federal mission is "To Provide Combat Ready Citizen-Airmen, Aircraft and Equipment for Worldwide Deployment in Support of USAF Objectives." Its State of New Jersey mission is to "Support the citizens of New Jersey by protecting life and property, preserving the peace, order, and public safety when called upon by the Governor." <sup>[7]</sup>



During the 1960s the 95th Fighter Interceptor Squadron, stationed at Dover AFB, Delaware maintained F-106 Delta Darts on 24 Hour Alert.



### Coast Guard Air Station Atlantic City

ACY is also home to Coast Guard Air Station Atlantic City. CGAS Atlantic City was opened on 18 May 1998 and is the newest and largest single airframe unit and facility of the Coast Guard's Air Stations. It is a product of the merging of the former CGAS Brooklyn/Floyd Bennett Field, NY and Group Air Station Cape May, NJ into one unit. CGAS Atlantic City consists of 10 HH-65C Dolphin helicopters and it maintains two Dolphin helicopters in 30-minute response status. Approximately, 250 aviation personnel comprise the facility's full-time staff, augmented by additional part-time Coast Guard Reserve and Coast Guard Auxiliary personnel. CGAS Atlantic City also provides aircrews and aircraft to the Washington, D.C. area as part of Operation Noble Eagle, the Department of Defense USNORTHCOM / NORAD mission to protect the airspace around the nation's capital.

## Facilities and aircraft

Atlantic City International Airport covers an area of 5,000 acres (2,023 ha) at an elevation of 75 feet (23 m) above mean sea level. It has two runways: 4/22 is 6,144 by 150 feet (1,873 x 46 m) with an asphalt and concrete surface; 13/31 is 10,000 by 150 feet (3,048 x 46 m) with an asphalt surface.<sup>[1]</sup>

For the 12-month period ending December 31, 2009, the airport had 99,587 aircraft operations, an average of 272 per day: 50% military, 14% scheduled commercial, 35% general aviation and 1% air taxi. At that time there were 70 aircraft based at this airport: 20% single-engine, 14% multi-engine, 19% jet, 16% helicopter and 31% military.<sup>[1]</sup>

### Terminal

Atlantic City International Airport has one terminal, serving all of its flights. Several charter carriers operate out of the terminal, along with the scheduled flights of Spirit and AirTran. The terminal has a small layout, making it an alternative to Philadelphia International Airport or Newark Liberty

## International Airport.

Passengers enter the terminal on the lower-level. This level houses the check-in counters, along with a small grille, a gift shop, and rental-car offices. Baggage claim is also on this level, with two carousels. After check-in, passengers proceed to the security checkpoint, which is also on this level. After the security checkpoint are stairs and escalators which lead to the departures level. The 7 gates are housed here, with several open for use by charters, and several in use by the scheduled carriers. All gate areas are uniform, with no customization by the airlines. Also on the second level, there is a cafe, a bar, and a newsstand.

Free Wi-Fi is available throughout the terminal, along with a free-access computer terminal available for public use.

## Airlines and destinations

Airlines <span><span><span></span></span></span>	Destinations
AirTran Airways	Atlanta
Spirit Airlines	Boston, Chicago-O'Hare, Detroit, Fort Lauderdale, Fort Myers, Myrtle Beach, Orlando, Tampa Seasonal: West Palm Beach

## Restaurants and Lounges

- Thrasher's
- Deuce's Wild
- Samuel Adams Brew Pub

## Future plans

### NextGen Technical Park

A technology park housing Next Generation Air Transportation System is currently under construction on the airport property on a 55-acre lot near Amelia Earhart Boulevard and Delilah Road. The seven-building complex is set to contain 408,000 square feet of offices, laboratories and research facilities. The park will focus on developing new computer equipment that will transform the country's air-traffic control program into a satellite-based system.<sup>[8]</sup> The first of the buildings is set to open in April 2012 and will contain a lab for the FAA as well as research space for other tenants.<sup>[9]</sup>

A second office park, the NextGen International Aviation Center for Excellence, is set to be built in nearby Hamilton Township, adjacent to the Hamilton Mall and Atlantic City Race Course, the latter of which is set to be renovated. A new transportation center at the site would transfer workers between the two complexes.<sup>[10]</sup>

### Atlantic City Expressway connector

The SJTA revealed plans for a major road improvement project that would link the airport directly to the Atlantic City Expressway, with construction beginning as early as 2013. The plan includes new ramps with two overpasses over the expressway. The road would connect Amelia Earhart Boulevard with a

bridge over Airport Circle. Plans also call for building a service road with another overpass that would provide access to Delilah Road. Another project involves the installation of an overpass at the end of Amelia Earhart Boulevard next to the entrance to the FAA tech center. The proposed roadway would intrude upon a small section of a mobile home park and land owned by Egg Harbor Township.<sup>[11]</sup>

## Port Authority takeover

In February 2011, the New Jersey Legislature authorized in February the Atlantic City Tourism District, which would promote continued development of tourism in the region.<sup>[12]</sup> A provision included the potential transfer of operations to the Port Authority of New York and New Jersey.<sup>[13]</sup>

## References

- <sup>^</sup> <sup>a</sup> <sup>b</sup> <sup>c</sup> <sup>d</sup> FAA Airport Master Record for ACY (Form 5010 PDF). Federal Aviation Administration. Effective 29 July 2010.
- <sup>^</sup> [http://www.pressofatlanticcity.com/news/press/atlantic\\_city/local-state-federal-interests-in-atlantic-city-airport-complicate-sale/article\\_e7decfb6-79de-11e0-aa9c-001cc4c002e0.html](http://www.pressofatlanticcity.com/news/press/atlantic_city/local-state-federal-interests-in-atlantic-city-airport-complicate-sale/article_e7decfb6-79de-11e0-aa9c-001cc4c002e0.html)
- <sup>^</sup> [http://www.harrahs.com/images/non\\_image\\_assets/TRAir/ATL.pdf](http://www.harrahs.com/images/non_image_assets/TRAir/ATL.pdf)
- <sup>^</sup> "Local, state, federal interests in Atlantic City Airport complicate sale". *Press of Atlantic City*. May 9, 2011. [http://www.pressofatlanticcity.com/news/press/atlantic\\_city/local-state-federal-interests-in-atlantic-city-airport-complicate-sale/article\\_e7decfb6-79de-11e0-aa9c-001cc4c002e0.html](http://www.pressofatlanticcity.com/news/press/atlantic_city/local-state-federal-interests-in-atlantic-city-airport-complicate-sale/article_e7decfb6-79de-11e0-aa9c-001cc4c002e0.html). Retrieved May 9, 2011.
- <sup>^</sup> <sup>a</sup> <sup>b</sup> "Atlantic City Naval Air Station, Egg Harbor Township, New Jersey fact sheet". US Army Corps of Engineers. December 2007. <http://www.nan.usace.army.mil/project/newjers/factsh/pdf/atlantic.pdf>. Retrieved June 2, 2010.
- <sup>^</sup> [http://en.wikipedia.org/wiki/177th\\_Fighter\\_Wing](http://en.wikipedia.org/wiki/177th_Fighter_Wing)
- <sup>^</sup> <sup>a</sup> <sup>b</sup> <http://www.177fw.af.mil/>
- <sup>^</sup> [http://www.pressofatlanticcity.com/news/press/atlantic/article\\_e8d0c726-bd33-11de-91e7-001cc4c002e0.html](http://www.pressofatlanticcity.com/news/press/atlantic/article_e8d0c726-bd33-11de-91e7-001cc4c002e0.html)
- <sup>^</sup> [http://www.pressofatlanticcity.com/news/press/atlantic/nextgen-park-to-benefit-area-in-many-ways-sjta-says/article\\_0daa5fe2-66f4-11e0-89e9-001cc4c03286.html](http://www.pressofatlanticcity.com/news/press/atlantic/nextgen-park-to-benefit-area-in-many-ways-sjta-says/article_0daa5fe2-66f4-11e0-89e9-001cc4c03286.html)
- <sup>^</sup> Could NextGen plans breathe new life into Atlantic City Race Course property? Press of Atlantic City]
- <sup>^</sup> Watson, Sarah (April 14, 2011). "Project would link Atlantic City International Airport directly to the Atlantic City Expressway by 2013". *Press of Atlantic City*. [http://www.pressofatlanticcity.com/news/breaking/project-would-link-atlantic-city-international-airport-directly-to-the/article\\_3c5d0ef2-663b-11e0-b504-001cc4c03286.html](http://www.pressofatlanticcity.com/news/breaking/project-would-link-atlantic-city-international-airport-directly-to-the/article_3c5d0ef2-663b-11e0-b504-001cc4c03286.html). Retrieved April 17, 2011.
- <sup>^</sup> [http://www.pressofatlanticcity.com/news/press/atlantic\\_city/christie-signs-tourism-district-bill-says-revel-casino-to-open/article\\_03705842-2e1e-11e0-8c75-001cc4c002e0.html](http://www.pressofatlanticcity.com/news/press/atlantic_city/christie-signs-tourism-district-bill-says-revel-casino-to-open/article_03705842-2e1e-11e0-8c75-001cc4c002e0.html)
- <sup>^</sup> [http://www.pressofatlanticcity.com/news/press/atlantic\\_city/local-state-federal-interests-in-atlantic-city-airport-complicate-sale/article\\_e7decfb6-79de-11e0-aa9c-001cc4c002e0.html](http://www.pressofatlanticcity.com/news/press/atlantic_city/local-state-federal-interests-in-atlantic-city-airport-complicate-sale/article_e7decfb6-79de-11e0-aa9c-001cc4c002e0.html) Fletcher Juliet, Press of Atlantic City, Sunday, May 8, 2011

## External links

- Atlantic City International Airport, official web site
- FAA Airport Diagram (PDF), effective 02 June 2011
- FAA Terminal Procedures for ACY, effective 02 June 2011
- Resources for this airport:
  - AirNav airport information for KACY
  - ASN accident history for ACY
  - FlightAware airport information and live flight tracker
  - NOAA/NWS latest weather observations

- SkyVector aeronautical chart for KACY
- FAA current ACY delay information

Retrieved from "[http://en.wikipedia.org/wiki/Atlantic\\_City\\_International\\_Airport](http://en.wikipedia.org/wiki/Atlantic_City_International_Airport)"

Categories: [Airports in New Jersey](#) | [Atlantic City, New Jersey](#) | [United States Coast Guard Aviation](#) | [Facilities of the United States Air National Guard](#) | [Transportation in Atlantic County, New Jersey](#) | [Space Shuttle landing sites](#) | [Buildings and structures in Atlantic County, New Jersey](#)

---

- This page was last modified on 17 May 2011 at 20:17.
- Text is available under the Creative Commons Attribution-ShareAlike License; additional terms may apply. See Terms of Use for details.  
Wikipedia® is a registered trademark of the Wikimedia Foundation, Inc., a non-profit organization.

# Egg Harbor Township, New Jersey

Coordinates: 39°23′28″N 74°35′38″W﻿ / ﻿39.39111°N 74.59389°W﻿ / 39.39111; -74.59389

From Wikipedia, the free encyclopedia

**Egg Harbor Township** is a township in Atlantic County, New Jersey, United States. As of the 2010 census, the township population was 43,323, a growth of more than 40% since the previous enumeration.

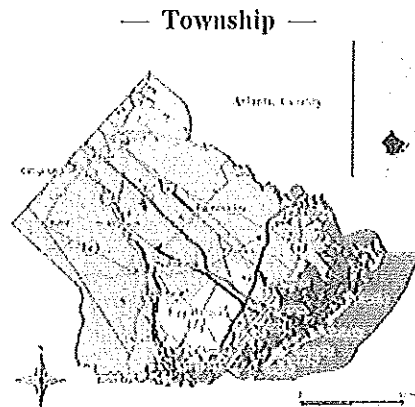
Egg Harbor Township was first mentioned as part of Gloucester County in records dating back to March 20, 1693, and at times was called **New Weymouth**. The township's western boundary was established on May 13, 1761, with the area called **Great Egg-Harbour township**. Portions of the township were taken to form Galloway Township, which was established by Royal Charter on April 4, 1774. Additional portions were taken to form Weymouth Township on February 12, 1798. On February 21, 1798, the area was incorporated as **Egg-Harbour Township**. Over the ensuing centuries, portions of the township were taken to create many new municipalities: Hamilton Township on February 5, 1813; Atlantic City on May 1, 1854; Absecon on May 1, 1854; South Atlantic City (now Margate City) on September 7, 1885; Pleasantville on January 10, 1889; Linwood on February 20, 1889; Somers Point on April 24, 1886; Longport on March 7, 1898; Ventnor City on March 17, 1903; and Northfield on March 21, 1905.<sup>[7]</sup>

Great Egg Harbor got its name from Dutch explorer Cornelius Jacobsen Mey. In 1614, Mey came upon the inlet to the Great Egg Harbor River. The meadows were so covered with shorebird and waterfowl eggs that he called it "Eyren Haven" (Egg Harbor).

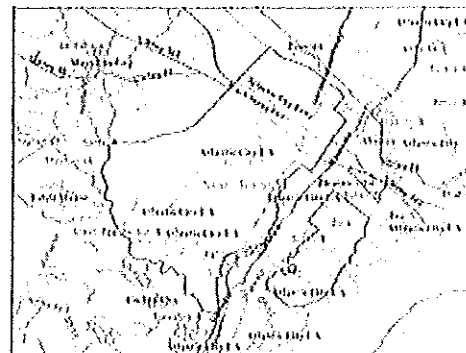
## Contents

- 1 Geography
- 2 Demographics
- 3 Government
  - 3.1 Local government
  - 3.2 Federal, state and county representation
- 4 History
- 5 Education

### Egg Harbor Township, New Jersey



Map of Egg Harbor Township in Atlantic County. Inset: Location of Atlantic County highlighted in the State of New Jersey.



Census Bureau map of Egg Harbor Township, New Jersey

Coordinates: 39°23′36″N 74°35′35″W﻿ / ﻿39.39333°N 74.59306°W﻿ / 39.39333; -74.59306

<b>Country</b>	United States
<b>State</b>	New Jersey
<b>County</b>	Atlantic
<b>Incorporated</b>	February 21, 1798
<b>Government</b> <sup>[1]</sup>	
<span> </span> - <span> </span> Type	Township (New Jersey)
<span> </span> - <span> </span> Mayor	James J. McCullough
<span> </span> - <span> </span> Administrator	Peter J. Miller <sup>[2]</sup>
<b>Area</b>	
<span> </span> - <span> </span> Total	75.0 <span> </span> sq <span> </span> mi (194.1 <span> </span> km <sup>2</sup> )
<span> </span> - <span> </span> Land	67.3 <span> </span> sq <span> </span> mi (174.4 <span> </span> km <sup>2</sup> )
<span> </span> - <span> </span> Water	7.6 <span> </span> sq <span> </span> mi (19.7 <span> </span> km <sup>2</sup> )
<b>Elevation</b> <sup>[3]</sup>	16 <span> </span> ft (5 <span> </span> m)



- 6 Commerce
- 7 Development and the Pine Barrens
- 8 Notable residents
- 9 References
- 10 External links

## Geography

According to the United States Census Bureau, the township has a total area of 75.0 square miles (194.1 km<sup>2</sup>), of which, 67.3 square miles (174.4 km<sup>2</sup>) of it is land and 7.6 square miles (19.7 km<sup>2</sup>) of it (10.15%) is water.

<b>Population (2010)</b>	
<span> </span> - <b>Total</b>	43,323
<span> </span> - <b>Density</b>	643.7/sq mi (248.4/km <sup>2</sup> )
<b>Time zone</b>	Eastern (EST) (UTC-5)
<span> </span> - <b>Summer (DST)</b>	EDT (UTC-4)
<b>ZIP code</b>	08234
<b>Area code(s)</b>	609
<b>FIPS code</b>	34-20290 <sup>[4][5]</sup>
<b>GNIS feature ID</b>	0882051 <sup>[6]</sup>
<b>Website</b>	http://www.ehtgov.org

The Township is bounded by Hamilton Township and Galloway Township to the west and north, respectively, the cities of Absecon, Pleasantville, Northfield, Linwood and Somers Point to the east, Longport and Ocean City to the southeast and the city of Estell Manor to the south. Portions of the township, notably the West Atlantic City and Anchorage Poynte areas, are not contiguous to the main body of the municipality.

## Demographics

As of the census<sup>[4]</sup> of 2000, there were 30,726 people, 111,990 households, and 81,080 families residing in the township. The population density was 4560.2 people per square mile (176.1/km<sup>2</sup>). There were 120,670 housing units at an average density of 1790.2/sq mi (69.2/km<sup>2</sup>). The racial makeup of the township was 79.42% White, 10.37% African American, 0.21% Native American, 5.05% Asian, 0.05% Pacific Islander, 2.82% from other races, and 2.07% from two or more races. Hispanic or Latino of any race were 6.76% of the population.

There were 111,990 households out of which 37.5% had children under the age of 18 living with them, 55.3% were married couples living together, 12.6% had a female householder with no husband present, and 27.6% were non-families. 22.0% of all households were made up of individuals and 7.1% had someone living alone who was 65 years of age or older. The average household size was 2.74 and the average family size was 3.23.

In the township the population was spread out with 27.9% under the age of 18, 6.6% from 18 to 24, 32.6% from 25 to 44, 23.7% from 45 to 64, and 9.2% who were 65 years of age or older. The median age was 36 years. For every 100 females there were 94.6 males. For every 100 females age 18 and over, there were 90.7 males.

The median income for a household in the township was \$52,550, and the median income for a family was \$60,032. Males had a median income of \$40,033 versus \$30,643 for females. The per capita income for the township was \$22,328. About 4.2% of families and 5.4% of the population were below the poverty line, including 6.2% of those under age 18 and 9.3% of those age 65 or over.

## Government

### Historical populations

Census	Pop.	%±
<b>1930</b>	3,024	—
<b>1940</b>	3,066	1.4%
<b>1950</b>	4,991	62.8%
<b>1960</b>	5,593	12.1%
<b>1970</b>	9,882	76.7%
<b>1980</b>	19,381	96.1%
<b>1990</b>	24,544	26.6%
<b>2000</b>	30,726	25.2%
<b>2010</b>	43,323	41.0%

Population 1930 - 1990.<sup>[8]</sup>

## Local government

The Township of Egg Harbor is governed under the Township form of New Jersey municipal government by a five-member Township Committee. Members are elected in partisan elections to three-year terms in office on a staggered basis, with one or two seats coming up for election each year.<sup>[1]</sup> The Mayor and Deputy Mayor are chosen by the Township Committee from among its members during the Reorganization meeting each January. The members of Township Committee are part-time elected officials.

As of 2011, members of the Egg Harbor Township Committee are Mayor James J. McCullough, Deputy Mayor John W. Risley, Jr., Joe Cafero, John Carman, Jr. and Paul Hodson.<sup>[9]</sup>

## Federal, state and county representation

Egg Harbor Township is in the 2nd Congressional district. New Jersey's Second Congressional District is represented by Frank LoBiondo (R, Ventnor City). New Jersey is represented in the United States Senate by Frank Lautenberg (D, Cliffside Park) and Bob Menendez (D, Hoboken).

Egg Harbor Township is in the 2nd legislative district of the New Jersey Legislature, which is represented in the New Jersey Senate by Jim Whelan (D, Atlantic City), and in the Assembly by John F. Amodeo (R, Margate) and Vincent J. Polistina (R, **Egg Harbor Township**).<sup>[10]</sup>

Atlantic County's County Executive is Dennis Levinson (Linwood), whose term of office ends on December 31, 2011.<sup>[11]</sup> The Board of Chosen Freeholders, the county's legislature, consists of nine members elected to three-year terms on a staggered basis, with three seats coming up for election each year of which four members are elected at-large and one member from each of the five districts. As of 2011, Atlantic County's Freeholders are four at-large members Alisa Cooper (Linwood, term expires December 31, 2011)<sup>[12]</sup>, Vice Chairman Frank V. Giordano (Hamilton Township, 2012)<sup>[13]</sup>, Joseph J. McDevitt (Ventnor City, 2013)<sup>[14]</sup> and Jim Schroeder (Northfield, 2011)<sup>[15]</sup>; and five members elected from districts **District 1** (Atlantic City (part), **Egg Harbor Township (part)** and Pleasantville) Charles T. Garrett (Atlantic City, 2013)<sup>[16]</sup>, **District 2** - (Atlantic City (part), **Egg Harbor Township (part)**, Longport, Margate, Somers Point and Ventnor), Chairman Frank D. Formica (Atlantic City, 2012)<sup>[17]</sup>, **District 3** (**Egg Harbor Township (part)**, Hamilton Township (part), Linwood and Northfield) - Frank Sutton (Egg Harbor Township, 2011)<sup>[18]</sup>, **District 4** (Absecon, Brigantine, Galloway Township and Port Republic - Richard Dase (Galloway Township, 2013)<sup>[19]</sup> and **District 5** (Buena Borough Buena Vista Township, Corbin City, Egg Harbor City, Estell Manor, Folsom, Hamilton Township (part), Hammonton, Mullica Township and Weymouth) - Vacant.<sup>[20][21]</sup>

## History

The first residents of what would become Egg Harbor Township were the Lenni Lenape Indian tribe. Essentially, this area was their summer camp on the slightly higher elevations around the cedar swamp that is now Bargaintown Lake, as well as along the banks of Patcong Creek. Most of the southern New Jersey shoreline was used by the Lenape as a sort of resort during the summer months.<sup>[citation needed]</sup> The abundant fish, shellfish, wild berries, and bird's eggs in the area sustained them, and collecting shells for carving beads to be used as wampum was a profitable practice in their pre-European economy.<sup>[22]</sup>

Great Egg Harbor was originally part of Gloucester County. In 1694 a law was passed that read "forasmuch as there are families settled upon the Egg Harbor, and of right ought to be under some jurisdiction, be it enacted by the authority aforesaid that the inhabitants of the said Egg Harbor shall and do belong to the jurisdiction of Gloucester."

In 1710, by an Act of the Legislature, legal boundaries of Gloucester County were set from the Delaware River, along the Burlington County line to the sea and back up the Great Egg Harbor River to the Delaware River. At that time Great Egg Harbor encompassed all of present-day Atlantic County. In 1837, Atlantic County was set apart from Gloucester County and the Townships were: Egg Harbor, Weymouth, Hamilton and Galloway.

Since 1837, ten municipalities have separated from the original Egg Harbor Township, including Atlantic City (1854), Absecon (1872), South Atlantic City (now Margate) (1885), Somers Point (1886), Pleasantville (1888), Linwood (1889), Longport (1898), Brigantine (1903), Ventnor (1903) and Northfield (1905).

Egg Harbor Township, as it remains today, includes the communities of Bargaintown (the seat of government), English Creek, Scullville (formerly Jeffers), Steelmanville, McKee City, Cardiff, Farmington and West Atlantic City.

## Education

The Egg Harbor Township Schools serve public school students in grades K through 12. Schools in the district (with 2008-09 enrollment data from the National Center for Education Statistics<sup>[23]</sup>) are Davenport Complex with 819 students, Slaybaugh Complex with 925 students and H. Russell Swift School with 509 students for grades PreK-3, Dr. Joy D. Miller School with 1,112 students in grades 4-5, Alder Avenue Middle School with 888 students and Fernwood Avenue Middle School with 1,045 students for grades 6-8, along with Egg Harbor Township High School with 2,511 students in grades 9-12

## Commerce

The Shore Mall is a regional mall, opened in 1968, located on U.S. Route 40 / U.S. Route 322.

## Development and the Pine Barrens

Egg Harbor Township (along with Hamilton and Galloway Townships) has been designated a growth area by the New Jersey Pinelands Commission and is therefore currently experiencing heavy development. In exchange for the development in Egg Harbor Township, no trees are demolished for housing and other buildings in the Pine Barrens, also known as the Pinelands.

This "heavy development" consists of a state mandated construction of almost 30,000 additional housing units. The neighboring communities, Galloway Township and Hamilton Township have also been assigned similar construction numbers by the New Jersey Pinelands Commission.

Being a rural community, the infrastructure of Egg Harbor Township is not adequately able to handle the growth explosion. The local roads are very busy during the days and jammed at rush hour and more importantly, the schools are unable to handle the influx of school age children that are coming to the

area. Although almost every school on Egg Harbor Township has undergone additions and or renovations, they are over-crowded as soon as the doors open. Many of the classes are in excess of 30 students.

On January 22, 2007, the Egg Harbor Township Planning Board gave site approval for 660 new homes (and a new fire station) in the Farmington section of Egg Harbor Township.

The Village at Farmington (which appears to be a whole city unto itself) will be developed by Pulte Homes Corporation and will include 140 townhouses, 261 planned adult homes (55 and older) and 259 single family detached dwellings. In addition to the homes, the plan also calls for a community clubhouse, a second club house for 55 and older, recreation fields and walking paths. All of this will be built on a mere 273.6 acres (1.107 km<sup>2</sup>). Pulte Homes will also donate \$800,000 to the Egg Harbor Township recreation fund because the club houses and paths do not satisfy the township's recreation requirements for a development of this size.

Punte will also contribute \$350,000 for a second Farmington Fire Station and the landowners, Schoffer Enterprises will donate the land.

Once approvals are complete, Punte says that they will build 60 units of each type per year until the project is complete.

The Planning Board has requested that paperwork presented to the homeowners at purchase will "warn" residents that there is a nearby airport (Atlantic City International Airport, which in addition to functioning as a full service airport is home to the 177th wing of the Air National Guard and the Atlantic City base for the US Coast Guard), meaning they will be in the approach and takeoff patterns for incoming and outgoing aircraft, the Atlantic County Municipal Utility Authority (ACMUA), where all local municipalities bring their trash and recycle, which at given times of the year brings some pretty extensive landfill odors and a shooting range nearby.

Pulte Homes Corporation plans to offer single family homes in the mid \$300,000's and the adult homes for \$250,000.

## Notable residents

Notable current and former residents of Egg Harbor Township include:

- Steve Coates (born 1950), retired NHL Hockey Player & Philadelphia Flyers announcer.<sup>[24]</sup>
- Clique Girlz, a girl group.<sup>[25]</sup>
- Delino DeShields (born 1969), former MLB second baseman.<sup>[citation needed]</sup>
- Jeff Feagles (born 1966), punter who played for the New York Giants.<sup>[citation needed]</sup>
- Steve Keiner, winner of the 1999 Nathan's Hot Dog Eating Contest in Coney Island, downing 20¼ hot dogs in 12 minutes.<sup>[26]</sup>
- Ryan Lancaster (born 1985), professional basketball player.<sup>[27]</sup>
- Vincent Larusso (born 1978), actor.<sup>[citation needed]</sup>
- Walt Weiss (born 1963), MLB shortstop.<sup>[citation needed]</sup>
- Marc Zumoff, Philadelphia 76ers announcer.<sup>[citation needed]</sup>
- Pauly Shore, (born 1968), actor
- Chris Wheeler, born (1945), Philadelphia Phillies broadcaster since 1977