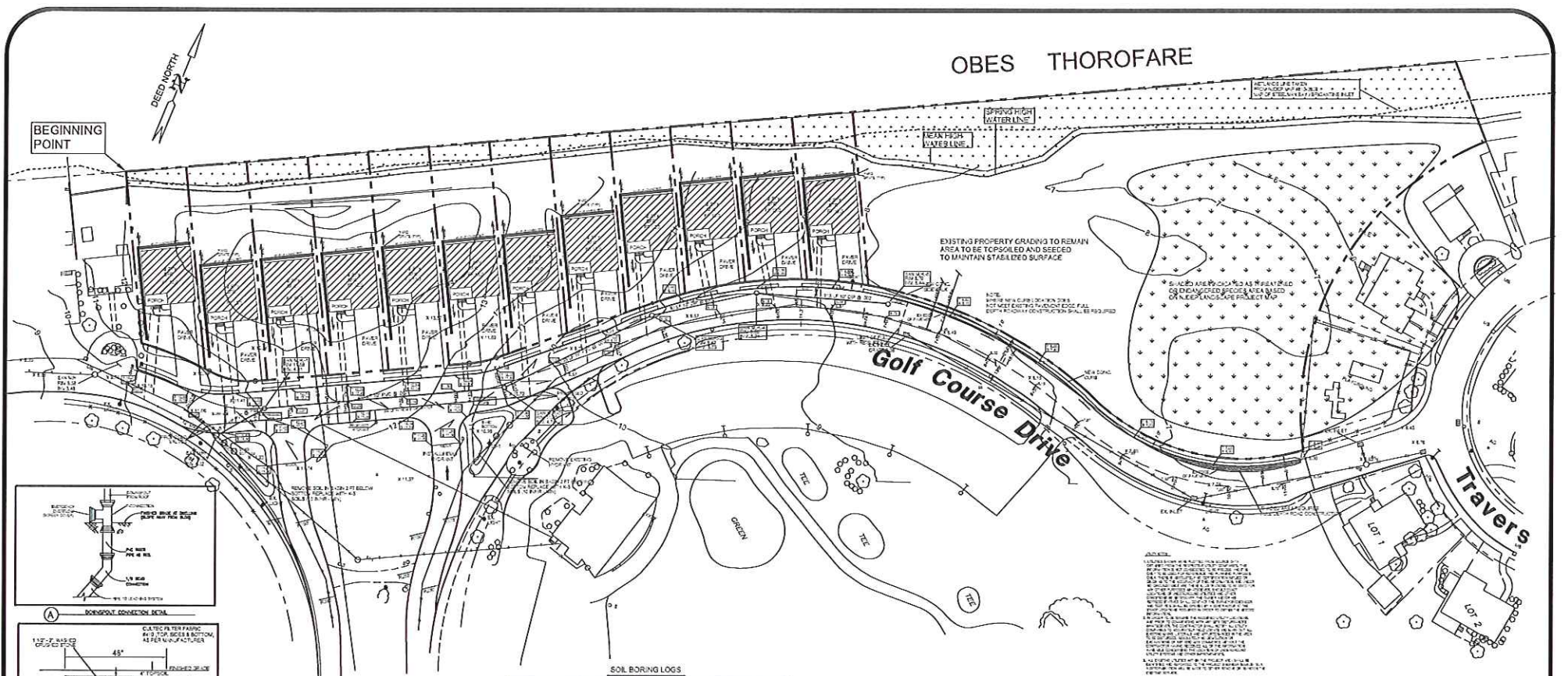


OBES THOROFARE

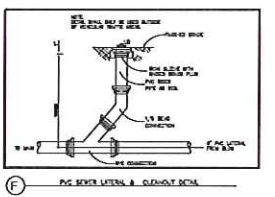
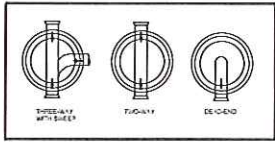
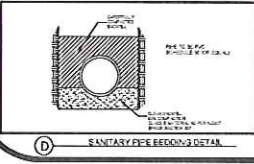
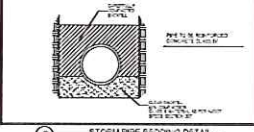
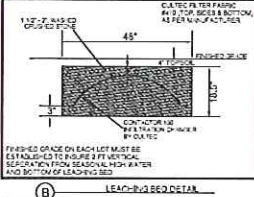
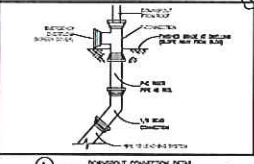


BEGINNING POINT



EXISTING PROPERTY GRADING TO REMAIN AREA TO BE TOPSOILED AND SEED TO MAINTAIN STABILIZED SURFACE

GRADED AREAS PROVIDED AS PRELIMINARY OR DETAILED GRADING SHOWN ON SEPARATE OR LATER LANDSCAPE PROJECT MAP



SOIL BORING LOGS

DATE	DEPTH	DESCRIPTION
08/20/07	0-10'	Topsoil
08/20/07	10-15'	Clay loam
08/20/07	15-20'	Clay loam
08/20/07	20-25'	Clay loam
08/20/07	25-30'	Clay loam
08/20/07	30-35'	Clay loam
08/20/07	35-40'	Clay loam
08/20/07	40-45'	Clay loam
08/20/07	45-50'	Clay loam
08/20/07	50-55'	Clay loam
08/20/07	55-60'	Clay loam
08/20/07	60-65'	Clay loam
08/20/07	65-70'	Clay loam
08/20/07	70-75'	Clay loam
08/20/07	75-80'	Clay loam
08/20/07	80-85'	Clay loam
08/20/07	85-90'	Clay loam
08/20/07	90-95'	Clay loam
08/20/07	95-100'	Clay loam

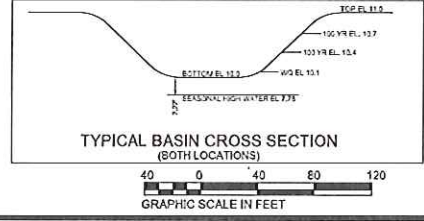
WATER DEMAND CALCULATIONS (RSIS TABLE 5.1 & 5.2)
(BASED ON 5 BEDROOM HOMES)

5 BEDROOM = 475 GPD PER HOME
TOTAL CONSUMPTION = 5700 GPD

PEAK HOUR RATE = 3.0 GPM PER HOUSE = 38 GPM TOTAL

MIN PIPE SIZE PER RSIS = 6"

- WATER SYSTEM**
1. WATER MAIN SHALL CONFORM TO NJAC SECTION 5:21-5.3 WITH RESPECT TO PIPE INSTALLATION.
 2. ALL MATERIALS TO BE UTILIZED FOR THE PROPOSED WATER SYSTEM SHALL BE SUBMITTED TO BRIGANTINE PUBLIC WORKS DEPARTMENT FOR REVIEW AND APPROVAL IN ORDER TO MAINTAIN MATERIAL CONSISTENCY. CLASS 52 CEMENT LINED DUCTILE IRON PIPE SHALL BE USED.
 3. PROPOSED HYDRANT TYPES SHALL BE COORDINATED WITH BRIGANTINE PUBLIC WORKS. SPECIFICALLY THREADED CONNECTION REQUIREMENTS
 4. WATER DEMAND CALCULATIONS WILL COMPLY WITH TABLE 5.1 AND 5.2 OF THE NJ RESIDENTIAL SITE IMPROVEMENT STANDARDS.



REV.#	DATE	COMMENT	BY
1	12/04/04	ISSUED FOR PERMITS	JJB
2	1/30/05	REVISED PER NCEP	JJB
3	4/22/05	REVISED PER NCEP	JJB
4	8/16/07	REVISED PER NCEP	JJB

REV. TO MEET CAPRA CONDITIONS JJB
REV. TO MEET APPROVAL CONDITIONS JJB
FINAL APPROVAL SUB JJB

AWP
ARTHUR W. PONZIO CO. & ASSOCIATES, INC.
SURVEYORS, PLANNERS, ENGINEERS
403 NORTH DOVER AVENUE, ATLANTIC CITY, N.J. 08401
PHONE: 609-344-8184 FAX: 609-344-1534

JON J. BARNHART
PROFESSIONAL PLANNER N.J. NO. GE43493

ARTHUR W. PONZIO, JR.
PROFESSIONAL PLANNER N.J. NO. 28314
PROFESSIONAL LAND SURVEYOR N.J. NO. 28314

SCALE: 1" = 40'
DATE: 9/26/04

BY: JJB
PROJ. NO.: 26514

C-4

GRADING, DRAINAGE & UTILITY PLAN
BLOCK 8102 LOT 1
BRIGANTINE ATLANTIC COUNTY NEW JERSEY

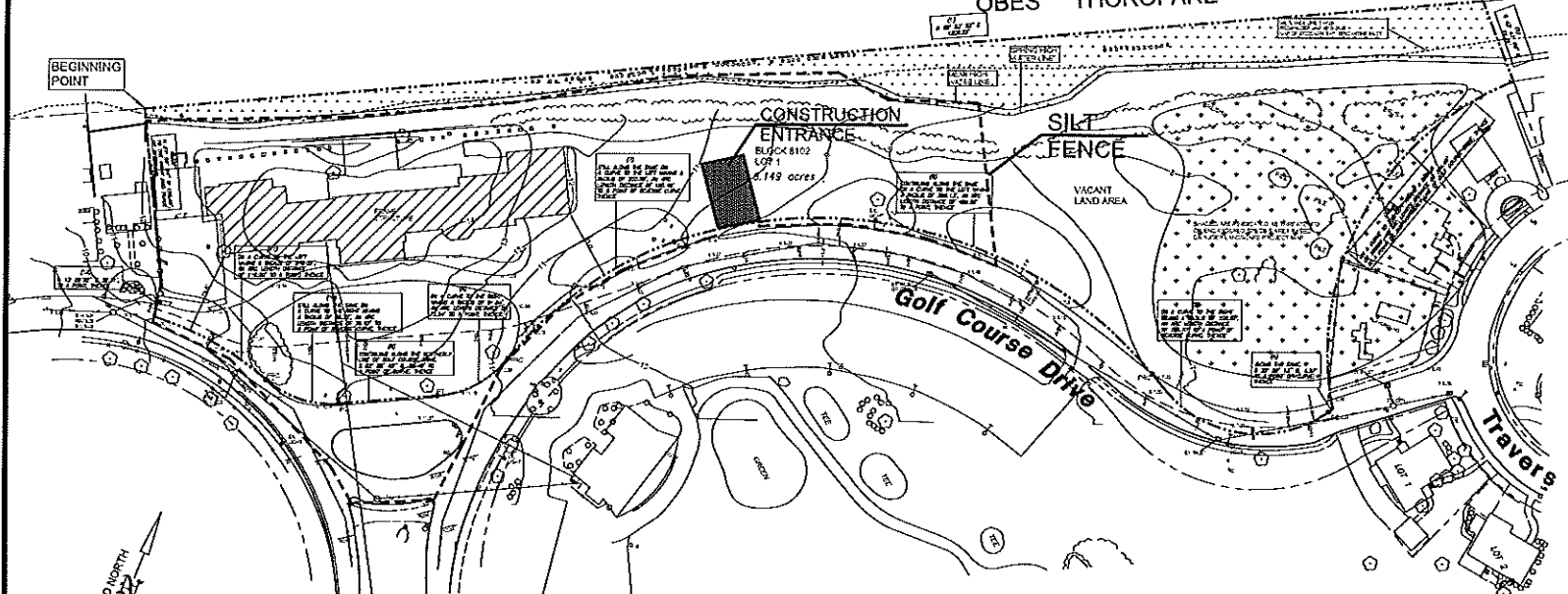
JON J. BARNHART
PROFESSIONAL PLANNER N.J. NO. GE43493

ARTHUR W. PONZIO, JR.
PROFESSIONAL PLANNER N.J. NO. 28314
PROFESSIONAL LAND SURVEYOR N.J. NO. 28314

SCALE: 1" = 40'
DATE: 9/26/04

BY: JJB
PROJ. NO.: 26514

OBES THOROFARE



BEGINNING POINT

CONSTRUCTION ENTRANCE
BLOCK 8102
LOT 1
0.149 acres

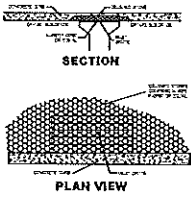
SILT FENCE

Golf Course Drive

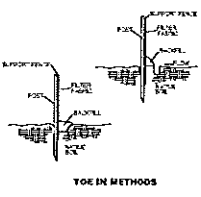
Travers

NOTE:
SILT FENCE IDENTIFIES PROPOSED
LIMIT OF DISTURBANCE / CONSTRUCTION

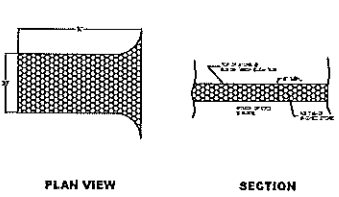
- SOIL EROSION AND SEDIMENT CONTROL PLAN
1. THE DISTRICT ENGINEER SHALL REVIEW THIS PLAN AND APPROVE IT PRIOR TO THE COMMENCEMENT OF CONSTRUCTION.
 2. THE DISTRICT ENGINEER SHALL REVIEW THIS PLAN AND APPROVE IT PRIOR TO THE COMMENCEMENT OF CONSTRUCTION.
 3. THE DISTRICT ENGINEER SHALL REVIEW THIS PLAN AND APPROVE IT PRIOR TO THE COMMENCEMENT OF CONSTRUCTION.
 4. THE DISTRICT ENGINEER SHALL REVIEW THIS PLAN AND APPROVE IT PRIOR TO THE COMMENCEMENT OF CONSTRUCTION.
 5. THE DISTRICT ENGINEER SHALL REVIEW THIS PLAN AND APPROVE IT PRIOR TO THE COMMENCEMENT OF CONSTRUCTION.
 6. THE DISTRICT ENGINEER SHALL REVIEW THIS PLAN AND APPROVE IT PRIOR TO THE COMMENCEMENT OF CONSTRUCTION.
 7. THE DISTRICT ENGINEER SHALL REVIEW THIS PLAN AND APPROVE IT PRIOR TO THE COMMENCEMENT OF CONSTRUCTION.
 8. THE DISTRICT ENGINEER SHALL REVIEW THIS PLAN AND APPROVE IT PRIOR TO THE COMMENCEMENT OF CONSTRUCTION.
 9. THE DISTRICT ENGINEER SHALL REVIEW THIS PLAN AND APPROVE IT PRIOR TO THE COMMENCEMENT OF CONSTRUCTION.
 10. THE DISTRICT ENGINEER SHALL REVIEW THIS PLAN AND APPROVE IT PRIOR TO THE COMMENCEMENT OF CONSTRUCTION.
 11. THE DISTRICT ENGINEER SHALL REVIEW THIS PLAN AND APPROVE IT PRIOR TO THE COMMENCEMENT OF CONSTRUCTION.
 12. THE DISTRICT ENGINEER SHALL REVIEW THIS PLAN AND APPROVE IT PRIOR TO THE COMMENCEMENT OF CONSTRUCTION.
 13. THE DISTRICT ENGINEER SHALL REVIEW THIS PLAN AND APPROVE IT PRIOR TO THE COMMENCEMENT OF CONSTRUCTION.
 14. THE DISTRICT ENGINEER SHALL REVIEW THIS PLAN AND APPROVE IT PRIOR TO THE COMMENCEMENT OF CONSTRUCTION.
 15. THE DISTRICT ENGINEER SHALL REVIEW THIS PLAN AND APPROVE IT PRIOR TO THE COMMENCEMENT OF CONSTRUCTION.
 16. THE DISTRICT ENGINEER SHALL REVIEW THIS PLAN AND APPROVE IT PRIOR TO THE COMMENCEMENT OF CONSTRUCTION.
 17. THE DISTRICT ENGINEER SHALL REVIEW THIS PLAN AND APPROVE IT PRIOR TO THE COMMENCEMENT OF CONSTRUCTION.
 18. THE DISTRICT ENGINEER SHALL REVIEW THIS PLAN AND APPROVE IT PRIOR TO THE COMMENCEMENT OF CONSTRUCTION.
 19. THE DISTRICT ENGINEER SHALL REVIEW THIS PLAN AND APPROVE IT PRIOR TO THE COMMENCEMENT OF CONSTRUCTION.
 20. THE DISTRICT ENGINEER SHALL REVIEW THIS PLAN AND APPROVE IT PRIOR TO THE COMMENCEMENT OF CONSTRUCTION.



INLET FILTER DETAIL

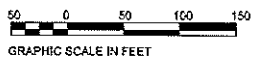


ENVIROFENCE DETAIL



STABILIZED CONSTRUCTION ENTRANCE DETAIL

- NOTES:
1. A REPORT OF COMPLIANCE MUST BE OBTAINED FROM THE DISTRICT PRIOR TO RECEIVING A CERTIFICATE OF OCCUPANCY FROM THE MUNICIPALITY. A REQUEST FOR A DISTRICT INSPECTION FOR THE RELEASE OF A REPORT OF COMPLIANCE MUST BE MADE 5 WORKING DAYS IN ADVANCE. THIS APPLIES TO BOTH COMPLETE (FINAL) AND CONDITIONAL (TEMPORARY) CERTIFICATES.
 2. ALL SEDIMENT SPILLED, DROPPED, WASHED OR TRACKED ONTO PUBLIC RIGHT-OF-WAYS MUST BE REMOVED IMMEDIATELY.
 3. THE PROPERTY OWNER SHALL BE RESPONSIBLE FOR ANY EROSION OR SEDIMENTATION THAT MAY OCCUR BELOW STORMWATER OUTFALLS OR OFFSITE AS A RESULT OF CONSTRUCTION OF THE PROJECT.



REV #	DATE	REASON	BY
1	12/06/24	REVISED PER COMMENTS	JLB
2	12/06/25	REVISED PER COMMENTS	JLB
3	12/06/25	REVISED PER COMMENTS	JLB
4	12/06/25	REVISED PER COMMENTS	JLB

SOIL EROSION & SEDIMENT CONTROL PLAN
BLOCK 8102 LOT 1
BRIGANTINE ATLANTIC COUNTY NEW JERSEY

ARTHUR W. PONZIO CO. & ASSOCIATES, INC.
SURVEYORS, PLANNERS, ENGINEERS
400 NORTH DOVER AVENUE, ATLANTIC CITY, N. J. 08401
PHONE: 609-344-8174 FAX: 609-344-1854

JON J. BARNHART
PROFESSIONAL PLANNER N.J. NO. GE43483

ARTHUR W. PONZIO, JR.
PROFESSIONAL LAND SURVEYOR N.J. NO. 28314

SCALE: 1" = 50'
DATE: 9/26/04

BY: JLB
PROJ. NO.: 26514

C-5