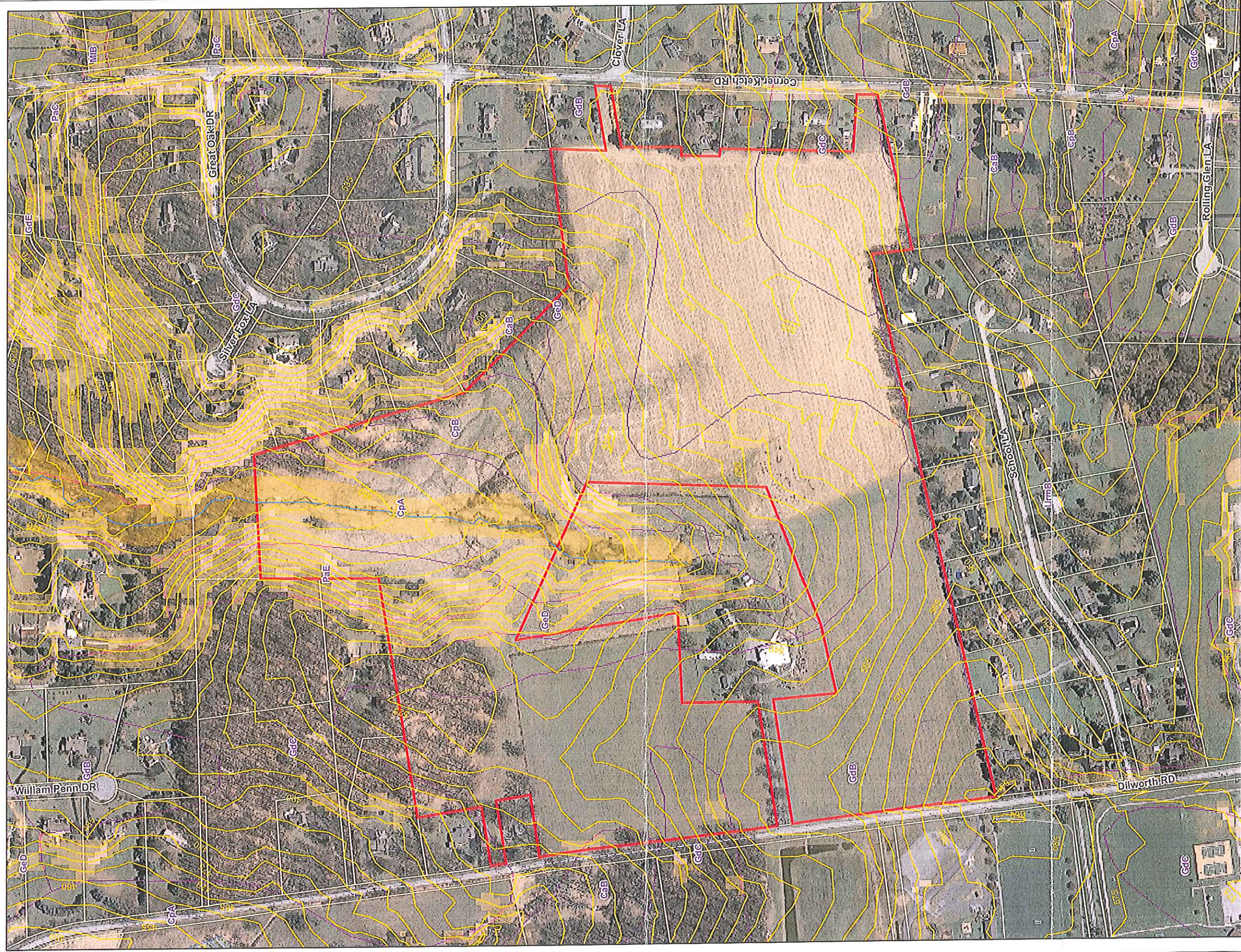




# Parcel 30-2-58.8



NOTES: Not for engineering purposes.

Address data source: Chester County CTC Department.  
Landbase Source: Planimetric features have been compiled to meet the National Map Accuracy Standard of 1:25,000 scale mapping using first order, fully analytical digital stereophotomaps, from aerial photography dated 1998. Elevation data was derived from a 10m resolution digital elevation model. Planimetric coordinates were based on the PA State Plane Coordinate System, South Zone and North American Datum 1983.

Copyright (c) 2005, County of Chester, PA. All Rights Reserved

**LIMITATION AND LIABILITY OF USE:** This map was digitally compiled for internal maintenance and developmental use by the County of Chester, PA to provide index to parcels and for other reference purposes. Parcel lines do not represent actual boundaries. The map is not intended for use in any engineering or construction project. The accuracy or content of any data contained herein, and makes no representation of any kind, including, but not limited to, the warranties of merchantability or fitness for a particular use, nor are any such warranties to be implied or inferred, with respect to the information or data furnished herein.

No part of this document may be reproduced, stored in a retrieval system or transmitted in any form or by any means, electronic, mechanical, photocopying, recording or otherwise, except as expressly permitted by the County of Chester, PA.

### Legend

- 5 Foot Contours
- Rivers and Streams
- Roads
- Parcel 30-2-58.8
- Parcel Boundaries
- Moderate - 15% to 25%
- Slope
- Steep - Over 25%
- Ponds and Lakes
- Wetlands
- 2006 FEMA Floodplains
- 100-Year Not Engineered
- 100-Year Engineered
- 500-Yr Floodplain
- Soils

