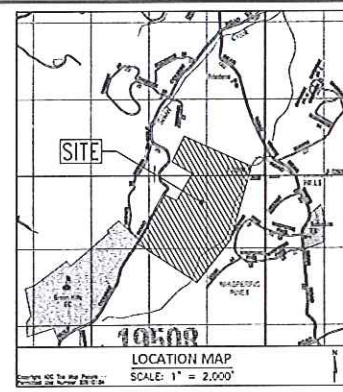
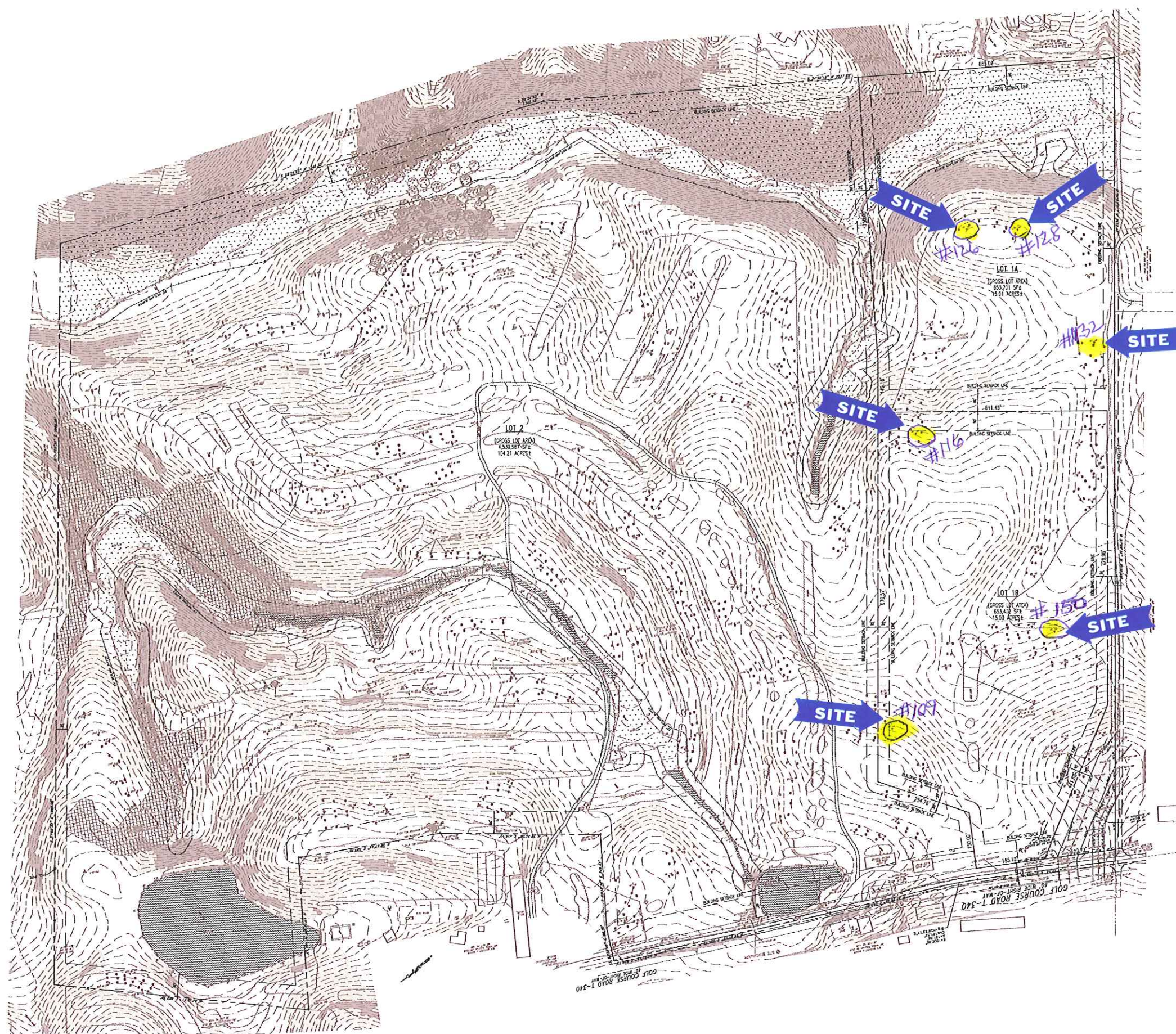


Lot #	Probe #	Soils Type	L.Z " Type	System Type	System Size	System Probes	System Slopes%	Perc Depth"	Perc Rate min/in	Pass/Fail	Comments
	138		41"M/W								
	139		32"M	ESM	15 X 60	138 / 139	0.1 - 1.1	20	6.88	PASS	*2 HOLE PERC SYSTEMS TOO CLOSE
	140		22"M	ESM	15 X 60	139 / 140	2.3 - 5.9	20	8.55	PASS	
	141		30"M	SSESM	10 X 75	141 / 142	8.38 - 12.9	20	52.95	PASS	
	142		40"R								
	143		24"M	ESM	15 X 60	142 / 143	6.27 - 8.67	20	10.3	PASS	
	144		28"M	ESM	15 X 60	144 / 145	4.13 - 9.13	20	11.03	PASS	
	145		50"M								
	146		46"M								
	147		30"M	ESM	15 X 60	147/149	2.1 - 12	20	24.98	PASS	
	148		30"M	ESM	15 X 60	146 / 148	6 - 6.27	20	10.3	PASS	
				ESM	15 X 60	148/149/151	5.93 - 8.07	20	13.38	PASS	
	149		51"M								
IB	150		52"M	AGB	15 X 60	150 / 151	7.9 - 8.7	20	64.67	PASS	
	151		84"DOP								
	152		22"M	SSESM	10 X 75	151 / 152	10.75 - 14.2	20	126.67	FAIL	PERC RATE
	153		84"+								
	154		36"M	DRIP		153 / 154					NEED SOIL SCIENTIST
				DRIP		154 / 156					NEED SOIL SCIENTIST
	155		13"M								FAILED PROBE
	156		84"+								
	157		84"+								
	158		32"R	ESM	10 X 50	157 / 158	5 - 5.5	20	11.9	PASS	
	159		26"R	ESM	10 X 60	158 / 159	6.2 - 10.6	18	124.08	PASS	
	160		20"M								
	161		12"M								FAILED PROBE
	162		22"M								
	163		34"M								
	164		84"+								
	165		84"+								
	166		84"+								
	167		30"R								
	168		20"R	ESM	15 X 60	167 / 168	10.9 - 12	12	7.85	PASS	
				ESM	15 X 60	168 / 169	7.6 - 12	12	7.5	PASS	
	169		33"R								
	170		20"R	ESM	15 X 60	170 / 171	5.73 - 7.4	12	9.15	PASS	
	171		84"+	IGB	30 X 60	171 / 172	0.76 - 2.43	36	12.08	PASS	
	172		84"+								
	173		84"+								
	174		34"R	ESM	15 X 60	173 / 174	5.67 - 6.67	20	45.58	PASS	
	175		31"SPL	ESM	15 X 60	174 / 175	6.4 - 10.8	20	45.12	PASS	



DLHowell & Assoc., Inc.
 1253 Wrights Lane
 West Chester, PA 19380
 Phone: (610) 618-6002
 Fax: (610) 618-9003

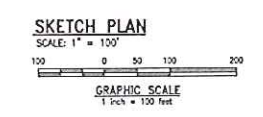
PERC TESTS

Lot 1A

- # 126
- # 128
- # 132

Lot 1B

- # 109
- # 116
- # 150



SKETCH
 3 LOT SUBDIVISION PLAN

CLIENT: LESLIE KEARNS
 PHASED THE KEARNS PROPERTY
 LOCATED GOLF COURSE ROAD
 ROBESON TOWNSHIP, BEWES COUNTY, PA.

DATE	12/04/2012
SCALE	1" = 100'
DRAWN BY	ECK
CHECKED BY	DLH
PROJECT NO.	2498
SHEET NO.	2498 SK-9
DATE	12/04/2012
DRAWING NO.	SK-9
SHEET	1 of 1