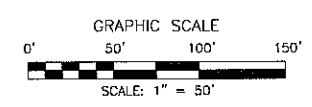
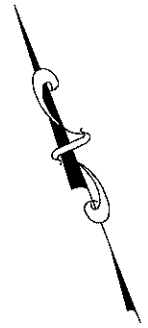
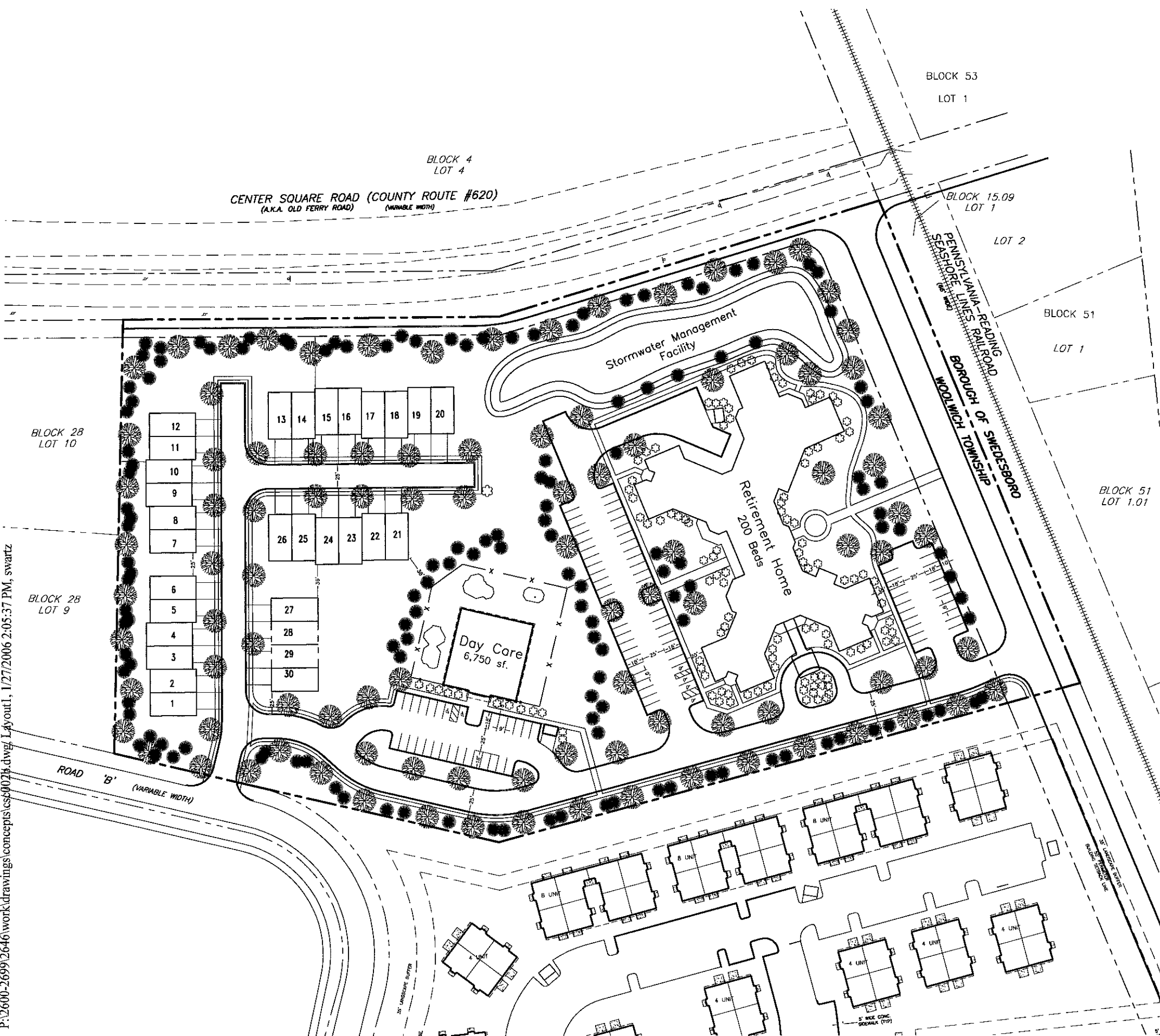


P:\2600-2699\2646\work\drawings\concepts\cs600716.dwg, Layout1, 1/27/2006 2:05:37 PM, swartz



NO.	DATE	REVISIONS

SITE CONCEPT

PLATE 7, BLOCK 28, LOTS 11.01 & 12
 WOOLWICH TOWNSHIP, GLOUCESTER COUNTY, NEW JERSEY

PREPARED BY
CONSULTING ENGINEERS SERVICES
 PROFESSIONAL ENGINEERS, PLANNERS, & LAND SURVEYORS
 150 DELEA DRIVE, SUITE 11, SEWELL, NJ 08080
 PHONE (609) 228-2200 FAX (609) 232-2246
 N.J. CERTIFICATE OF AUTHORIZATION NO. 0427922

DATE: 01/27/06
 SHEET NO.: 0427922
 FILE NO.: 0427922

