



[Log In](#) | [Sign Up](#)

[How it Works](#) [Search](#) [Map](#) [FAQ](#) [Builders](#) [Join Our Team](#) [Contact Us](#)

Windsor at Glen Mills - Active adult by Vintage Development Company

Live like royalty at Windsor at Glen Mills, conveniently located in Concord Township, Delaware County. This premier adult condominium community combines elegant homes with a sensational clubhouse - all under one roof.

The homes are designed with the perfect blend of luxury and comfort. Spacious living areas and fine details capture the spirit of regal living. And the sensational clubhouse and pool are right at your doorstep, completing a concept in adult living that is truly grand.

The 2 level Clubhouse will feature: meeting and banquet facilities, a library, game room, computer room, activity area, and fitness center, plus more to come. There are 7 units to choose from, and all have a storage area in the lower level (indoor garage). Optional indoor parking is available at approx, \$16,000 per space. All units have balconies.

Get a rebate up to \$2,049
[How does it work?](#)

Schedule a Visit



Address	244 Baltimore Pike Glen Mills, PA 19342 Delaware County	Style	Condominium/Active Adult
School	N/A	Price	Starting at \$245,900
Builder	Vintage Development Company	Size	1,360 - 1,677 sq ft
Features	Garage(s), First Floor Bed	Rooms	1 - 2 Beds / 1 - 2 Baths

Hours: Sales office open 12 - 5pm daily

If you have questions, including the latest pricing and availability information at Windsor at Glen Mills - Active adult, contact Ryvenco.com at (866) 736-1222 or [email us](#).

Directions to Windsor at Glen Mills - Active adult

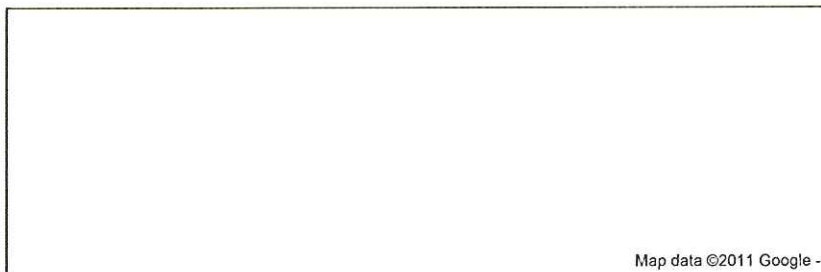
Be sure to schedule an appointment with Ryvenco.com before visiting Windsor at Glen Mills - Active adult to take advantage of the cash bonus program.

From Routes 1 and 202:

Rt. 1 N approx. 3.5 miles to a Right into New Seasons entrance. Sales Trailer for Windsor is located behind New Seasons building.

From Routes 1 and 252 (Media):

South on Baltimore Pike (approx. 4 miles), turn Left into the New Seasons entrance. Sales Trailer for Windsor is located behind New Seasons building.



Map data ©2011 Google -



Area Map



Home



Home



Home



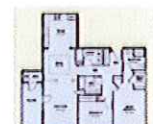
Clubhouse



Clubhouse



Clubhouse



The Carisle Floor Plan



The Buckingham Floor Plan



The Amberly Floor Plan

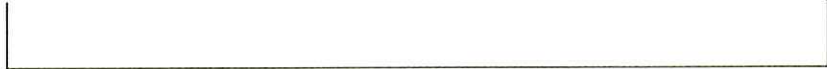


Community Map



Home

Click each photo to enlarge.



Communities Near Windsor at Glen Mills - Active adult

The following new homes are near **Windsor at Glen Mills - Active adult**:



Estates at Garnet Valley

Builder: Toll Brothers
Glen Mills, PA
Single Family

\$579,995 - \$778,995
3,100 - 4,850 sq ft

Get a Rebate
*
up to \$7,789



Estates at Mill Creek

Builder: David Cutler Group
Thornton, PA ~ 1.94 miles
Single Family

\$733,950 - \$842,950
3,240 - 4,061 sq ft

Get a Rebate
*
up to \$8,429



Concord Valley

Builder: Jacobucci Homes (A Baker company)
Marcus Hook, PA ~ 5.07 miles
Townhouse

\$198,900 - \$231,900
1,540 - 2,060 sq ft



Foxfield Condominium

Builder: The McKee Group
Marcus Hook, PA ~ 5.07 miles
Condominium/Active Adult

\$199,900 - \$252,990
1,114 - 1,800 sq ft

Get a Rebate
*
up to \$2,529



Northbrook Carriage Homes

Builder: Blenheim Homes, L.P
Marcus Hook, PA ~ 5.07 miles
Carriage House

\$360,900 - \$411,400
2,048 - 2,145 sq ft

Get a Rebate
*
up to \$4,114



Woodlands at Ridley Creek

Builder: Toll Brothers
Media, PA ~ 5.08 miles
Single Family

\$632,995 - \$689,995
3,100 - 4,300 sq ft

Get a Rebate
*
up to \$6,899



Water Mill

Builder: Moser Builders, Inc.
Media, PA ~ 5.08 miles
Single Family

\$1,369,000 - \$1,521,000
4,703 - 5,512 sq ft

Get a Rebate
*
up to \$15,210



Red Bridge Farm

Builder: Rouse Chamberlin Homes
West Chester, PA ~ 6.02 miles
Single Family

\$569,900 - \$599,900
1,874 - 2,852 sq ft

Get a Rebate
*
up to \$5,999



The Preserve at Chadds Ford

Builder: Toll Brothers
West Chester, PA ~ 6.02 miles
Single Family

\$554,995 - \$649,995
2,960 - 4,300 sq ft

Get a Rebate
*
up to \$6,499



Preserve at Squire Cheyney

Builder: Orleans Homebuilders, Inc.
West Chester, PA ~ 6.02 miles
Single Family

\$619,990 - \$702,990
3,288 - 4,917 sq ft

Get a Rebate
*
up to \$7,029



Traditions at Ridley Creek - Active Adult

Builder: Pulte Homes
Brookhaven, PA ~ 6.43 miles
Condominium/Active Adult

Starting at \$174,500
Starting at 1,178 sq ft

Get a Rebate
*
up to \$1,745



Kinterra

Builder: NV Homes
Chadds Ford, PA ~ 6.45 miles
Single Family

\$529,990 - \$739,990
3,111 - 5,618 sq ft

Get a Rebate
*
up to \$7,399



Stone Brook

Builder: Newlin Homes
Chadds Ford, PA ~ 6.45 miles
Single Family

\$969,000 - \$1,199,000
4,100 - 5,200 sq ft

Get a Rebate
*
up to \$11,990

Estates at Chadds Ford Is

Builder: Toll Brothers
Chadds Ford, PA ~ 6.45 miles

\$709,995 - \$841,995
3,767 - 4,920 sq ft

Get a Rebate
*



Single Family

up to \$8,419



The Estates at Chadds Ford

Builder: Toll Brothers

Chadds Ford, PA ~ 6.45 miles

Single Family

\$689,995 - \$771,995

3,588 - 4,240 sq ft

Get a Rebate

*

up to \$7,719

Ryvenco.com is an independent agency. We are not an agent of, employed by or represent any of the builders displayed on this site. Ryvenco.com makes every effort to maintain accurate information, community availability, prices, models and other features are subject to change without notice and cannot be guaranteed. Pictures displayed are typical models for this builder and may not necessarily be featured at this community.

[Search New Homes](#) [New Home Builders](#) [New Jersey](#) [Pennsylvania](#) [Maryland](#) [Delaware](#)

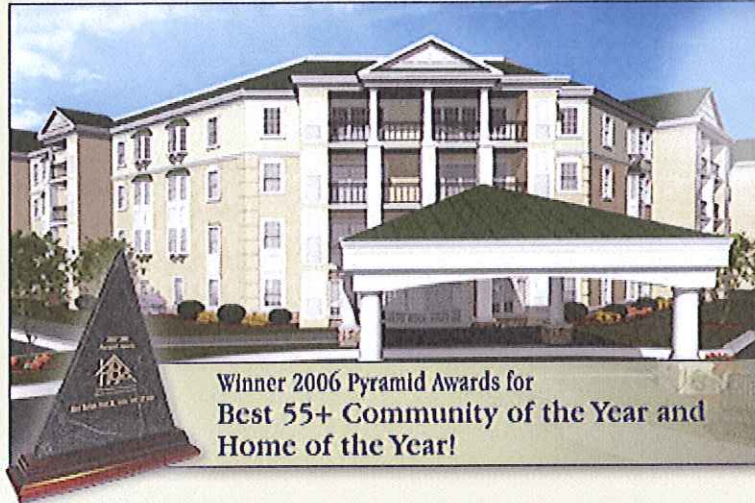
[Privacy](#) [Terms & Conditions](#) [Consumer Notices](#) [NJ Rebate Disclosure](#) [NJ Buyer Rebate Agreement](#) [Contact Us](#)

© 2011 Ryvenco.com All Rights Reserved. Licensed Real Estate Broker

VINTAGE DEVELOPMENT COMPANY

[ABOUT THE BUILDER](#) [OUR COMMUNITIES](#) [CONTACT US](#) [HOME](#)

*Finely Grafted
New Homes
that Reflect the
Lifestyles of
Their Owners*



Winner 2006 Pyramid Awards for
Best 55+ Community of the Year and
Home of the Year!

WINDSOR
*at
Glen Mills*

**Condominium
From the**

244 Baltimore
Glen Mills, Pennsylvania
(610)459-
Contact
windsorglenmills@
for more information

[CLUBHOUSE](#) [FLOORPLANS](#) [AMENITIES](#) [SITE MAP](#) [AREA MAP](#)
[DIRECTIONS](#) [GALLERY](#) [VIRTUAL TOUR](#) [TESTIMONIALS](#)

About Windsor at Glen Mills

Live like royalty at Windsor at Glen Mills, conveniently located in Concord Township, Delaware County. This premier adult condominium community combines elegant homes with a sensational clubhouse – all on one roof.

The homes are designed with the perfect blend of luxury and comfort. Spacious living areas and fireplaces capture the spirit of regal living. And – the sensational clubhouse and pool are right at your doorstep, completing a concept in adult living that is truly grand.

©2003, Vintage Development Company

VINTAGE DEVELOPMENT COMPANY

ABOUT THE BUILDER OUR COMMUNITIES CONTACT US HOME



About the Builder



Vince D'Annunzio grew up immersed in his family's construction business. Working at his father's construction company, Vince had the opportunity to learn the details of quality building techniques from the finest of craftsmen. Vince remains captivated by construction and is constantly searching for better ways to build, better designs, and better life-enhancing features for his new homes. This focus has become the trademark of Vintage Development Company as Vince continues his family's legacy of fine construction.

In 1980 Vince D'Annunzio founded Vintage Development Company. His company is now known for the construction of elegant custom homes and semi-custom residential communities. Vince was honored by the Home Builder's Association of Chester and Delaware Counties when Arborlea received the 2003 Pyramid Award for Best Single Family community from \$450,000 to \$550,000. Windsor at Glen Mills, an active adult condominium in Concord Township, Delaware County, is Vince's newest community.

Vince D'Annunzio works in partnership with his architectural firm to create new designs that reflect the lifestyles of his buyers and which blend the most recent trends and innovations in new home construction. Homes are designed to complement the natural setting of the residence, taking into account the surroundings and neighborhood.

Vince welcomes individuality among his buyers and offers customization and flexibility in the construction of each home to reflect personal tastes. Vince strives to create a pleasant and stress-free experience throughout the buying and building process for each buyer of a Vintage Development home. The ultimate goal of Vintage Development Company is providing buyers with a finely crafted new home that will create a lifetime of pride of ownership, satisfaction and comfort. Vince D'Annunzio proudly continues his family's building heritage.

Past Co

- Ced
UK
- Chest
F
- Clas
OHAR
- Courts
PENNSBURY
- Dalke
KENNET
- Dav
WILL
- Fox
BE
- Ha
EAST
- Jaff
WILL
- New S
WEST
- Oa
EAST
- Per
MA
- Silv
BIRK
- Sugart
EAST
- Sycan
WF
- Tal
EAST
- The Moors
EAST
- Thomp
WILL
- Ar
CO
- Bro
MIDC
- S. Rot
RF
- Windsor
CO

VINTAGE DEVELOPMENT COMPANY

ABOUT THE BUILDER OUR COMMUNITIES CONTACT US

*Finely Crafted
New Homes
that Reflect the
Lifestyles of
Their Owners*



Vintage Development is a premier new home builder in Chester County and Delaware County. From single-family to adult 55+ homes, Vintage brings luxury living to homeowners across the Delaware Valley. For over 20 years, Vintage has delighted homeowners with sensational designs, amenities beyond their expectations and locations that ensure convenience that makes every lifestyle complete.



©2003, Vintage Development Company

VINTAGE DEVELOPMENT COMPANY

ABOUT THE BUILDER OUR COMMUNITIES CONTACT US HOME



244 Baltimore Pike
Glen Mills, PA 19342
(610) 459-5020

About Windsor

Clubhouse

Floorplans

Amenities

Site Map

Area Map

Directions

Gallery

Virtual Tour

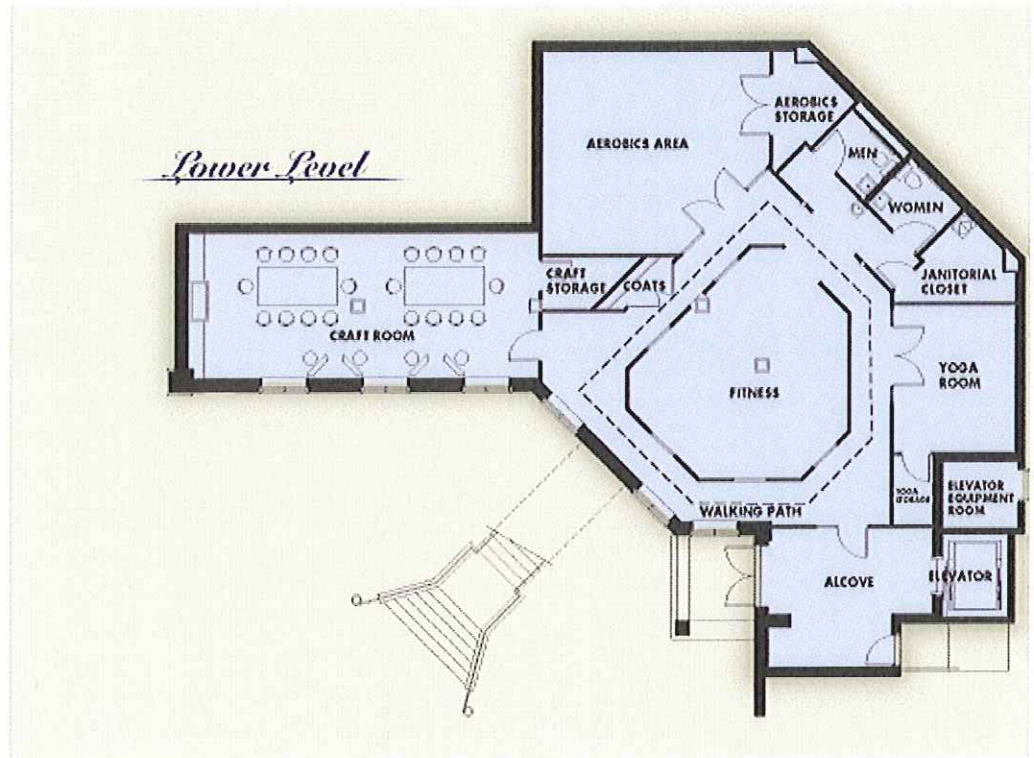
Testimonials

Windsor Clubhouse



Upper Level





©2003, Vintage Development Company

VINTAGE DEVELOPMENT COMPANY

ABOUT THE BUILDER OUR COMMUNITIES CONTACT US HOME



244 Baltimore Pike
Glen Mills, PA 19342
(610) 459-5020

About Windsor

Clubhouse

Floorplans

Amenities

Site Map

Area Map

Directions

Gallery

Virtual Tour

Testimonials

Windsor Features & Amenities

Design and Luxury Appointments

- Oak hardwood in foyer
- Plush wall to wall carpeting
- Exclusive trim package includes oversized baseboard and casings on all windows and doorways
- Bay window in Master Bedroom (by model)
- Volume ceiling
- Triple door entry to private balcony
- Coffered ceiling (by model)
- Raised panel insulated entry door
- Brass lever style hardware
- Lighting package
- Fan boxes in bedrooms (by model)

Kitchen Features

- 36" Raised panel kitchen cabinets with crown molding
- Eat-in Kitchen and Formal Dining area (most models)
- Laminate counters in choice of colors
- Stainless steel sink with sprayer
- Icemaker connection
- Appliance package including spacesaver microwave, self-cleaning range and dishwasher
- Waste disposal
- Pantry (by model)
- Breakfast bar (by model)

Bath Appointments

- Single lever faucets
- Ceramic tile bathroom floors
- Cultured marble vanity counters
- Fiberglass shower in Master Bath
- Glass shower enclosure
- Grab bars in tub and shower
- Fiberglass tub/shower in secondary bath
- Medicine cabinet master bath
- Raised panel vanity cabinet
- Exhaust fan in each bath

Comfort and Convenience

- Laundry room (by model)
- Pre-wire phone (3) and cable connections
- Cat 5 wiring
- High efficiency 50 gallon hot water tank
- High efficiency gas heat and central air conditioning
- Fire protection sprinkler system
- Elevator service
- Concrete plank construction for floors
- Security system in each residence

Exterior Finishes and Features

- Cultured stone and stucco façade
- Private balcony
- Insulated windows with integral blinds
- Insulated glass triple slider (by model)
- Secured entry

Community Amenities

- Clubhouse area with fitness center, meeting room, television room, and activity areas—all fully equipped
- Concrete sidewalk and walkway
- Gracious garden area with outdoor seating
- Outdoor pool
- Indoor parking available
- Private storage area for each home
- Public water and sewer
- Community Association provides maintenance of your home and grounds

*Seller reserves the right to modify or change features without notice.
Revised 1/8/2008*

©2003, Vintage Development Company

VINTAGE DEVELOPMENT COMPANY

[ABOUT THE BUILDER](#) [OUR COMMUNITIES](#) [CONTACT US](#) [HOME](#)



244 Baltimore Pike
Glen Mills, PA 19342
(610) 459-5020

[About Windsor](#)

[Clubhouse](#)

[Floorplans](#)

[Amenities](#)

[Site Map](#)

[Area Map](#)

[Directions](#)

[Gallery](#)

[Virtual Tour](#)

[Testimonials](#)

[Windsor Site Map](#)



©2003, Vintage Development
Company

VINTAGE DEVELOPMENT COMPANY

ABOUT THE BUILDER OUR COMMUNITIES CONTACT US HOME



244 Baltimore Pike
Glen Mills, PA 19342
(610) 459-5020

About Windsor

Clubhouse

Floorplans

Amenities

Site Map

Area Map

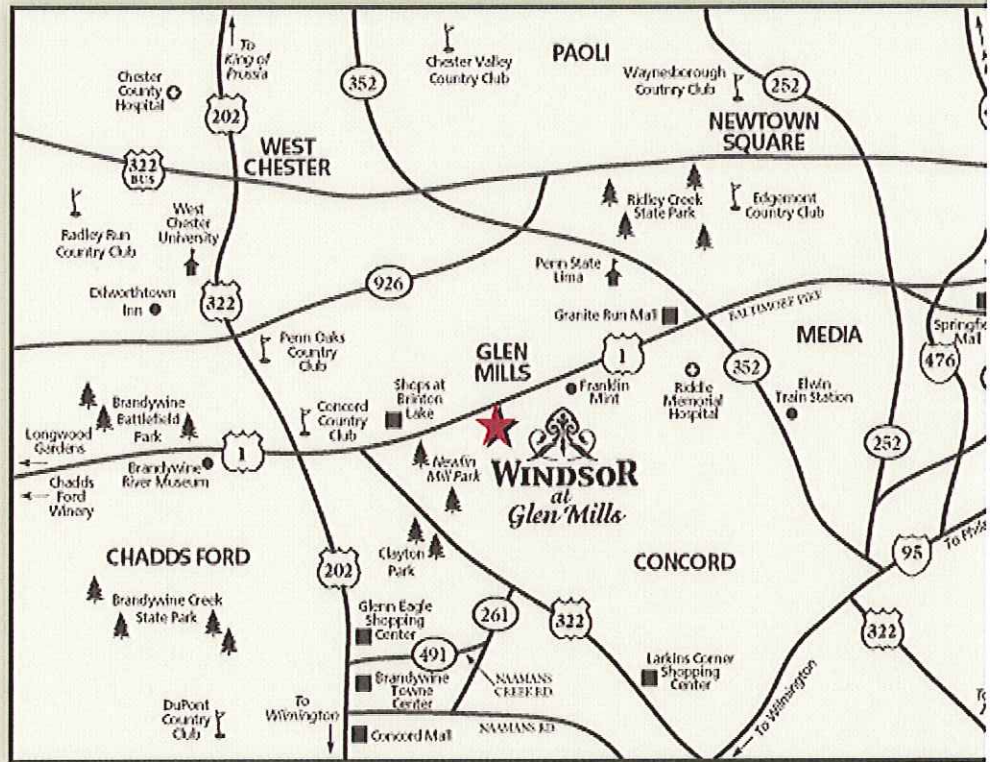
Directions

Gallery

Virtual Tour

Testimonials

Windsor Area Map



©2003, Vintage Development Company

VINTAGE DEVELOPMENT COMPANY

[ABOUT THE BUILDER](#) [OUR COMMUNITIES](#) [CONTACT US](#) [HOME](#)



244 Baltimore Pike
Glen Mills, PA 19342
(610) 459-5020

About Windsor

[Clubhouse](#)

[Floorplans](#)

[Amenities](#)

[Site Map](#)

[Area Map](#)

[Directions](#)

[Gallery](#)

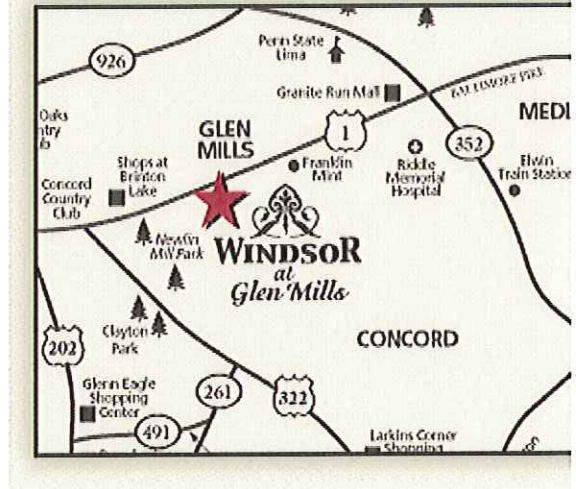
[Virtual Tour](#)

[Testimonials](#)

Windsor Directions

From Routes 1 and 202:
Rt. 1 N approx. 3.5 miles to a Right into New Seasons entrance. Decorated Model is located behind New Seasons building.

From Routes 1 and 252 (Media):
South on Baltimore Pike (approx. 6 miles), turn Left into the New Seasons entrance. Decorated Model is located behind New Seasons building.



©2003, Vintage Development Company



VINTAGE DEVELOPMENT COMPANY

[ABOUT THE BUILDER](#) [OUR COMMUNITIES](#) [CONTACT US](#) [HOME](#)



244 Baltimore Pike
Glen Mills, PA 19342
(610) 459-5020

[About Windsor](#)

[Clubhouse](#)

[Floorplans](#)

[Amenities](#)

[Site Map](#)

[Area Map](#)

[Directions](#)

[Gallery](#)

[Virtual Tour](#)

[Testimonials](#)

[Hellen Terstappen](#)

"I looked at many places, but I always came back to Windsor. I like active 55+ community much better than an extended care or assisted living wanted to keep my independence. I felt that Windsor's price was very fair, compared to other condominiums I looked at. I'm very happy here - I tell Windsor has the whole package." [read more](#)

[Ken Foley](#)

"We began looking at this building, as soon as we saw the specs. construction was really important to me. A lot of buyers might not have known that, but they sure do appreciate it now. We're close to Route 1, and the pre construction keeps it extremely quiet, whereas stick built just wouldn't do." [read more](#)

[Bob & Peg Levesque](#)

"We had no trouble fitting everything we wanted. Our master bedroom and we love the sunlight that comes in through our huge bay windows. I knew it first, but the transition for us has been no problem at all. From the day we moved in, I thought, 'Why didn't we do this before?'" [read more](#)

©2003, Vintage Development
Company